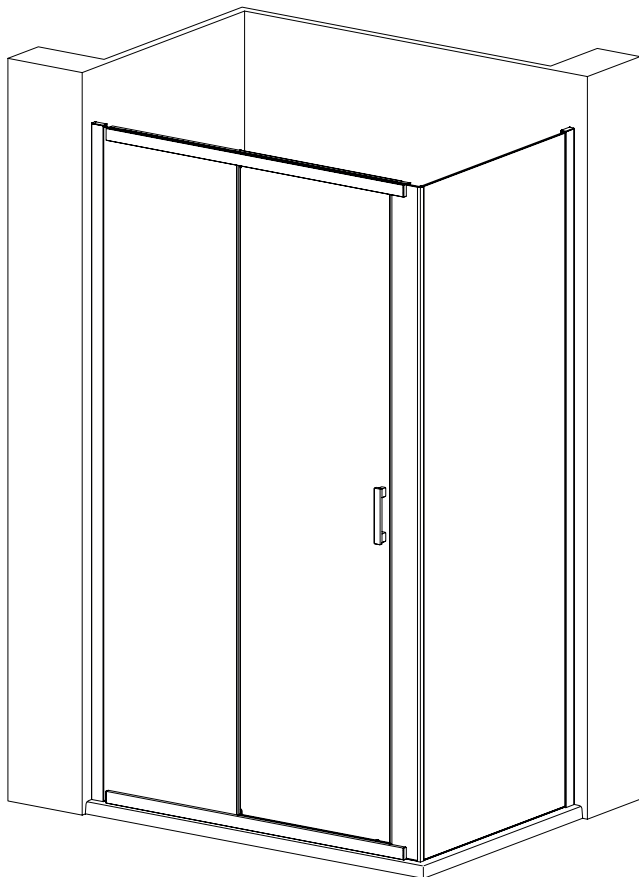


Please read these instructions throughout before installing as incorrect fitting will invalidate the guarantee.  
If you are unsure about these instructions please contact Barwick Bathroom Distribution LLP 01274 687555.

**HEALTH & SAFETY WARNING**

**DUE TO THE WEIGHT & SIZE OF THE GLASS PANEL(S) A MINIMUM OF TWO PERSONS ARE REQUIRED TO MOVE AND INSTALL THIS ENCLOSURE**



**Tools Required**



**Cleaning - General**

For the wall post and fixings use only warm soapy water and damp cloth/ sponge on a regular basis. After cleaning please rinse with clean water to remove any residue.

Do not use abrasive scouring powders, chemicals or aerosol cleaners - these may result in damage to the surfaces, in particular, the plated component parts.

**Glass Treatment**

The glass panels are pre-treated with a protective coating on the inside surfaces only. Whilst this makes cleaning the glass easier and helps prevent the build up of harmful lime-scale and soap deposits, the glass still needs to be maintained on a regular basis. We recommend the use of a detergent and aroma free glass cleaner (A 50/50 mix of white vinegar and water works well)

DO NOT use strong detergents, abrasive cleaners or abrasive scrubbing equipment for cleaning, these can damage the coating.

DO use a squeegee to remove remaining droplets of water from glass after showering, any build up of residue can be removed easily using an appropriate cleaner and agitation from soft cleaning equipment

**Important**

Check appearance of all product - any defects must be reported to your retailer before assembly/installation. Claims for imperfections will only be accepted prior to assembly/installation.

Any claims made under the terms of the Lifetime Guarantee must be reported to your retailer within 21 days of the fault occurring

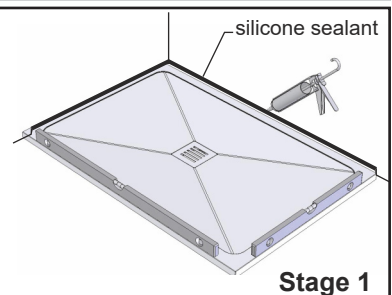
Check the enclosure adjustment sizes are suitable for your installation.

Use care when drilling into the walls to avoid hidden pipes or electric cables.

**Shower Tray**

Ensure the top of shower tray is LEVEL in ALL directions.

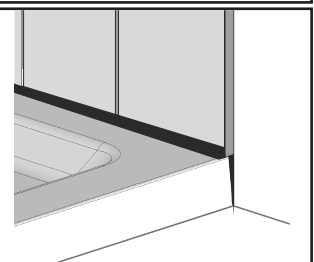
Once the tray is installed but before the wall tiles are fitted, any gap between the tray and the walls must be filled with silicone sealant flush with the top of the tray.



**Stage 1**

Once the walls have been tiled but before the enclosure is installed, the tiles must be silicone sealed to the tray all of the way around in one continuous bead.

**Failure to follow these instructions will result in leakage problems.**



**Stage 2**

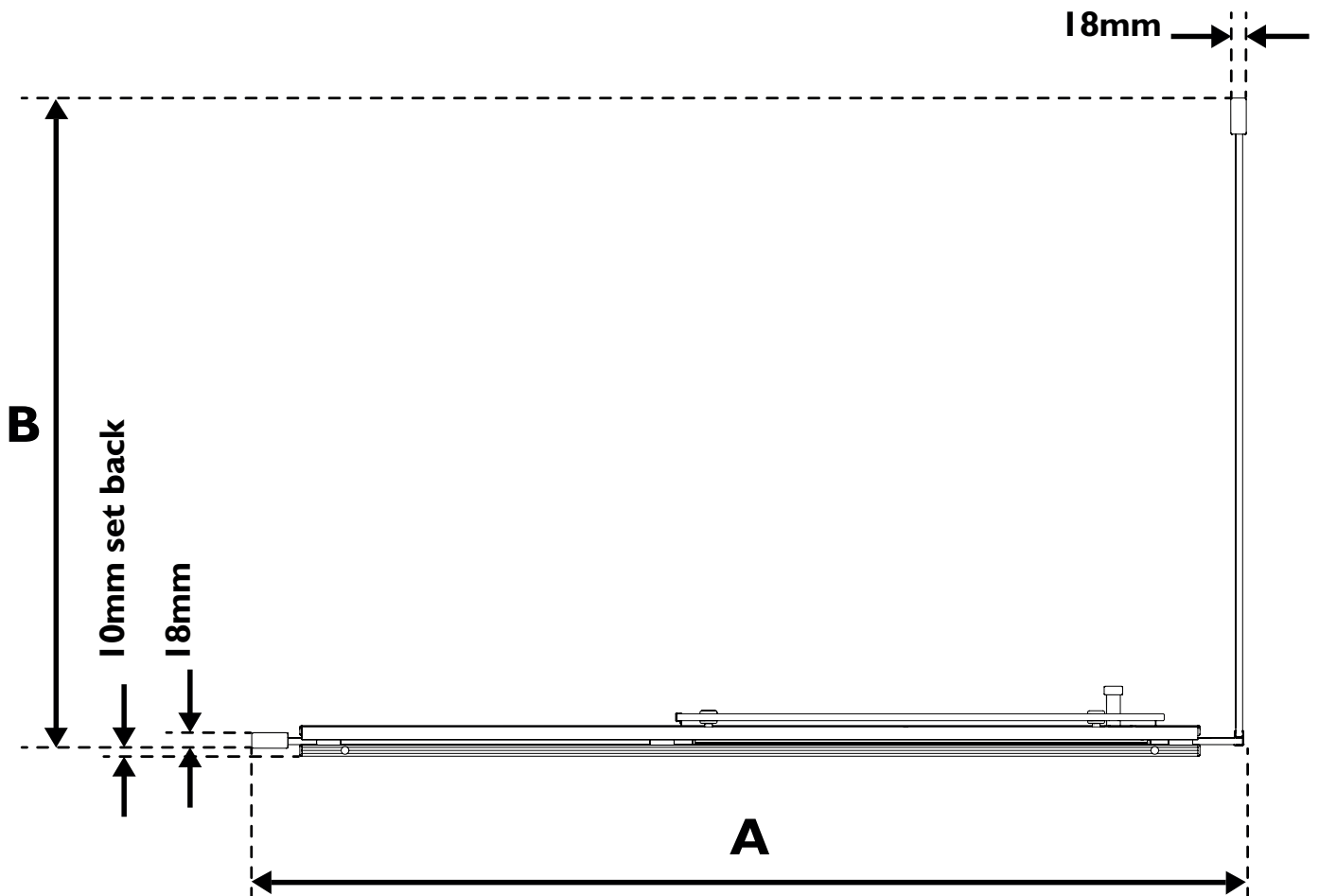
**THESE INSTRUCTIONS ARE TO BE LEFT WITH THE CONSUMER**

Product Sizes and Adjustments

PRODUCT	PACK CODES		DIMENSIONS (mm)
SLIDER	PACK ONE	PACK TWO	<b>A</b>
<b>1200</b>	EVS1(C/BK)	SEVX(C/BK)	1155 to 1175
<b>1400</b>	EVS2(C/BK)	SEVY(C/BK)	1355 to 1375
<b>1500</b>	EVS2(C/BK)	SEVZ(C/BK)	1455 to 1475

PRODUCT	PACK CODES	DIMENSIONS (mm)
SIDE PANEL		<b>B</b>
<b>760</b>	76EVP	715 to 735
<b>800</b>	8EVP	755 to 775
<b>900</b>	9EVP	855 to 875

**ENCLOSURE HEIGHT = 2000mm**

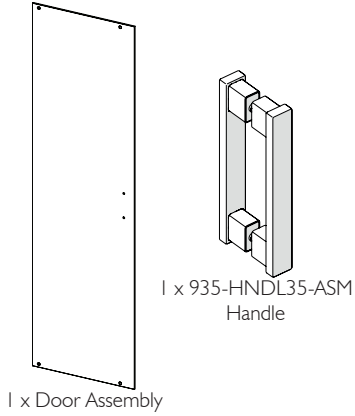


## Important

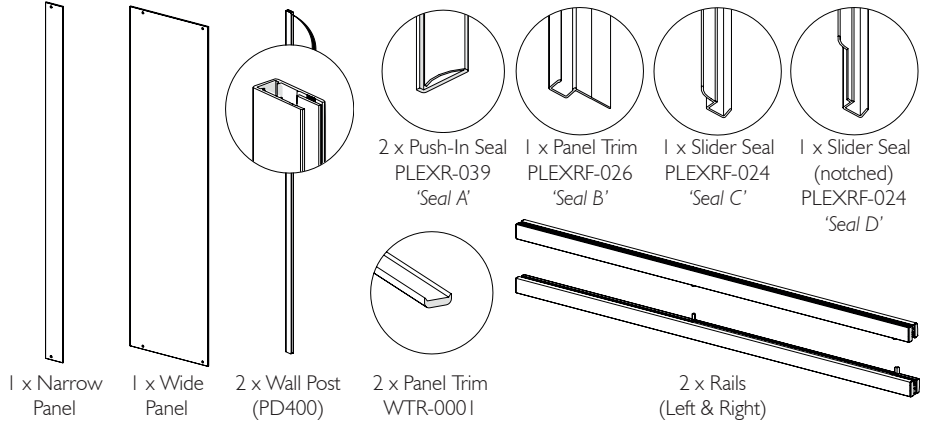
TO APPLY FOR A CORNER SITUATION ONLY. DISREGARD THE RECESS PANEL INSTRUCTIONS.

### Parts List

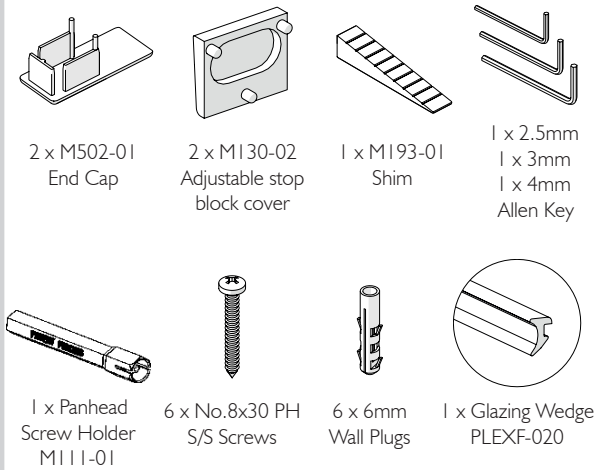
#### Door Pack



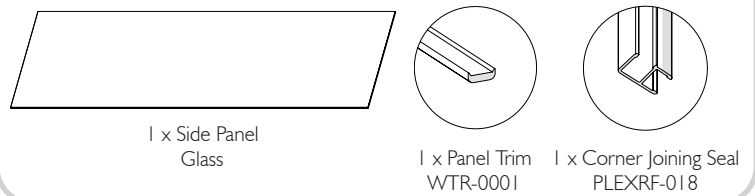
#### In-line Panels Pack



#### Installation Pack



#### Side Panel Pack for Corner



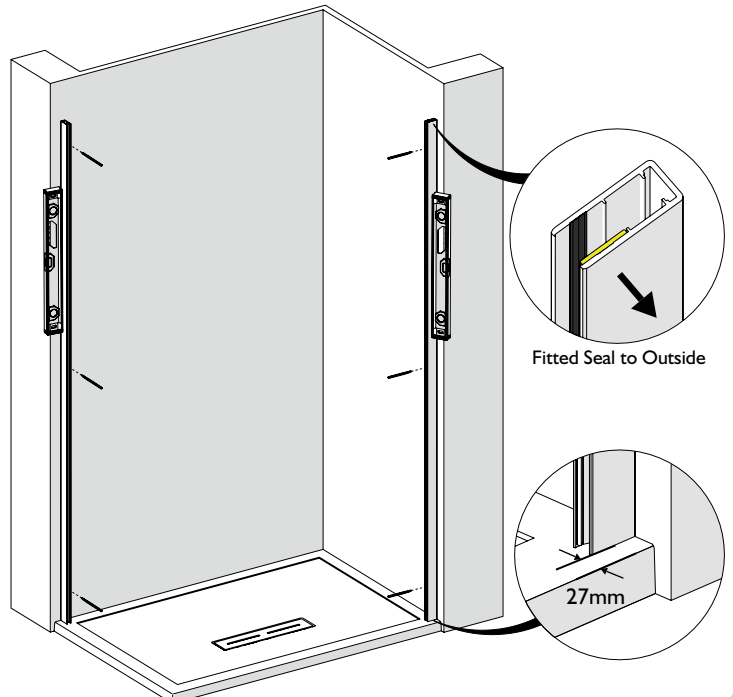
#### Glass Assembly Installation Pack



### Installation Steps

#### 1. Position and Mark Wallposts

1. Position Wallposts (with fitted seal to outside) 27mm in from front edge of tray, as shown below. Using spirit level to ensure wallposts are vertical.
2. Mark through the 6 slots (3 per wallpost) onto the wall surface like shown and remove wallpost.

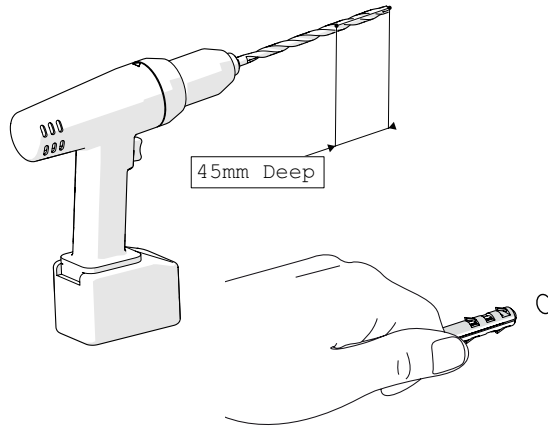


### Step 2 - Drill Mounting Holes

1. Remove the wallposts.  
Placing safely off to one-side.

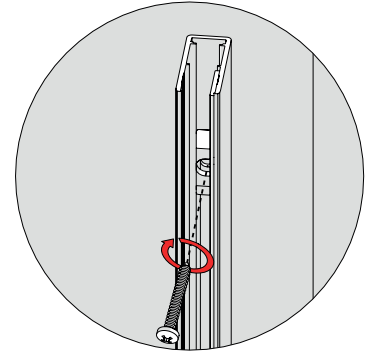
2. Using a 7mm masonry drill bit and drill (or appropriate drill bit if drilling tiles), drill six (3x2) holes for the wallposts using the 'spot' marks from step 1, each hole should be 45mm in depth.

3. Insert the six '6mm Wall Plugs' into the six holes.



### Step 3 - Fix wallposts

1. Fix wallposts using 6 x No.8x30 PH S/S Screws provided. Tighten all screws using pozi-head screwdriver, ensuring the wallpost is vertical.

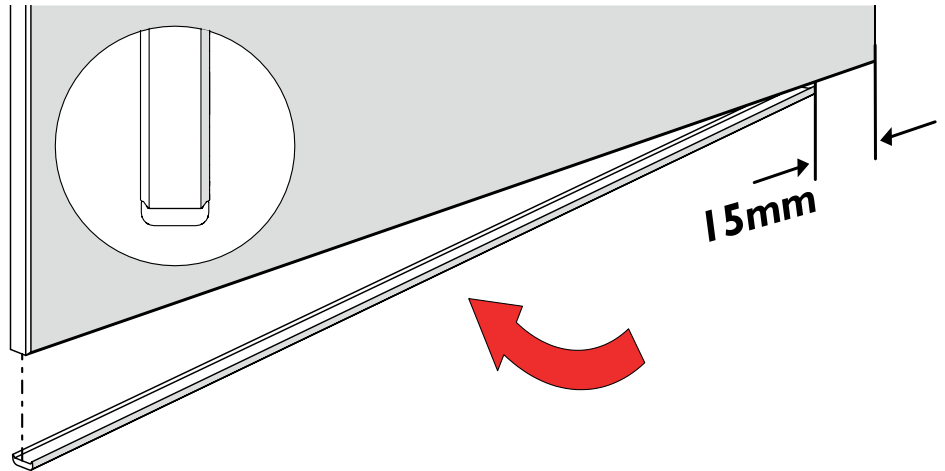


### Step 4 - Fit Bottom Trim To Side Panel

1. Take note of label **'This surface to outside'** this will determine which is the bottom edge of your installation.

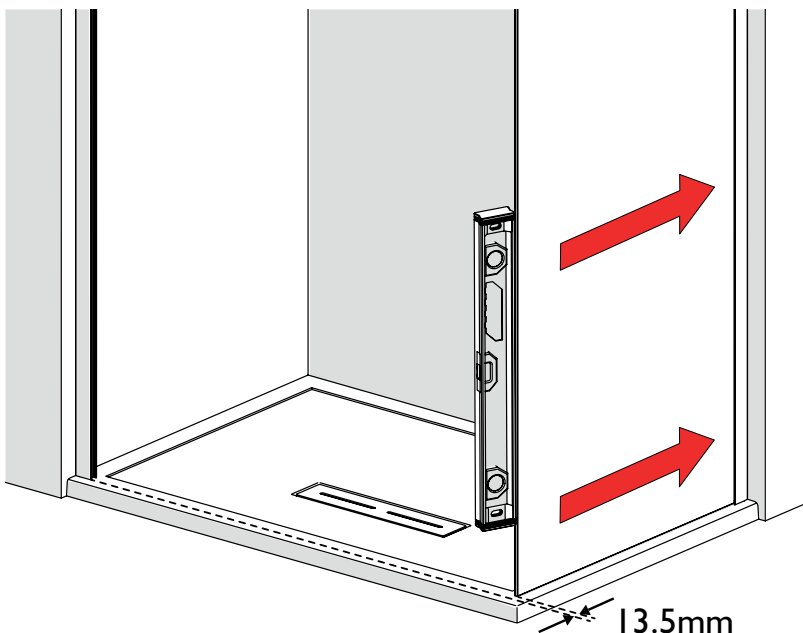
2. Acquire the WTR-0001 Trim from the Side Panel Pack. Peel off a small length of the bottom trim adhesive tape and apply to bottom of glass panel 15mm from the end that will be going into the wallpost, as shown. Continue along length of trim, peeling away the tape as you go, until the full trim length is adhered to the panel.

Use small upturned edges on bottom trim against chamfered glass edges to ensure trim is fitted centrally.



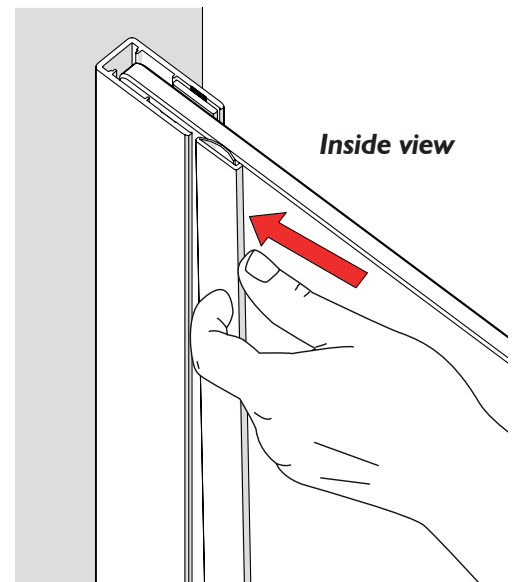
### Step 5 - Fit Side Panel

- Carefully fit glass side panel into slot in wallpost, ensuring panel is parallel to tray edge.
- Position outer edge of side panel **13.5mm** back from the outer face of the adjacent door wallpost, as shown. **Ensure factory drawn lines on side panel glass do not extend beyond front face of wallpost.**
- Ensure outer edge of side panels vertical, as shown, using spirit level.



### Step 6 - Insert Push-In Seal

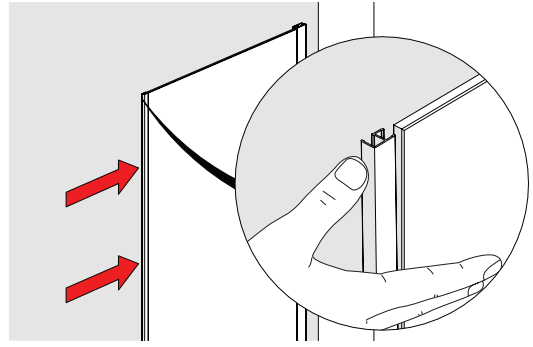
1. Acquire Seal A 'Push-In Seal (PLEXR-039)' and insert the seal to the inside of the enclosure, between the side glass panel and lip of the metal on post, ensuring the curved surface is contacting the glass. Start at the top and work downward, until the seal is fully inserted all the way down the panel, if tight, lubricate the seal with water.



### Step 7 - Fit Glass to Glass Corner Seal

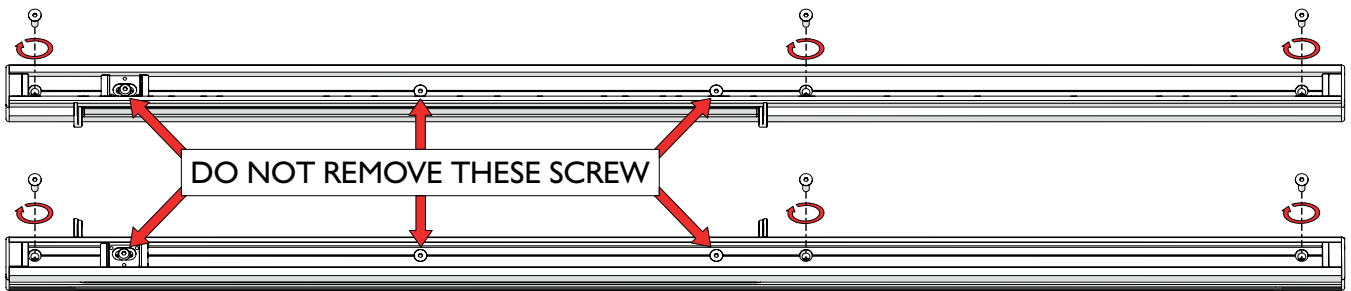
1. Fit glass to glass corner seal to edge of side glass panel, ensuring seal is level with top and bottom of glass panel. Note orientation of seal. Make sure the seal is fully inserted from top to bottom, use your thumb to apply pressure, as shown.

If tight, lubricate corner seal and glass edges with a damp **CLEAN** cloth to ease fitment - the water will evaporate over a short period. **DO NOT USE** silicone spray or any other substance other than water, these will not fully dry out and will compromise the grip and rigidity of the joint.



### Step 8 - Preparation The Rails

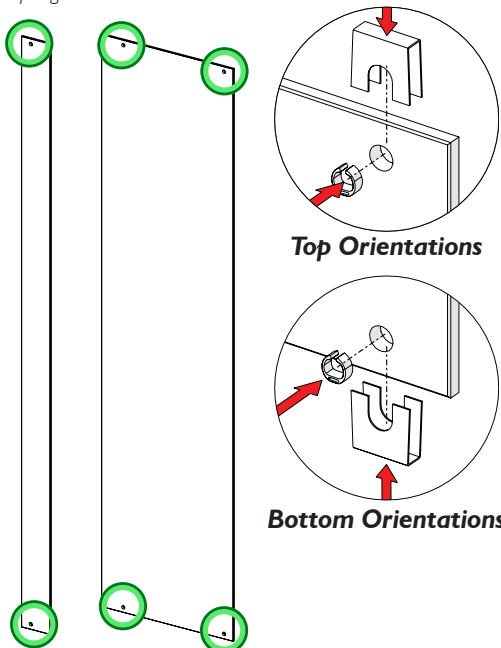
- Carefully unpack the rails from their protective sleeves.
- Using the 3mm allen key provided, remove the 3x M5 screws from each rails, as shown. Store these screws safely to one side as you will need to re-fit these at a later stage.



### Step 9 - Prepare In-line Glass Panels

- Acquire both in-line panels, 6 x M152-01 CAM rings and 6 x M155-02 Glass Protectors.
- Decide handing of the door.
- Take note of label **'This surface to outside'** this will determine which is the bottom edge of your installation.
- To both Glass Panels add the 6x CAM Rings and Glass Protectors as shown for top and bottom. **Note the orientation of the CAM rings.**

Optional: to stop the protectors from moving on the glass add a touch or super glue.

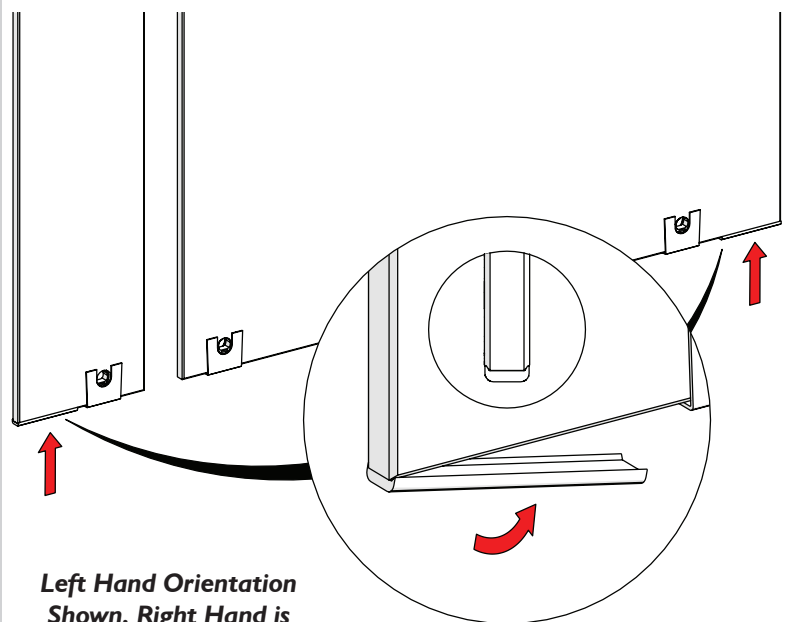


### Step 10 - Add Trim to In-line Glass panels

- Clean glass edge, then make sure it's completely dry.
- Acquire the WTR-0001 Trims. Peel off a small length of the bottom trim adhesive tape and apply to bottom of glass panel to the edge, as shown. Continue along length of trim, peeling away the tape as you go, until the full trim length is adhered to the panel.

Use small upturned edges on bottom trim against chamfered glass edges to ensure trim is fitted centrally.

**Only if installing a 1500 size: the large in-line panel requires the 150mm trim.**



**Left Hand Orientation Shown. Right Hand is mirror image**

## Step 11 - Fit In-Line Glass Panels

1. Depending on handing required position the correct rail onto tray centrally in between the side panel and the wallpost (**right hand access shown**).

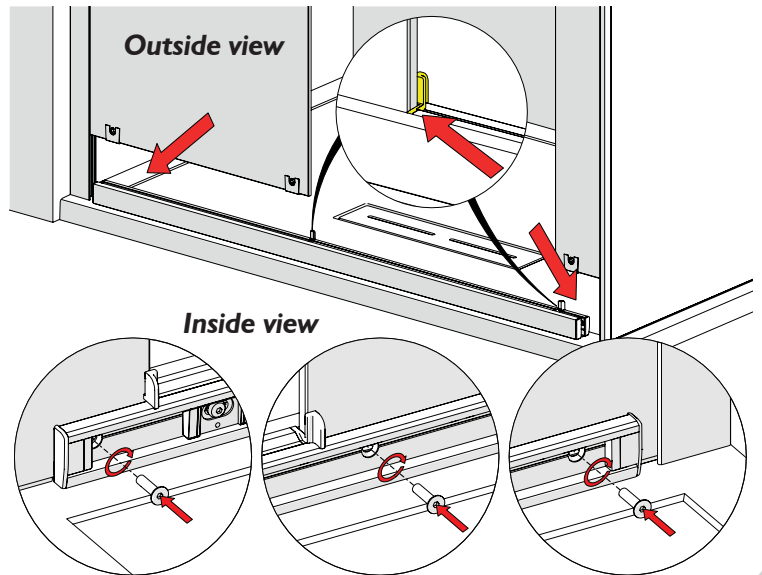
2. Slide the narrow glass panel into the slot of the corner seal and then down into the recess of the bottom rail. Ensure the glass is tight up against the clear plastic end cap, as shown in yellow.

*If tight, lubricate corner seal and glass edges with a damp **CLEAN** cloth to ease fitment - the water will evaporate over a short period. **DO NOT USE** silicone spray or any other substance other than water; these will not fully dry out and will compromise the grip and rigidity of the joint.*

3. Re-insert the M5 screw into the rail and tighten with the 3mm allen key.

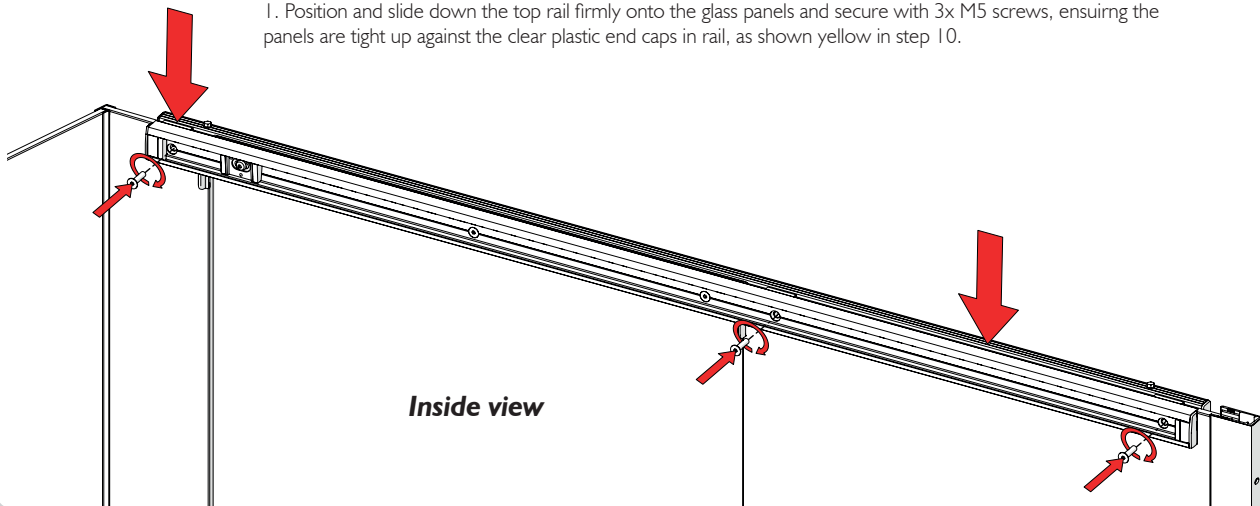
4. Slide the wide glass panel into the slot of the wallpost and then down into the recess of the bottom rail. Ensure the glass is tight up against the clear plastic end cap, as shown in yellow. Secure rail to the panel with 2x screws.

**Shown to install a right hand access enclosure. For left hand see supplementary steps at the end.**



## Step 12 - Fit Top Rail

1. Position and slide down the top rail firmly onto the glass panels and secure with 3x M5 screws, ensuring the panels are tight up against the clear plastic end caps in rail, as shown yellow in step 10.

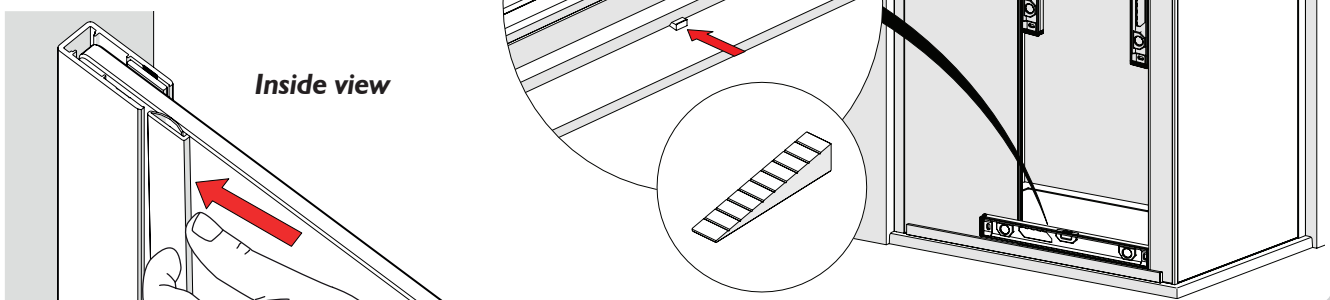


## Step 13 - Level Bottom and Rail

1. Often shower trays have different angled top faces, in order to help keep the frame supported use the 'Shim (M193-01)' supplied. On the inside of the enclosure measure the gap between the bottom of the rail and top of the tray, select the height required from the shim strip supplied, break off and insert under rail. The shim will be concealed by silicone sealant later.

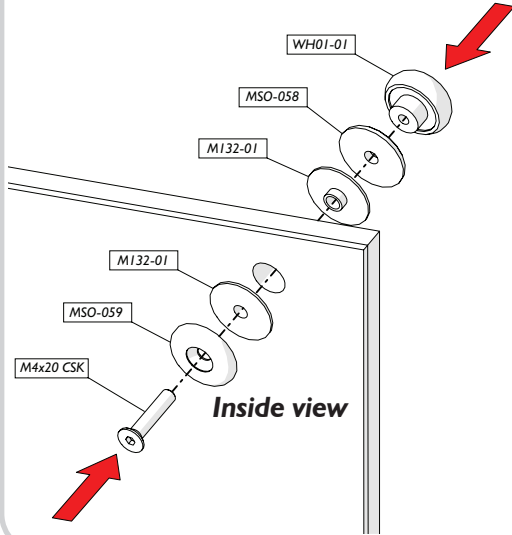
2. Check glass panels are vertical and both rails are horizontal. Also check the marked lines on each glass panel do not protrude beyond wallposts.

1. Acquire Seal A 'Push-In Seal (PLEXR-039)' and insert the seal to the inside of the enclosure, between the side glass panel and lip of the metal on post, ensuring the curved surface is contacting the glass. Start at the top and work downward, until the seal is fully inserted all the way down the panel, if tight, lubricate the seal with water.



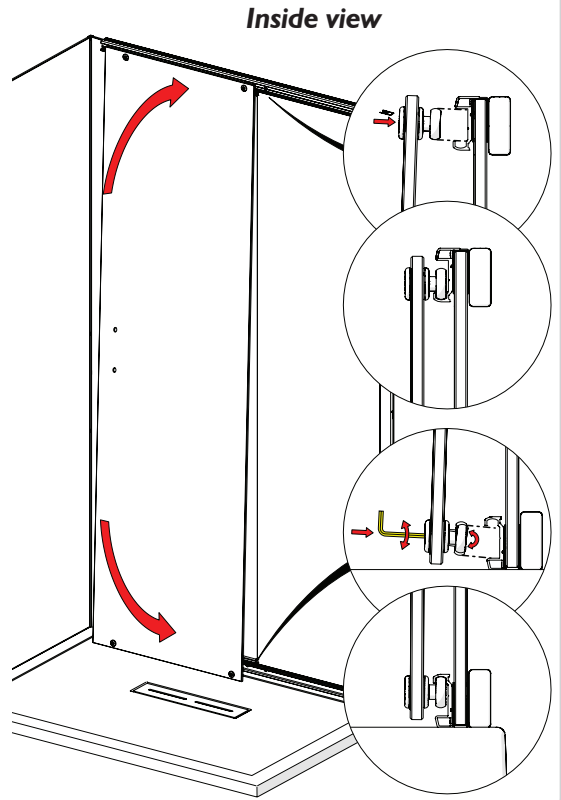
### Step 14 - Assemble Sliding Door

1. Acquire the Door glass and the remaining items from the glass installation pack.
2. Take note of label **'This surface to outside'** this will determine which surface on the door assembly needs to face outside.
3. Add the components to the 4 holes on the Door Glass. Orientation as shown below. Wheels need to be on the outside and the screws facing inside.



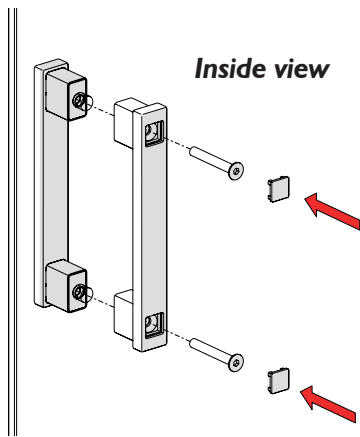
### Step 15 - Fit Sliding Door

1. Ensuring handle holes in slider door are on the correct side, carefully lift door through opening.
2. Angle the door slightly as shown and insert the two top rollers into the running track of the top rail.
3. Using 2.5mm allen key provided, loosen the bottom two roller screws and insert these into bottom track, as shown.
4. Check that the door is hanging vertically, if not, loosen one of both of the top roller screws and move up or down as required to adjust the hanging of the door glass.
5. Once hanging correctly, lift both bottom rollers up into the running track and tighten screws.



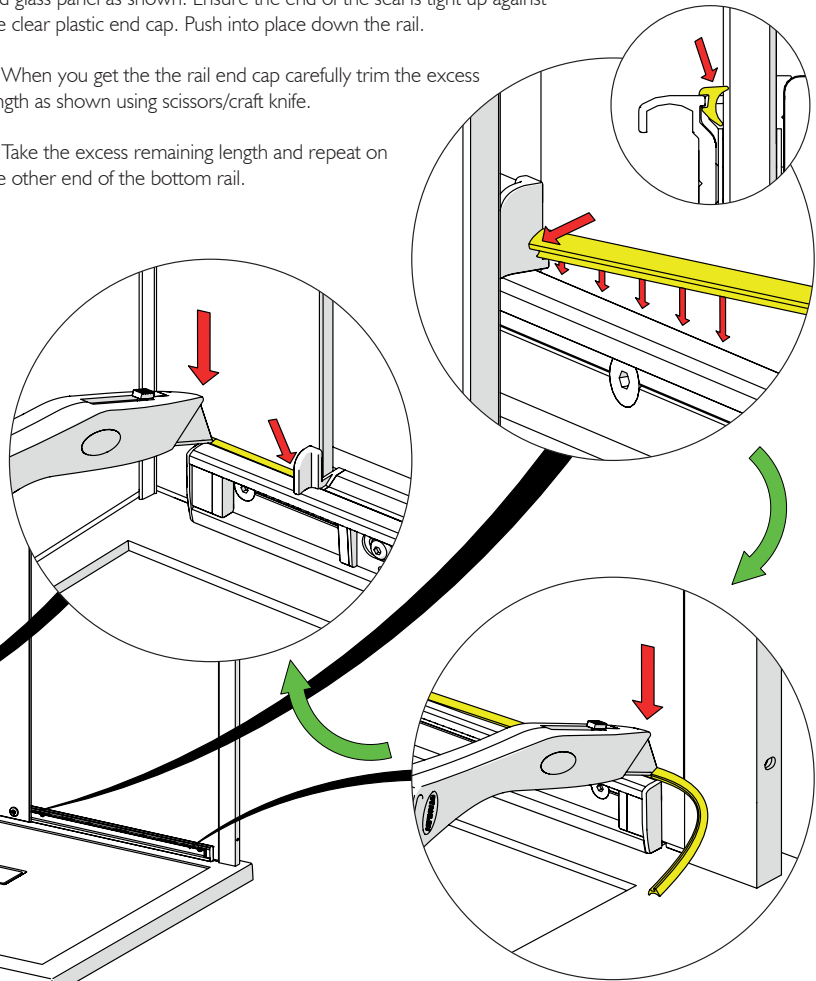
### Step 16 - Fit Handle

1. Fit outer and inner handle to door glass using long screws provided. Tighten screws using 4mm allen key provided and fit square cover caps to conceal screw heads, as shown.



### Step 17 - Fit Seal to bottom Rail

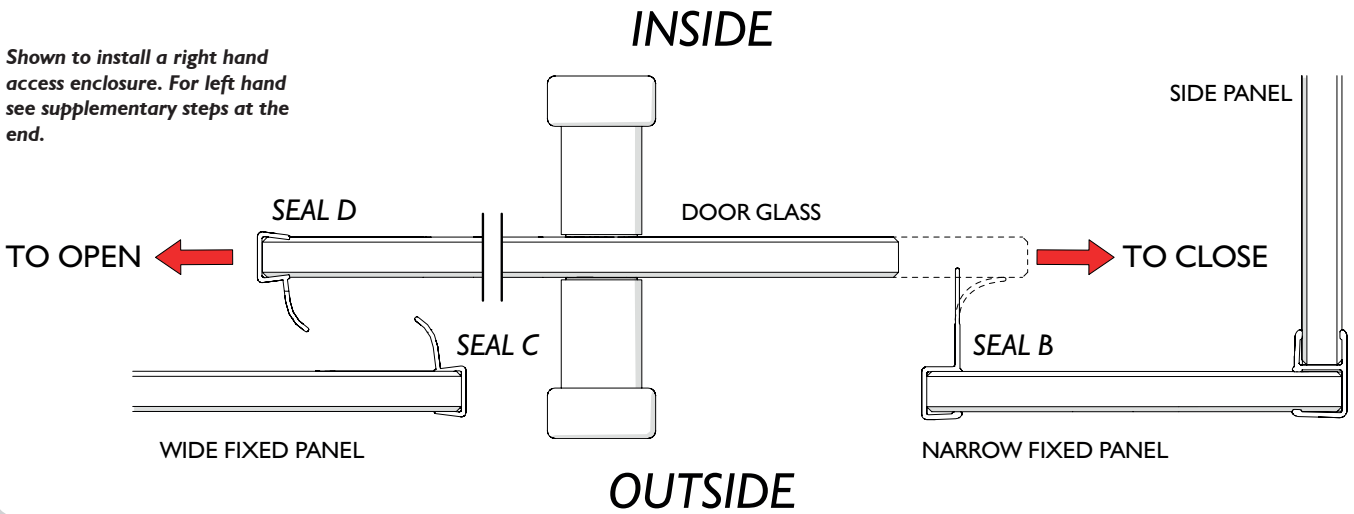
1. Acquire PLEXF-020 seal. Insert seal into recess between bottom rail and glass panel as shown. Ensure the end of the seal is tight up against the clear plastic end cap. Push into place down the rail.
2. When you get to the rail end cap carefully trim the excess length as shown using scissors/craft knife.
3. Take the excess remaining length and repeat on the other end of the bottom rail.



### Step 18 - Fit Vertical Seals

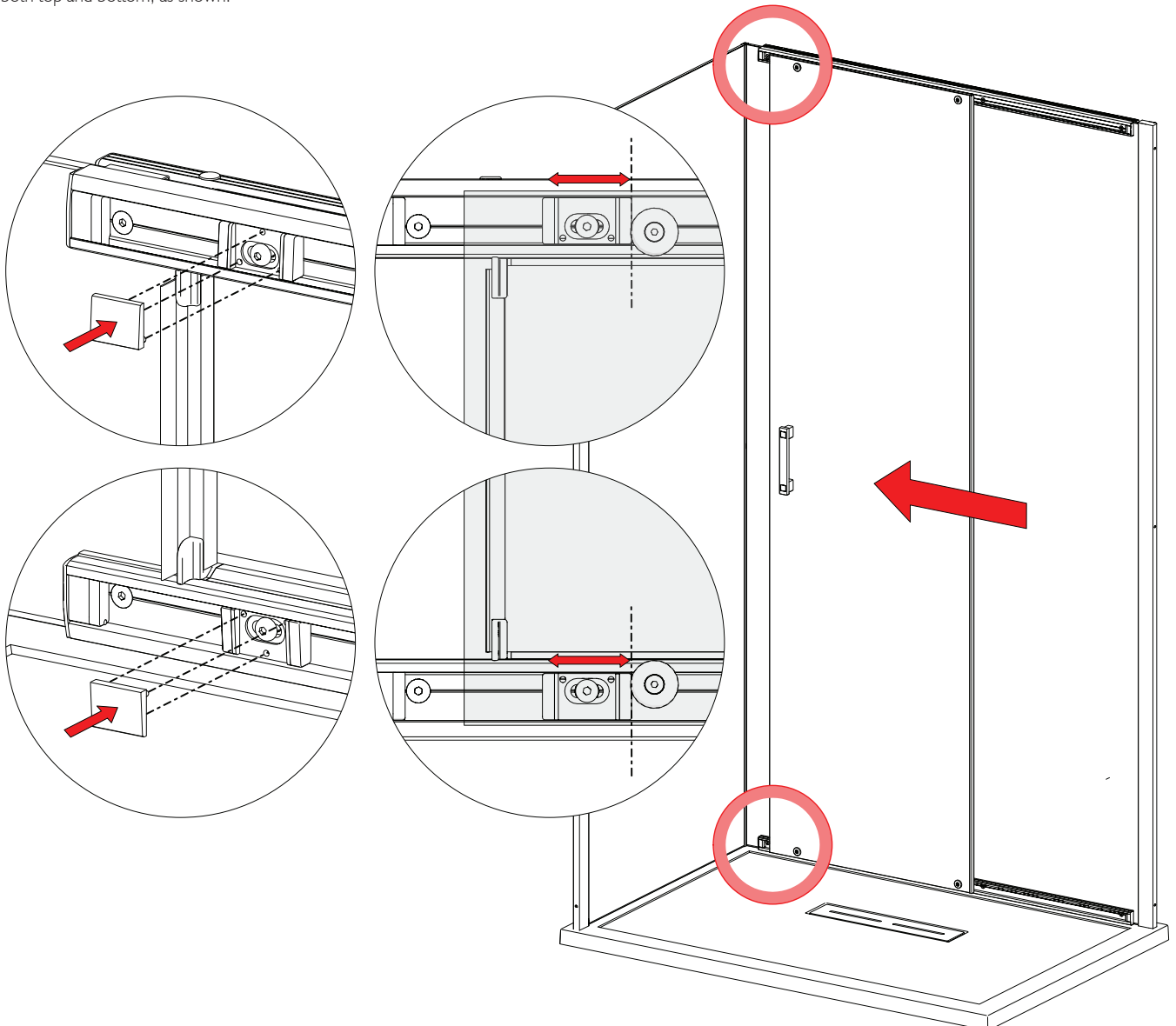
1. Fit seals to vertical edges of the glass, as shown. Seal B (1926mm) needs to go on the Narrow Fixed Panel. Seal C (1926mm) needs to go on Wide Fixed Panel. Seal D (1989mm & notched) needs to go on the door glass opening end. Ensure the two seals which fit on the fixed panels slot inside the rail clear plastic end caps at top and bottom. These seals must be fitted correctly, if not, the seals will fail prematurely.

**Shown to install a right hand access enclosure. For left hand see supplementary steps at the end.**



### Step 198 - Final Check and Adjustments

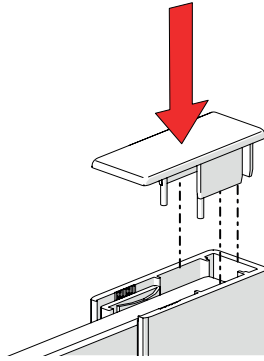
1. The door wheels should come into contact at the same time top and bottom with the stoppers when closing, to avoid causing the door to "kick". If necessary they may be adjusted up to the wheels in the closed position. Acquire the 2x Adjustable stop block covers (M130-02) from the installation pack and fit to stopper both top and bottom, as shown.





### Step 20 - Insert Wallpost End Caps

1. Add the End Caps (M1502-01) to the Wallposts as shown below.

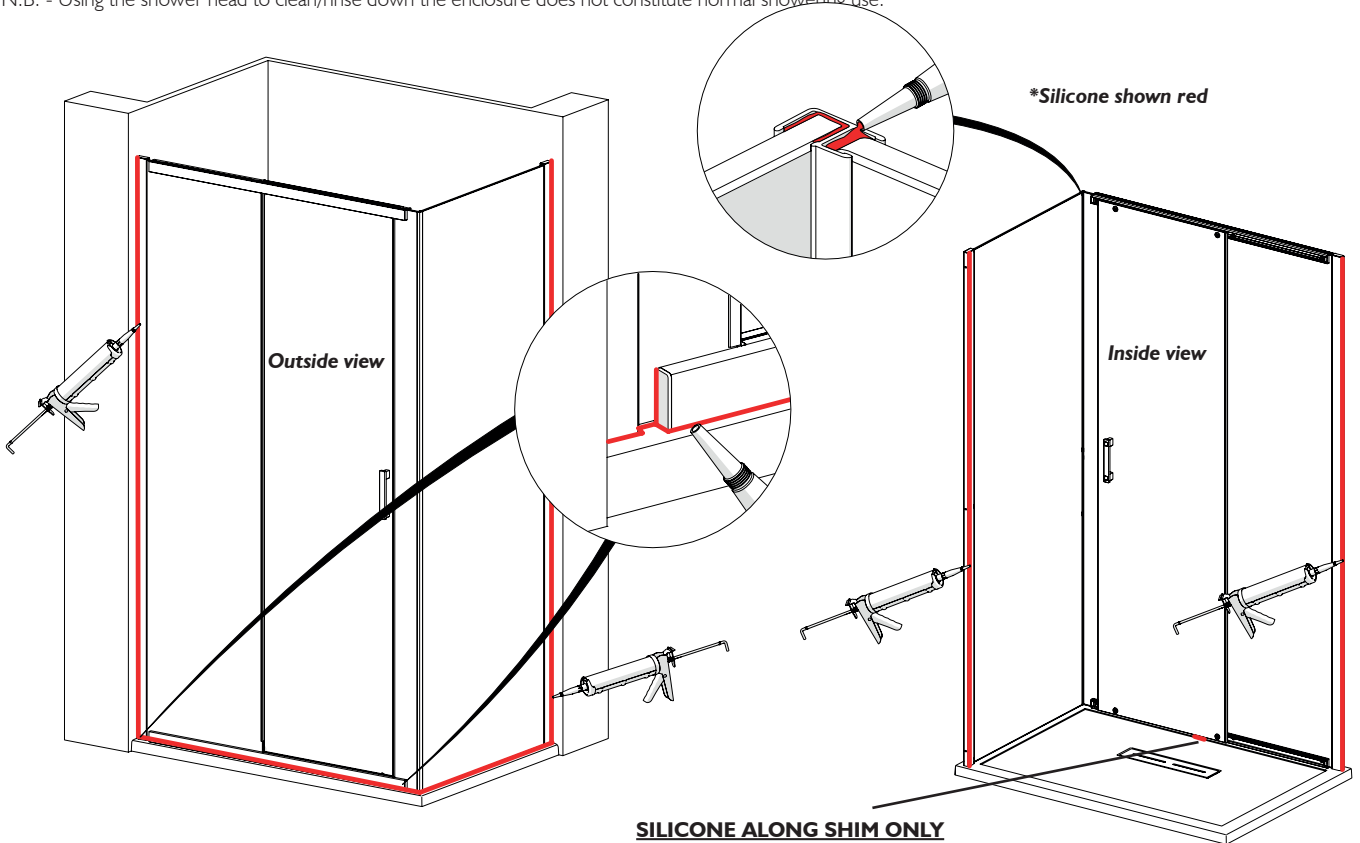


### Step 21 - Silicone

1. On the outside, silicone around all three junctions with the wall and tray, and also on the wallposts where the sill meets the uprights. Seal up both ends of bottom rail to glass panels, as shown in detail below. On the inside, only silicone along the two vertical junctions with the wall.

2. **Do not silicone seal on the inside of unit (except where shown)**. this can result in leakage problems - please note that, in use, water can penetrate into the extrusions - this has no detrimental effect to the product- however, this water must be allowed to drain out of the extrusions to the inside.

When installed correctly, Kudos guarantee the enclosure will not leak under normal showering use, ie. when the shower head is in it's normal showering position.  
N.B. - Using the shower head to clean/rinse down the enclosure does not constitute normal showering use.



### Step 22 - Wait 24hr

1. Allow 24 hours before using the shower.



## Supplementary Steps for Handing of the Door

### Important

THESE INSTRUCTIONS ARE FOR THE PURPOSE OF CHANGING THE SIDE FROM WHICH THE DOOR WILL OPEN SHOULD THIS BE REQUIRED. IN WHICH CASE THEY SHOULD BE FOLLOWED BEFORE PROCEEDING WITH THE INSTALLATION INSTRUCTIONS. IF YOU DO NOT REQUIRE TO CHANGE THE OPENING SIDE TO THE OPPOSITE SIDE PLEASE IGNORE THESE INSTRUCTIONS AND REFER DIRECTLY TO THE INSTALLATION INSTRUCTIONS.

### Step 11b - Fit In-Line Glass Panels

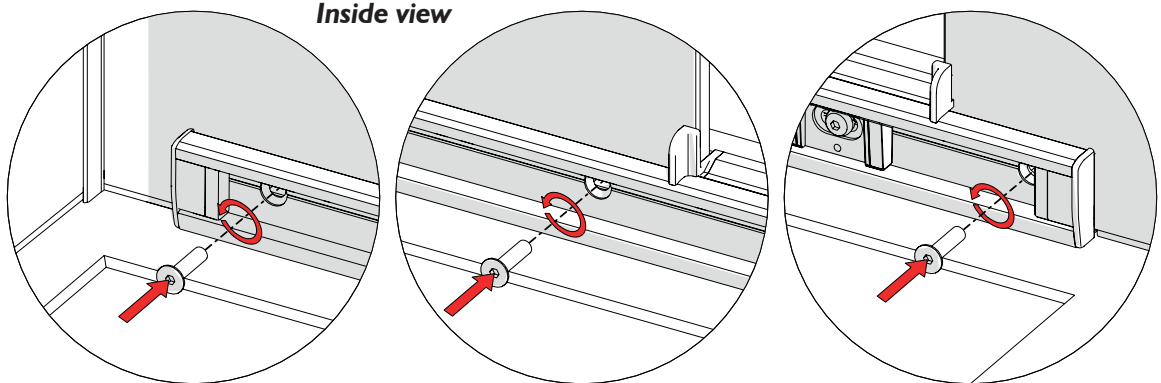
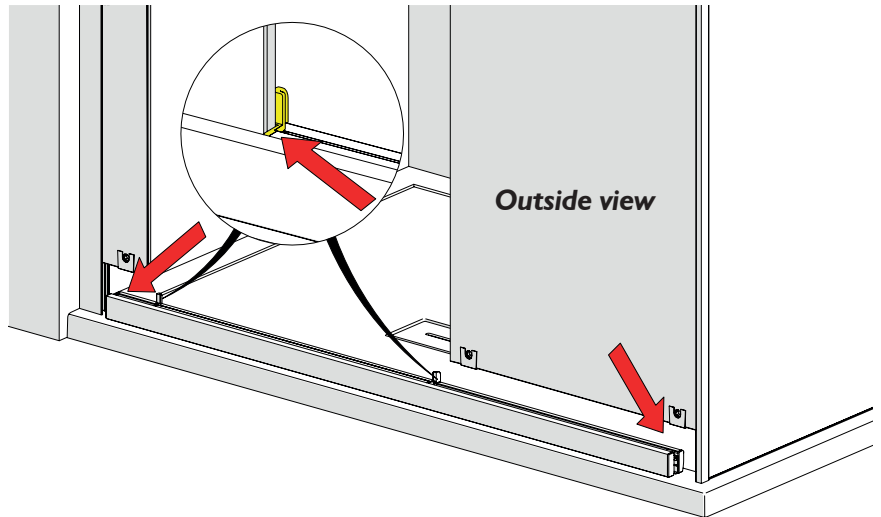
1. Depending on handing required position the correct rail onto tray centrally in between the side panel and the wallpost (**left hand access shown**).

2. Slide the wide glass panel and then down into the recess of the bottom rail then slot into the corner seal. Ensure the glass is tight up against the clear plastic end cap, as shown in yellow.

*If tight, lubricate corner seal and glass edges with a damp **CLEAN** cloth to ease fitment - the water will evaporate over a short period. **DO NOT USE** silicone spray or any other substance other than water, these will not fully dry out and will compromise the grip and rigidity of the joint.*

3. Re-insert the 2x M5 screw into the rail and tighten with the 3mm allen key.

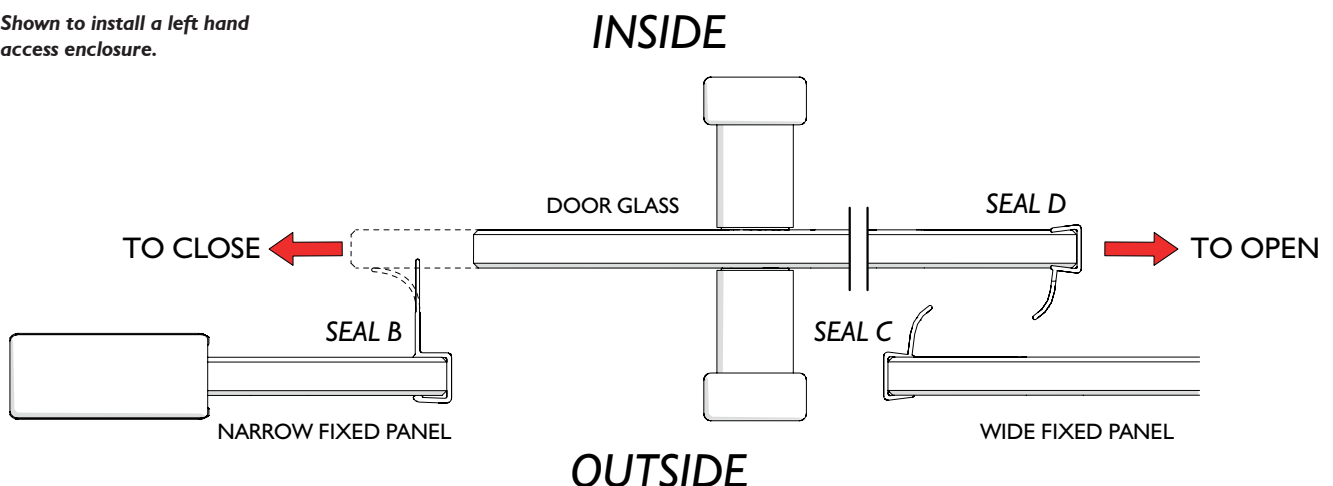
4. Slide the narrow glass panel into the slot of the wallpost and then down into the recess of the bottom rail. Ensure the glass is tight up against the clear plastic end cap, as shown in yellow. Secure rail to the panel with 2x screws.



### Step 18b - Fit Vertical Seals

1. Fit seals to vertical edges of the glass, as shown. Seal B (1926mm) needs to go on the Narrow Fixed Panel. Seal C (1926mm) needs to go on Wide Fixed Panel. Seal D (1989mm & notched) needs to go on the door glass opening end. Ensure the two seals which fit on the fixed panels slot inside the rail clear plastic end caps at top and bottom. These seals must be fitted correctly, if not, the seals will fail prematurely.

**Shown to install a left hand access enclosure.**

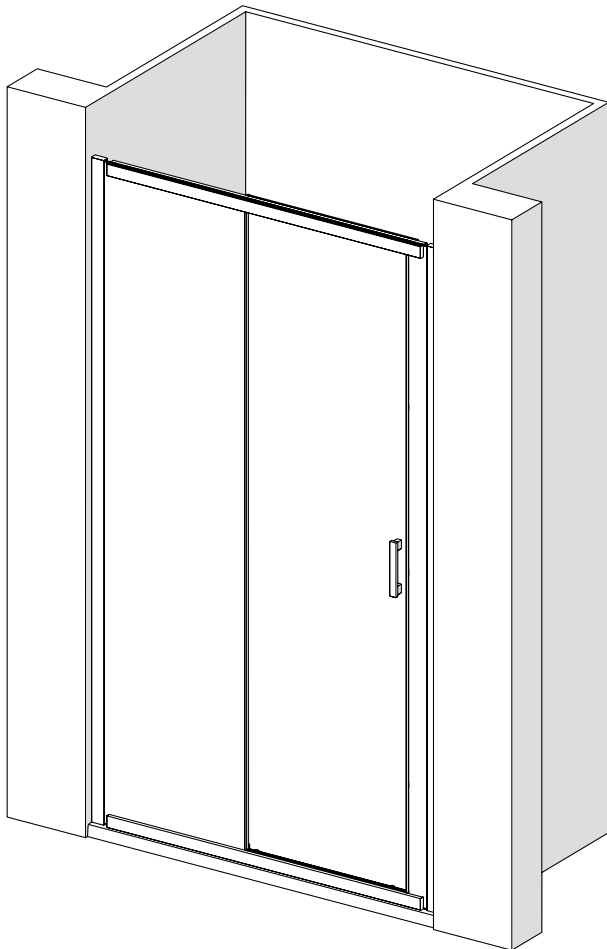




Please read these instructions throughout before installing as incorrect fitting will invalidate the guarantee.  
If you are unsure about these instructions please contact Barwick Bathroom Distribution LLP 01274 687555.

**HEALTH & SAFETY WARNING**

**DUE TO THE WEIGHT & SIZE OF THE GLASS PANEL(S) A MINIMUM OF TWO PERSONS ARE REQUIRED TO MOVE AND INSTALL THIS ENCLOSURE**



**Tools Required**



**Cleaning - General**

For the wall post and fixings use only warm soapy water and damp cloth/ sponge on a regular basis. After cleaning please rinse with clean water to remove any residue.

Do not use abrasive scouring powders, chemicals or aerosol cleaners - these may result in damage to the surfaces, in particular, the plated component parts.

**Glass Treatment**

The glass panels are pre-treated with a protective coating on the inside surfaces only. Whilst this makes cleaning the glass easier and helps prevent the build up of harmful lime-scale and soap deposits, the glass still needs to be maintained on a regular basis. We recommend the use of a detergent and aroma free glass cleaner (A 50/50 mix of white vinegar and water works well)

DO NOT use strong detergents, abrasive cleaners or abrasive scrubbing equipment for cleaning, these can damage the coating.

DO use a squeegee to remove remaining droplets of water from glass after showering, any build up of residue can be removed easily using an appropriate cleaner and agitation from soft cleaning equipment

**Important**

Check appearance of all product - any defects must be reported to your retailer before assembly/installation. Claims for imperfections will only be accepted prior to assembly/installation.

Any claims made under the terms of the Lifetime Guarantee must be reported to your retailer within 21 days of the fault occurring

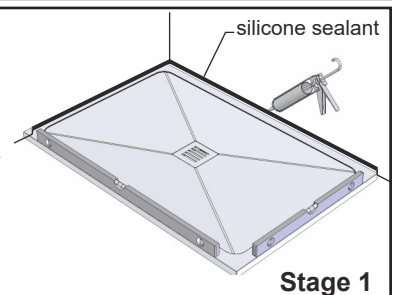
Check the enclosure adjustment sizes are suitable for your installation.

Use care when drilling into the walls to avoid hidden pipes or electric cables.

**Shower Tray**

Ensure the top of shower tray is LEVEL in ALL directions.

Once the tray is installed but before the wall tiles are fitted, any gap between the tray and the walls must be filled with silicone sealant flush with the top of the tray.



**Stage 1**

Once the walls have been tiled but before the enclosure is installed, the tiles must be silicone sealed to the tray all of the way around in one continuous bead.

**Failure to follow these instructions will result in leakage problems.**



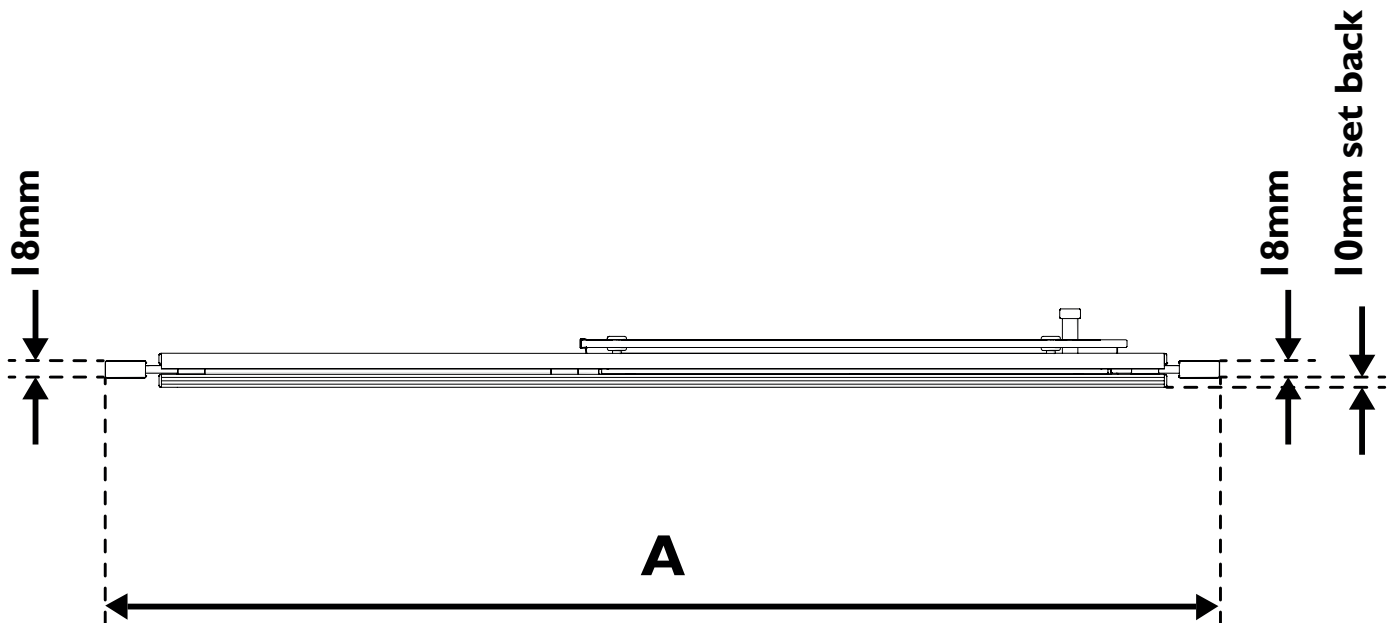
**Stage 2**

**THESE INSTRUCTIONS ARE TO BE LEFT WITH THE CONSUMER**

Product Sizes and Adjustments

PRODUCT	PACK CODES		DIMENSIONS (mm)
SLIDER	PACK ONE	PACK TWO	<b>A</b>
<b>1200</b>	EVS1(C/BK)	SEVX(C/BK)	1155 to 1195
<b>1400</b>	EVS2(C/BK)	SEVY(C/BK)	1355 to 1395
<b>1500</b>	EVS2(C/BK)	SEVZ(C/BK)	1455 to 1495

**ENCLOSURE HEIGHT = 2000mm**

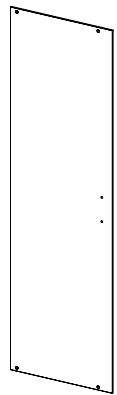


## Important

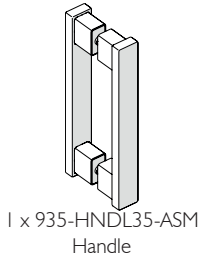
THIS INSTRUCTION IS TO INSTALL A RECESS OPTION ONLY. FOR A CORNER YOU WILL NEED TO PURCHASE A SIDE PANEL PACK ALSO.

### Parts List

#### Door Pack

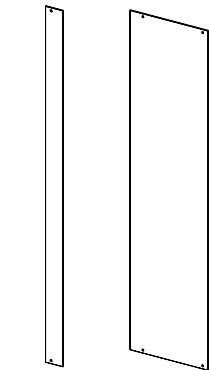


1 x Door Glass



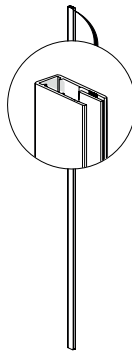
1 x 935-HNDL35-ASM Handle

#### Inline Panels Pack

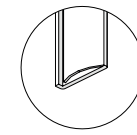


1 x Narrow Panel

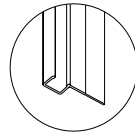
1 x Wide Panel



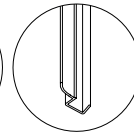
2 x Wall Post (PD400)



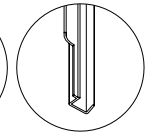
2 x Push-In Seal PLEXR-039 'Seal A'



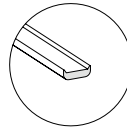
1 x Panel Trim PLEXRF-026 'Seal B'



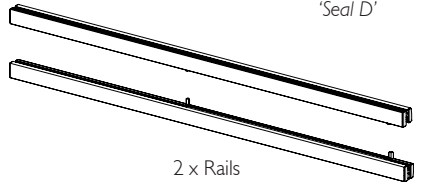
1 x Slider Seal PLEXRF-024 'Seal C'



1 x Slider Seal (notched) PLEXRF-024 'Seal D'

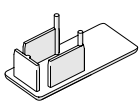


2 x Panel Trim WTR-0001

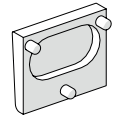


2 x Rails (Left & Right)

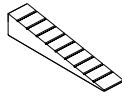
#### Installation Pack



2 x M502-01 End Cap



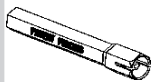
2 x M130-02 Adjustable stop block cover



1 x M193-01 Shim



1 x 2.5mm  
1 x 3mm  
1 x 4mm  
Allen Key



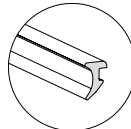
1 x Panhead Screw Holder M111-01



6 x No.8x30 PH S/S Screws

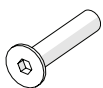


6 x 6mm Wall Plugs

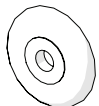


1 x Glazing Wedge PLEXF-020

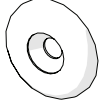
#### Glass Assembly Installation Pack



4 x M4x20 CSK Allen Screw



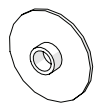
4 x MSO-058 Inside wheel patch



4 x MSO-059 Outside wheel patch



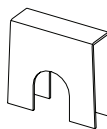
4 x WH01-01 Slider wheel



8 x M132-01 Slider wheel pack



6 x M152-01 CAM Glass Ring

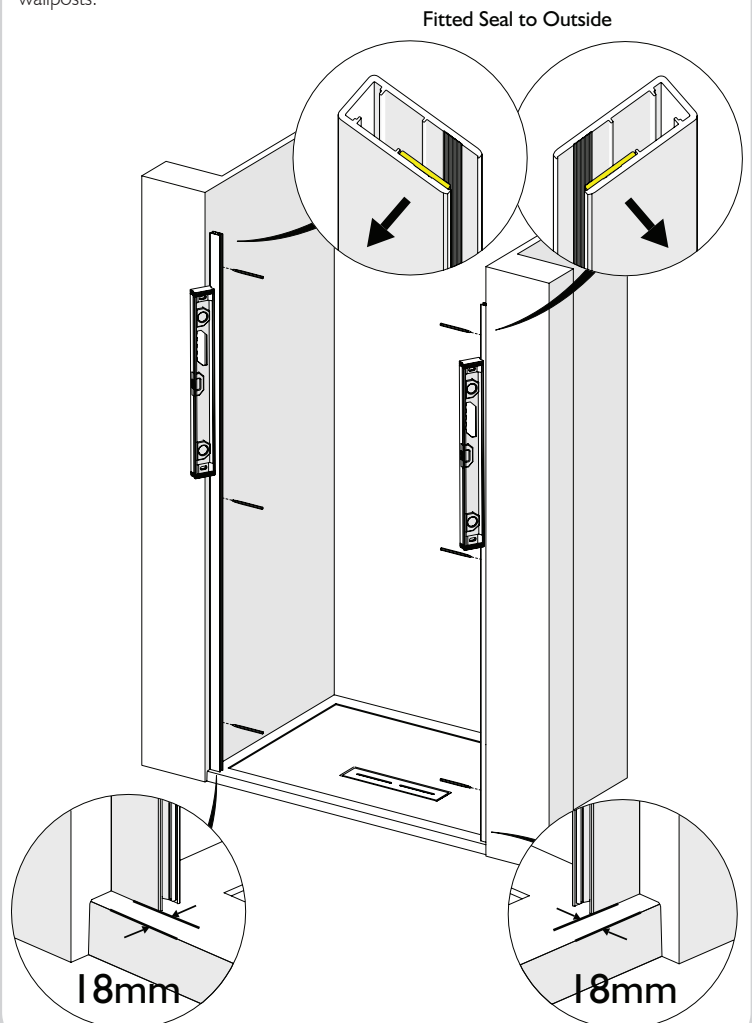


6 x M155-02 Rail Glass Protector

### Installation Steps

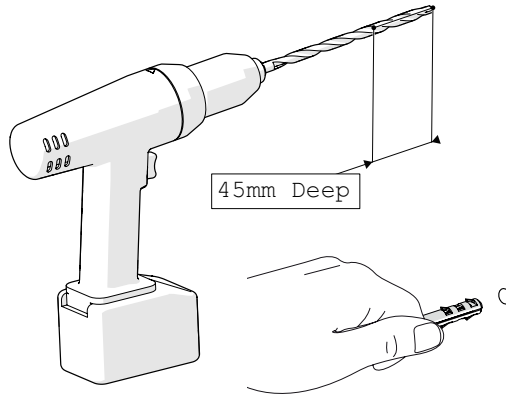
#### Step 1 - Position and Mark Wallposts

1. Position Wallposts (with fitted seal to outside) 18mm in from front edge of tray, as shown below. Using spirit level to ensure wallposts are 'plumb' vertical.
2. Mark through the 6 slots (3 per wallpost) onto the wall surface, as shown and remove wallposts.



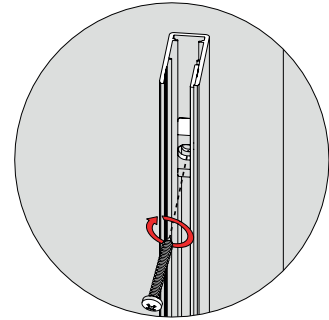
## Step 2 - Drill Mounting Holes

1. Remove the wallposts. Placing safely off to one-side.
2. Using a 7mm masonry drill bit and drill (or appropriate drill bit if drilling tiles), drill six (3x2) holes for the wallposts using the 'spot' marks from step 1, each hole should be 45mm in depth.
3. Insert the six '6mm Wall Plugs' into the six holes.



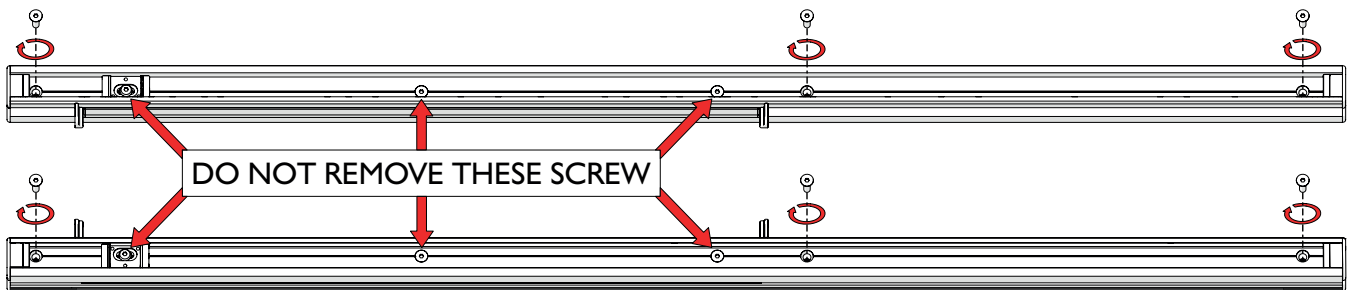
## Step 3 - Fix wallposts

1. Fix wallposts using 6 x No.8x30 PH S/S Screws provided. Tighten all screws using pozi-head screwdriver, ensuring the wallpost is vertical.



## Step 4 - Prepare the Rails

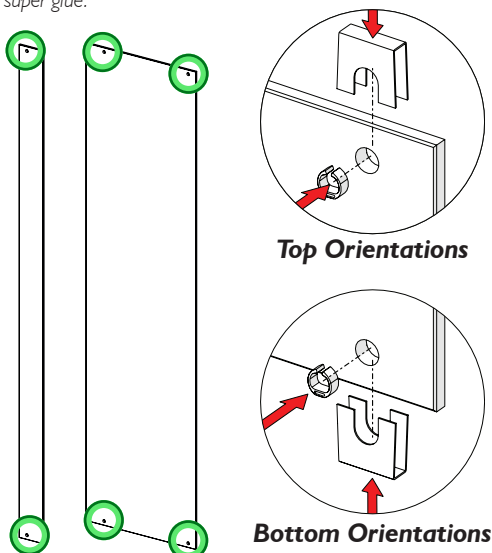
1. Carefully unpack the rails from their protective sleeves.
2. Using the 3mm allen key provided, remove the 3x M5 screws from each rails, as shown. **Store these screws safely to one side as you will need to re-fit these at a later stage.**



## Step 5 - Prepare In-line Glass Panels

1. Acquire both in-line panels, 6 x M152-01 CAM rings and 6 x M155-02 Glass Protectors.
2. Decide handing of the door.
3. Take note of label **'This surface to outside'** this will determine which is the bottom edge of your installation.
4. To both Glass Panels add the 6x CAM Rings and Glass Protectors as shown for top and bottom. **Note the orientation of the CAM rings.**

Optional: to stop the protectors from moving on the glass add a touch of super glue.

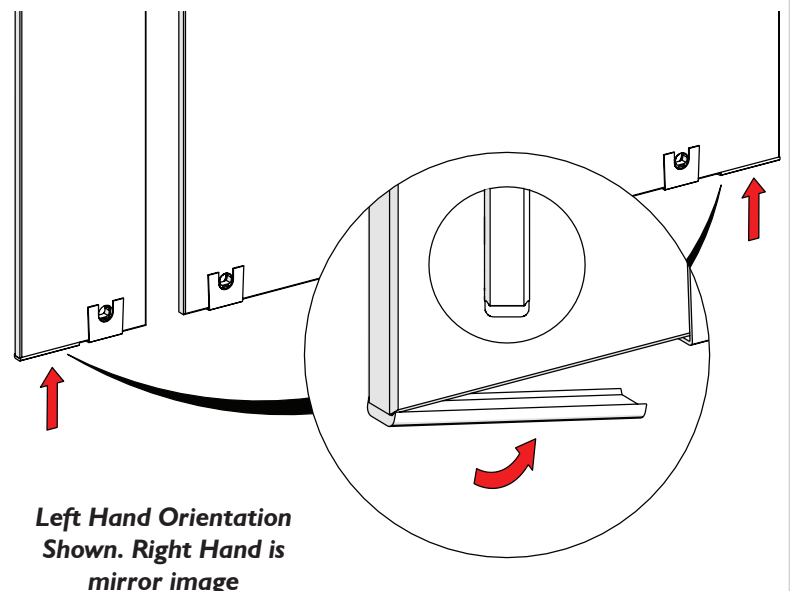


## Step 6 - Add Trim to In-line Glass panels

1. Clean glass edge, then make sure it's completely dry.
2. Acquire the WTR-0001 Trims. Peel off a small length of the bottom trim adhesive tape and apply to bottom of glass panel to the edge, as shown. Continue along length of trim, peeling away the tape as you go, until the full trim length is adhered to the panel.

Use small upturned edges on bottom trim against chamfered glass edges to ensure trim is fitted centrally.

**Only if installing a 1500 size: the large in-line panel requires the 150mm trim.**

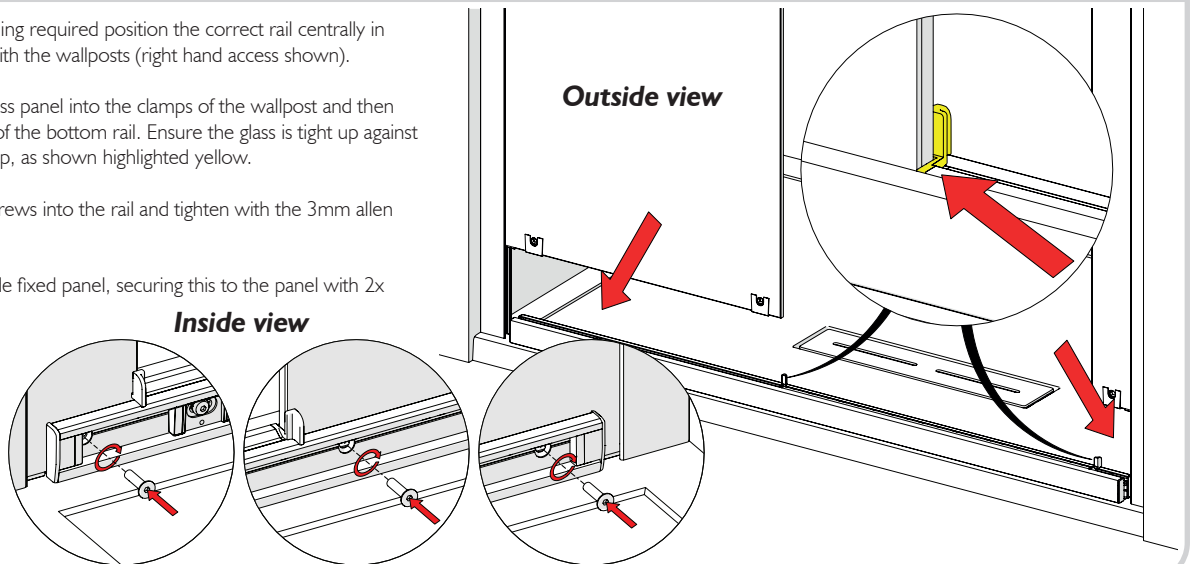


**Left Hand Orientation Shown. Right Hand is mirror image**

### Step 7 - Fit In-Line Glass Panels

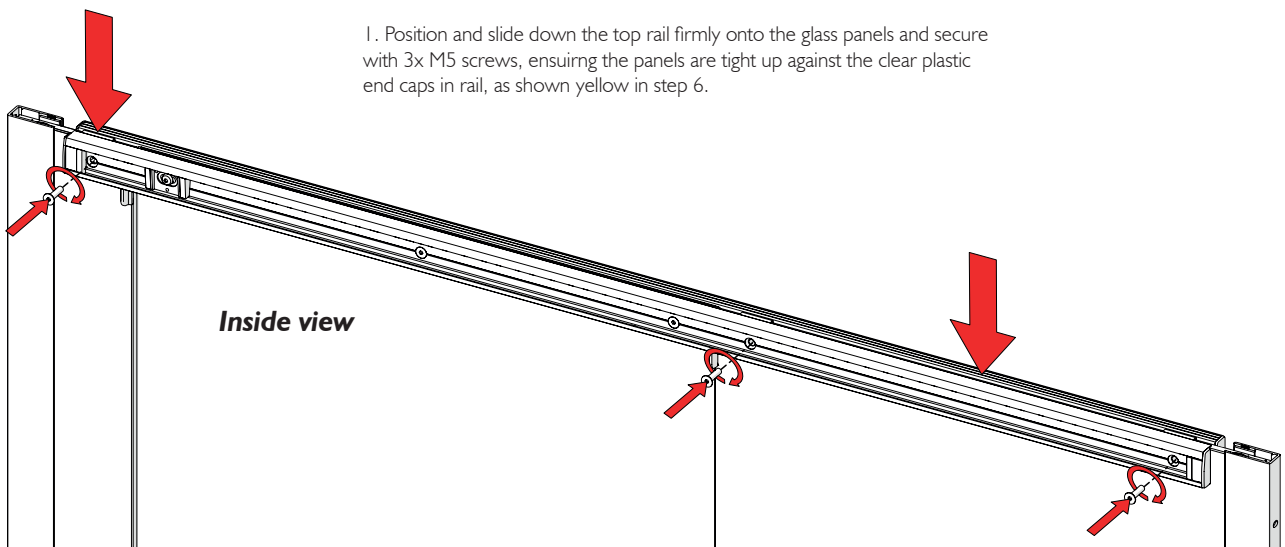
1. Depending on handing required position the correct rail centrally in between and in-line with the wallposts (right hand access shown).
2. Slide the narrow glass panel into the clamps of the wallpost and then down into the recess of the bottom rail. Ensure the glass is tight up against the clear plastic end cap, as shown highlighted yellow.
3. Re-insert the M5 screws into the rail and tighten with the 3mm allen key.
4. Repeat with the wide fixed panel, securing this to the panel with 2x screws in rail.

**Shown to install a right hand access enclosure. For left hand see supplementary steps at the end.**



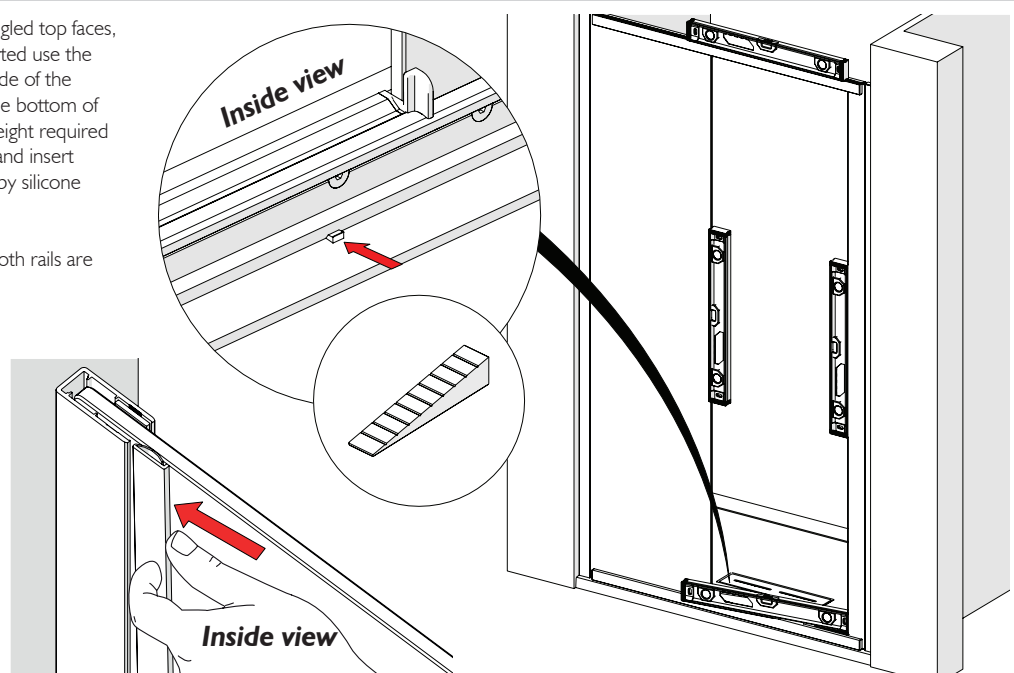
### Step 8 - Fit Top Rail

1. Position and slide down the top rail firmly onto the glass panels and secure with 3x M5 screws, ensuring the panels are tight up against the clear plastic end caps in rail, as shown yellow in step 6.



### Step 9 - Level Bottom Rail

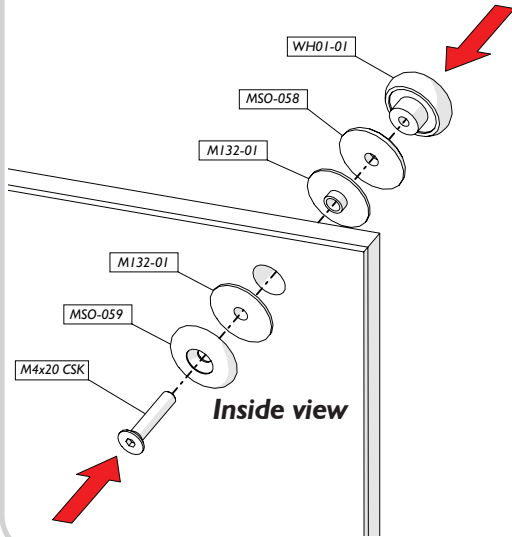
1. Often shower trays have different angled top faces, in order to help keep the frame supported use the 'Shim (M193-01)' supplied. On the inside of the enclosure measure the gap between the bottom of the rail and top of the tray, select the height required from the shim strip supplied, break off and insert under rail. The shim will be concealed by silicone sealant later.
2. Check glass panels are vertical and both rails are horizontal.
3. Acquire 2x Seal A 'Push-In Seal (PLEXR-039)' and insert the seal to the the wallposts from the inside of the enclosure, between the glass panels and lip of the metal on post, ensuring the curved surface is contacting the glass. Start at the top and work downward, until the seal is fully inserted all the way down the panel, if tight, lubricate the seal with water.





### Step 10 - Assemble Sliding Door

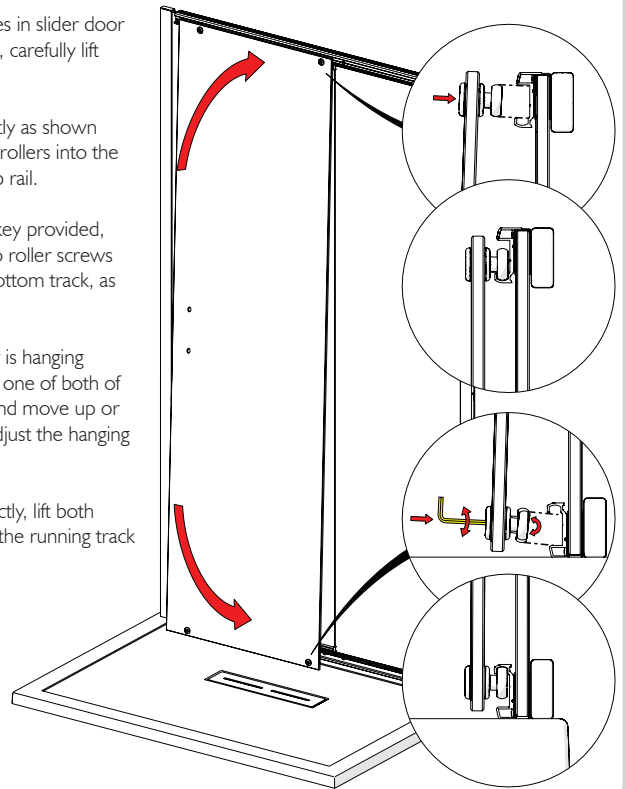
1. Acquire the Door glass and the remaining items from the glass installation pack.
2. Take note of label **'This surface to outside'** this will determine which surface on the door assembly needs to face outside.
3. Add the components to the 4 holes on the Door Glass. Orientation as shown below. Wheels need to be on the outside and the screws facing inside.



### Step 11 - Fit Sliding Door

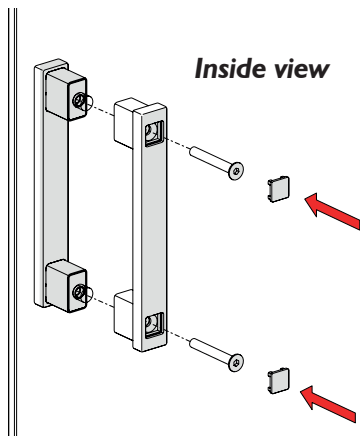
1. Ensuring handle holes in slider door are on the correct side, carefully lift door through opening.
2. Angle the door slightly as shown and insert the two top rollers into the running track of the top rail.
3. Using 2.5mm allen key provided, loosen the bottom two roller screws and insert these into bottom track, as shown.
4. Check that the door is hanging vertically, if not, loosen one of both of the top roller screws and move up or down as required to adjust the hanging of the door glass.
5. Once hanging correctly, lift both bottom rollers up into the running track and tighten screws.

**Inside view**



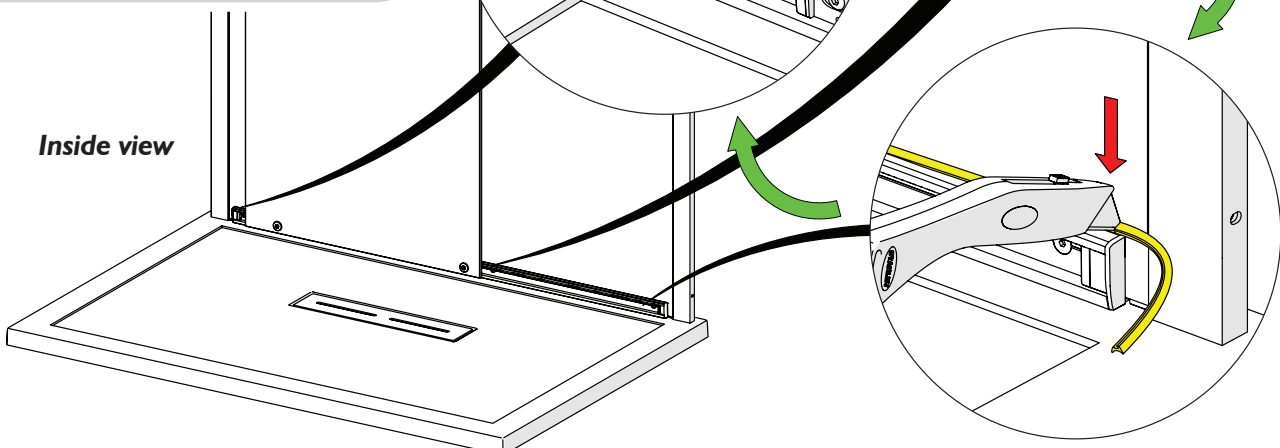
### Step 12 - Fit Handle

1. Fit outer and inner handle to door glass using long screws provided. Tighten screws using 4mm allen key provided and fit square cover caps to conceal screw heads, as shown.



### Step 13 - Fit Seal to bottom Rail

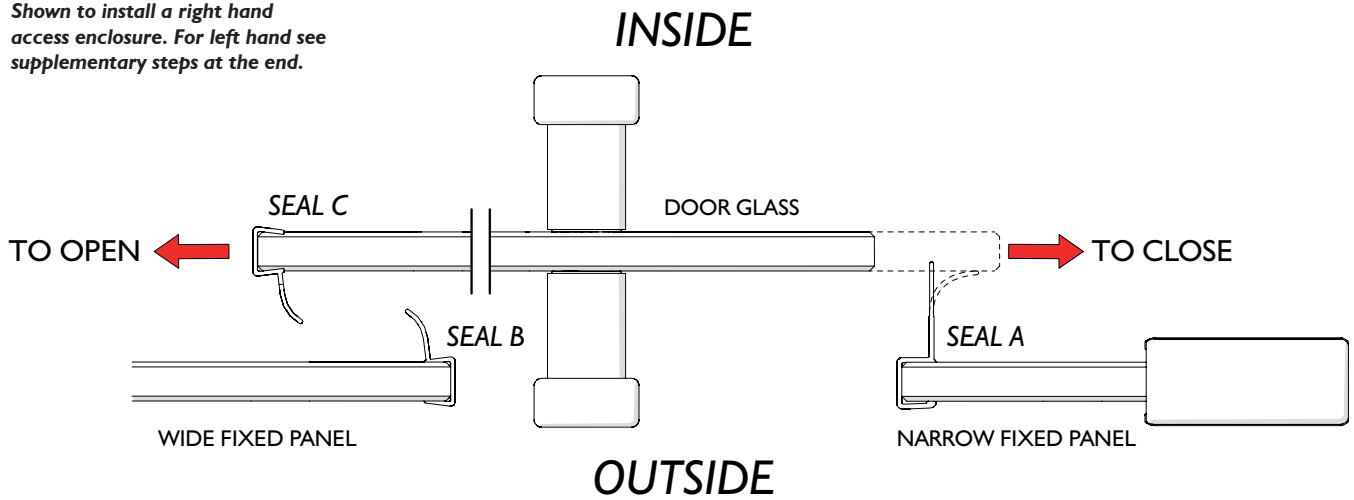
1. Acquire PLEXF-020 seal. Insert seal into recess between bottom rail and glass panel as shown. Ensure the end of the seal is tight up against the clear plastic end cap. Push into place down the rail.
2. When you get to the rail end cap carefully trim the excess length as shown using scissors/craft knife.
3. Take the excess remaining length and repeat on the other end of the bottom rail.



### Step 14 - Fit Vertical Seals

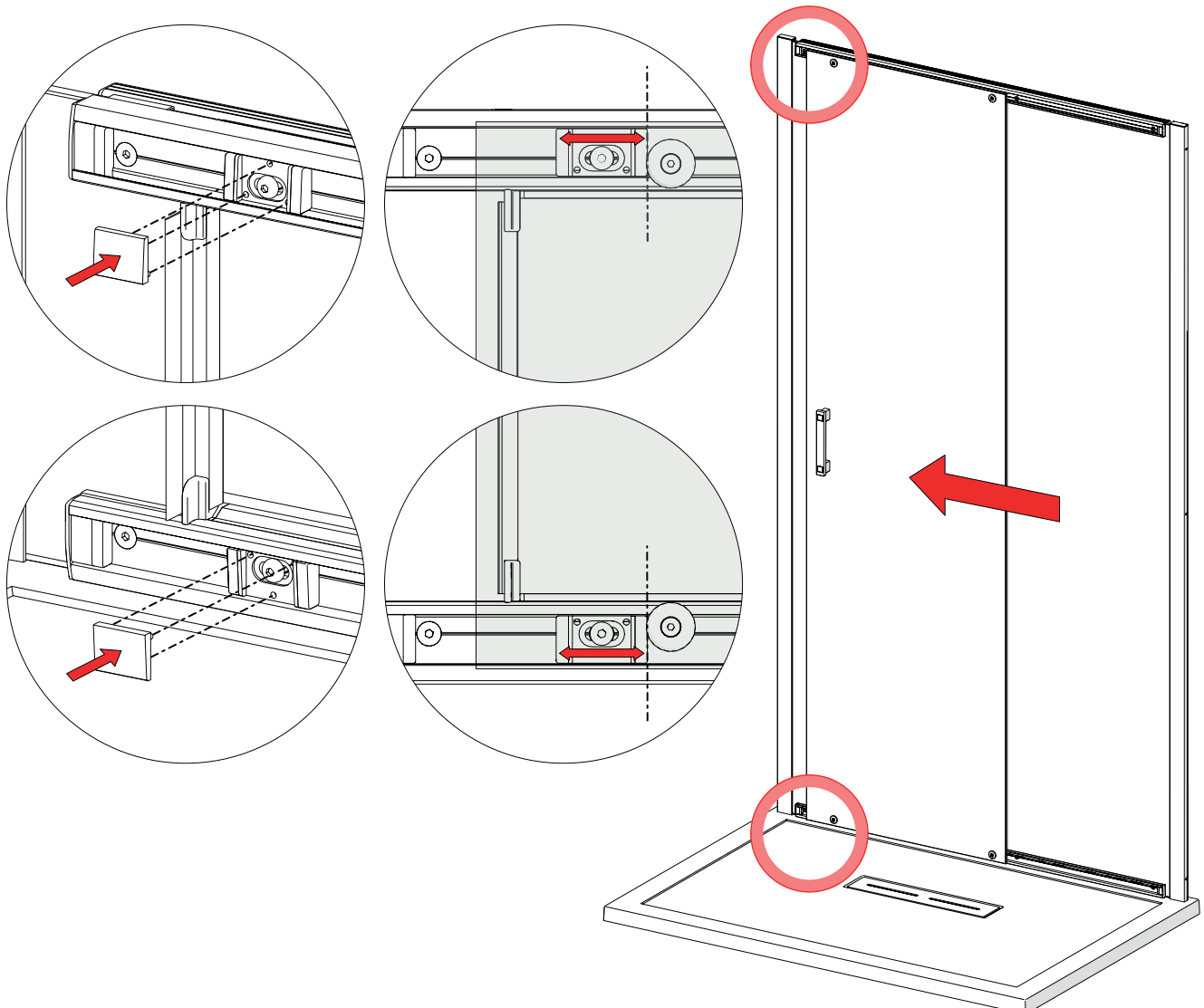
1. Fit seals to vertical edges of the glass, as shown. Seal A (1926mm) needs to go on the Narrow Fixed Panel. Seal B (1926mm) needs to go on Wide Fixed Panel. Seal C (1989mm & notched) needs to go on the door glass opening end. Ensure the two seals which fit on the fixed panels slot inside the rail clear plastic end caps at top and bottom. These seals must be fitted correctly, if not, the seals will fail prematurely.

**Shown to install a right hand access enclosure. For left hand see supplementary steps at the end.**



### Step 15 - Final Check and Adjustments

1. The door wheels should come into contact at the same time top and bottom with the stoppers when closing, to avoid causing the door to "kick". If necessary they may be adjusted up to the wheels in the closed position. Acquire the 2x Adjustable stop block covers (M130-02) from the installation pack and fit to stopper both top and bottom, as shown.



## Step 16 - Silicone

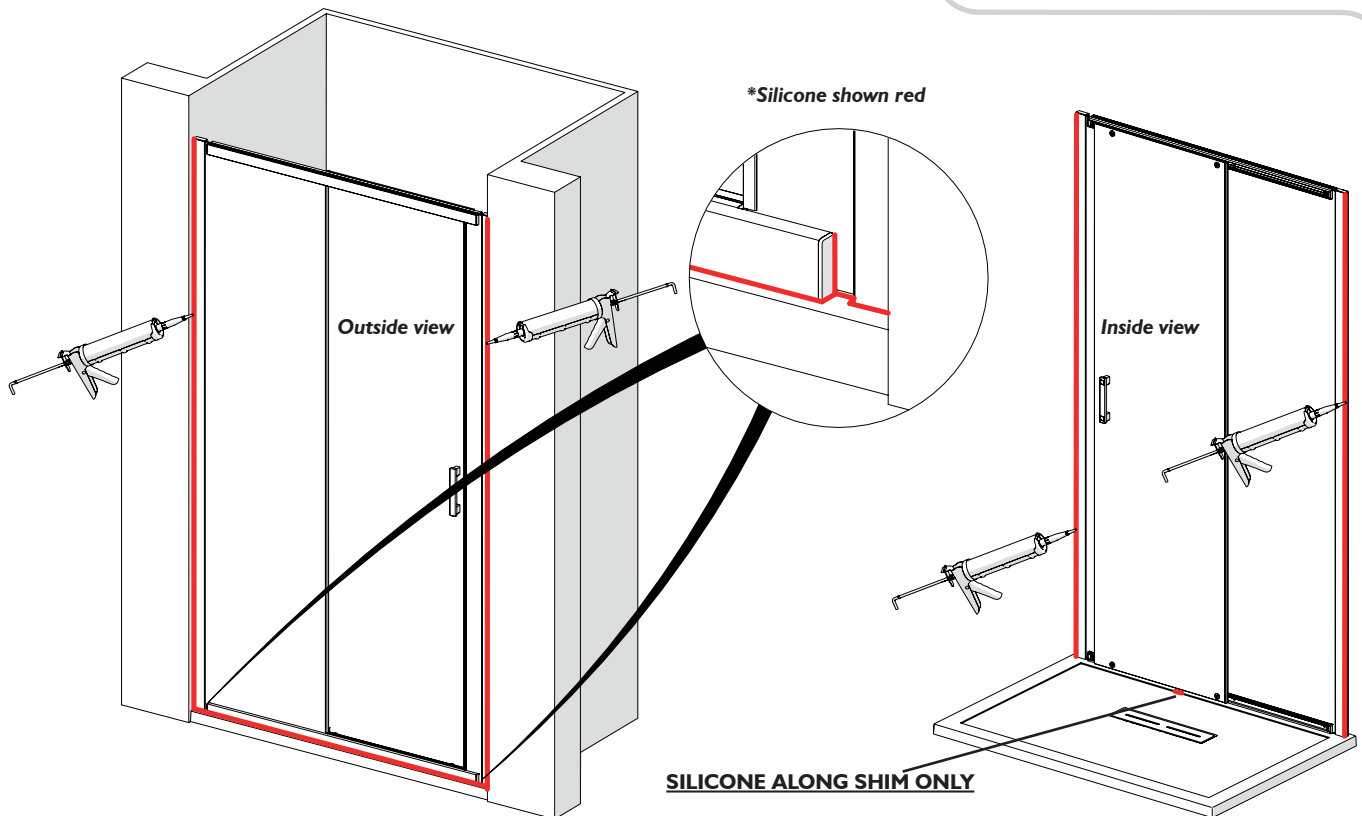
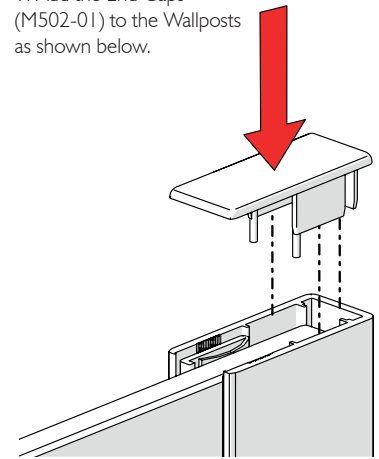
1. On the outside, silicone around all three junctions with the wall and tray, and also on the wallposts where the sill meets the uprights. Seal up both ends of bottom rail to glass panels, as shown in detail below. On the inside, only silicone along the two vertical junctions with the wall.

2. **Do not silicone seal on the inside of unit (except where shown)**. this can result in leakage problems - please note that, in use, water can penetrate into the extrusions - this has no detrimental effect to the product- however, this water must be allowed to drain out of the extrusions to the inside.

When installed correctly, Kudos guarantee the enclosure will not leak under normal showering use, ie. when the shower head is in it's normal showering position. N.B. - Using the shower head to clean/rinse down the enclosure does not constitute normal showering use.

## Step 17 - Insert Wallpost End Caps

1. Add the End Caps (M502-01) to the Wallposts as shown below.



## Step 18 - Wait 24hr

1. Allow 24 hours before using the shower.



## Supplementary Steps for Handing of the Door

### Important

THESE INSTRUCTIONS ARE FOR THE PURPOSE OF CHANGING THE SIDE FROM WHICH THE DOOR WILL OPEN SHOULD THIS BE REQUIRED. IN WHICH CASE THEY SHOULD BE FOLLOWED BEFORE PROCEEDING WITH THE INSTALLATION INSTRUCTIONS. IF YOU DO NOT REQUIRE TO CHANGE THE OPENING SIDE TO THE OPPOSITE SIDE PLEASE IGNORE THESE INSTRUCTIONS AND REFER DIRECTLY TO THE INSTALLATION INSTRUCTIONS.

### Step 7b - Fit In-Line Glass Panels

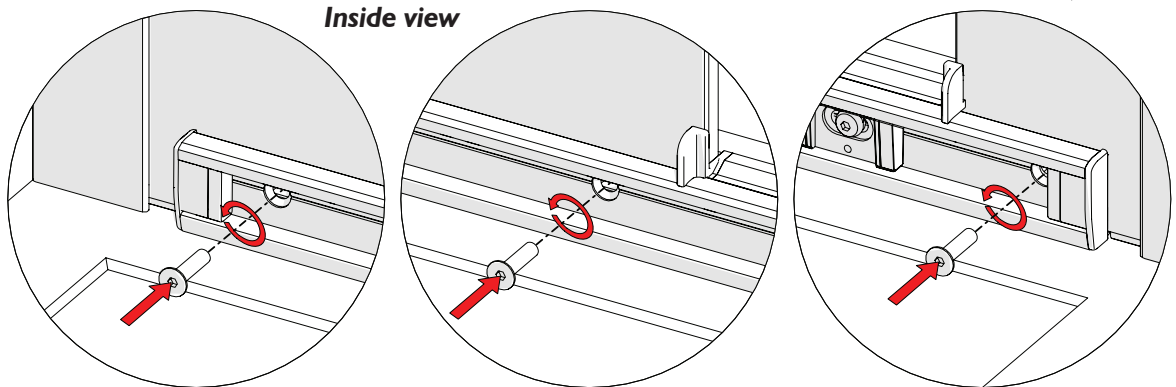
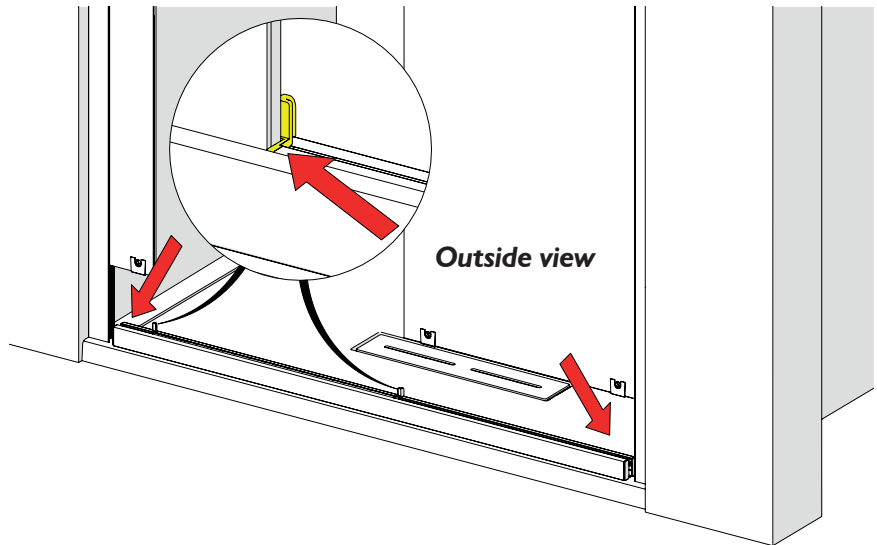
1. Depending on handing required position the correct rail onto tray centrally in between the side panel and the wallpost (**left hand access shown**).

2. Slide the wide glass panel and then down into the recess of the bottom rail then slot into the corner seal. Ensure the glass is tight up against the clear plastic end cap, as shown in yellow.

*If tight, lubricate corner seal and glass edges with a damp **CLEAN** cloth to ease fitment - the water will evaporate over a short period. **DO NOT USE** silicone spray or any other substance other than water, these will not fully dry out and will compromise the grip and rigidity of the joint.*

3. Re-insert the 2x M5 screw into the rail and tighten with the 3mm allen key.

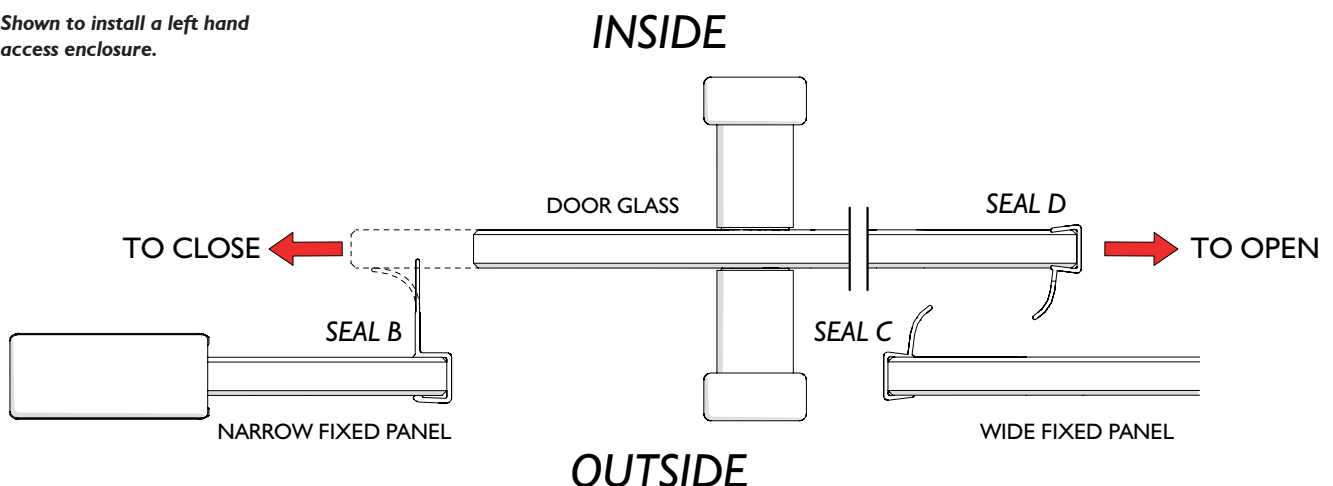
4. Slide the narrow glass panel into the slot of the wallpost and then down into the recess of the bottom rail. Ensure the glass is tight up against the clear plastic end cap, as shown in yellow. Secure rail to the panel with 2x screws.



### Step 14b - Fit Vertical Seals

1. Fit seals to vertical edges of the glass, as shown. Seal B (1926mm) needs to go on the Narrow Fixed Panel. Seal C (1926mm) needs to go on Wide Fixed Panel. Seal D (1989mm & notched) needs to go on the door glass opening end. Ensure the two seals which fit on the fixed panels slot inside the rail clear plastic end caps at top and bottom. These seals must be fitted correctly, if not, the seals will fail prematurely.

**Shown to install a left hand access enclosure.**

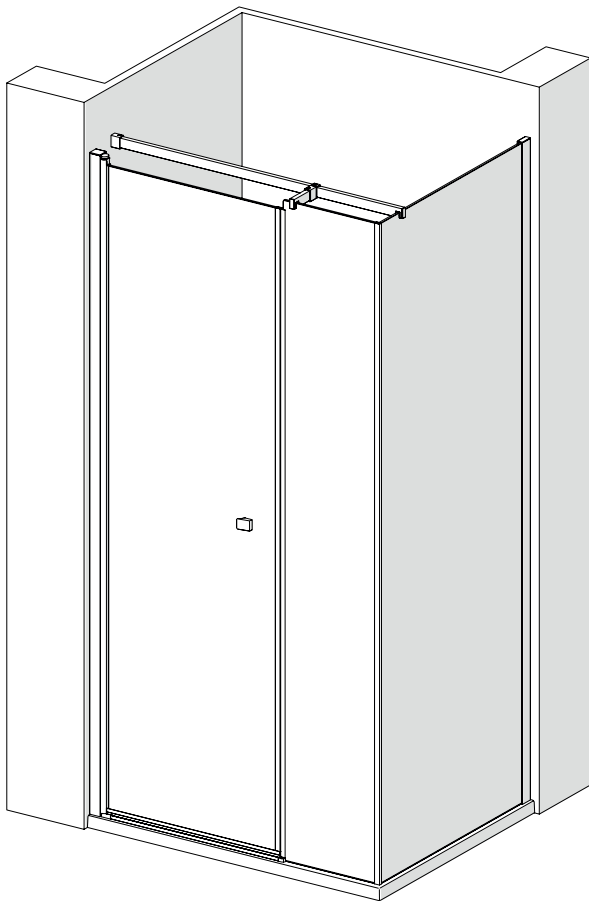




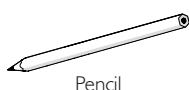
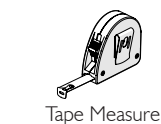
Please read these instructions throughout before installing as incorrect fitting will invalidate the guarantee.  
If you are unsure about these instructions please contact Barwick Bathroom Distribution LLP 01274 687555.

#### HEALTH & SAFETY WARNING

DUE TO THE WEIGHT & SIZE OF THE GLASS PANEL(S) A MINIMUM OF TWO PERSONS ARE REQUIRED TO MOVE AND INSTALL THIS ENCLOSURE



#### Tools Required



#### Cleaning - General

For the wall post and fixings use only warm soapy water and damp cloth/ sponge on a regular basis. After cleaning please rinse with clean water to remove any residue.

Do not use abrasive scouring powders, chemicals or aerosol cleaners - these may result in damage to the surfaces, in particular, the plated component parts.

#### Glass Treatment

The glass panels are pre-treated with a protective coating on the inside surfaces only. Whilst this makes cleaning the glass easier and helps prevent the build up of harmful lime-scale and soap deposits, the glass still needs to be maintained on a regular basis. We recommend the use of a detergent and aroma free glass cleaner (A 50/50 mix of white vinegar and water works well)

DO NOT use strong detergents, abrasive cleaners or abrasive scrubbing equipment for cleaning, these can damage the coating.

DO use a squeegee to remove remaining droplets of water from glass after showering, any build up of residue can be removed easily using an appropriate cleaner and agitation from soft cleaning equipment

#### Important

Check appearance of all product - any defects must be reported to your retailer before assembly/installation. Claims for imperfections will only be accepted prior to assembly/installation.

Any claims made under the terms of the Lifetime Guarantee must be reported to your retailer within 21 days of the fault occurring

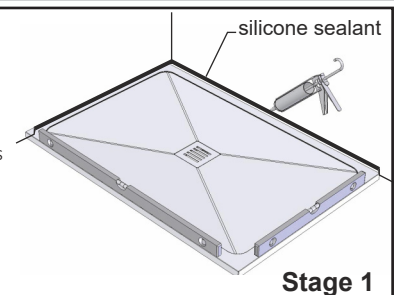
Check the enclosure adjustment sizes are suitable for your installation.

Use care when drilling into the walls to avoid hidden pipes or electric cables.

#### Shower Tray

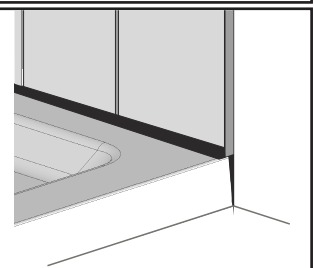
Ensure the top of shower tray is LEVEL in ALL directions.

Once the tray is installed but before the wall tiles are fitted, any gap between the tray and the walls must be filled with silicone sealant flush with the top of the tray.



Once the walls have been tiled but before the enclosure is installed, the tiles must be silicone sealed to the tray all of the way around in one continuous bead.

**Failure to follow these instructions will result in leakage problems.**



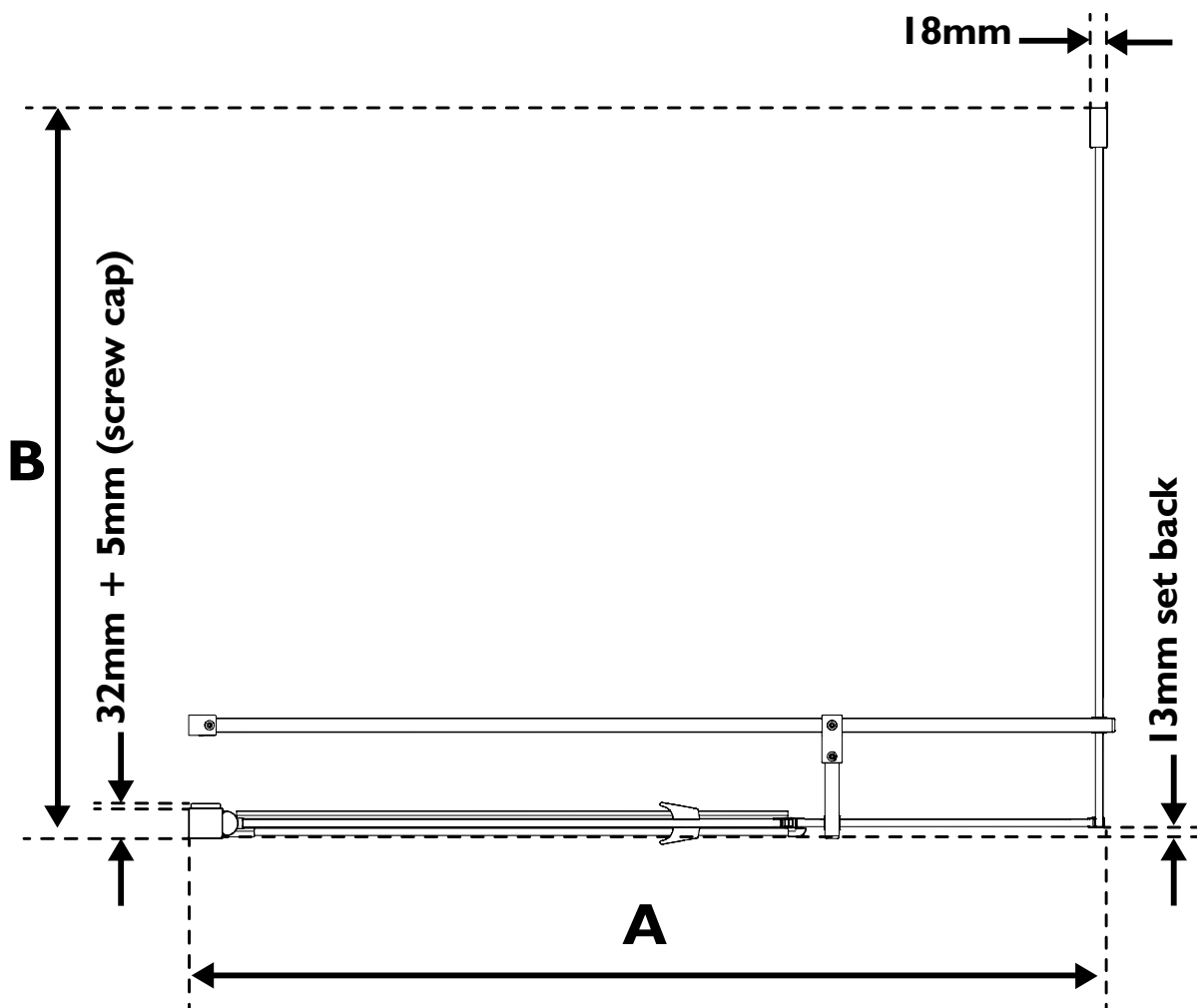
**THESE INSTRUCTIONS ARE TO BE LEFT WITH THE CONSUMER**

Product Sizes and Adjustments

PRODUCT	PACK CODES		DIMENSIONS (mm)
PIVOT	CORNER IN-LINE PANEL PACK	DOOR PACK	<b>A</b>
<b>800</b>	PEV1(C/BK)	PEVX(C/BK)	775 to 795
<b>900</b>	PEV2(C/BK)	PEVX(C/BK)	875 to 895
<b>1000</b>	PEV3(C/BK)	PEVX(C/BK)	975 to 995
<b>1200</b>	PEV4(C/BK)	PEVX(C/BK)	1175 to 1195
<b>1400</b>	PEV5(C/BK)	PEVX(C/BK)	1375 to 1395

PRODUCT	PACK CODES	DIMENSIONS (mm)
SIDE PANEL	SIDE PANEL PACK	<b>B</b>
<b>760</b>	EVSP76	735 to 755
<b>800</b>	EVSP8	775 to 795
<b>900</b>	EVSP9	875 to 895

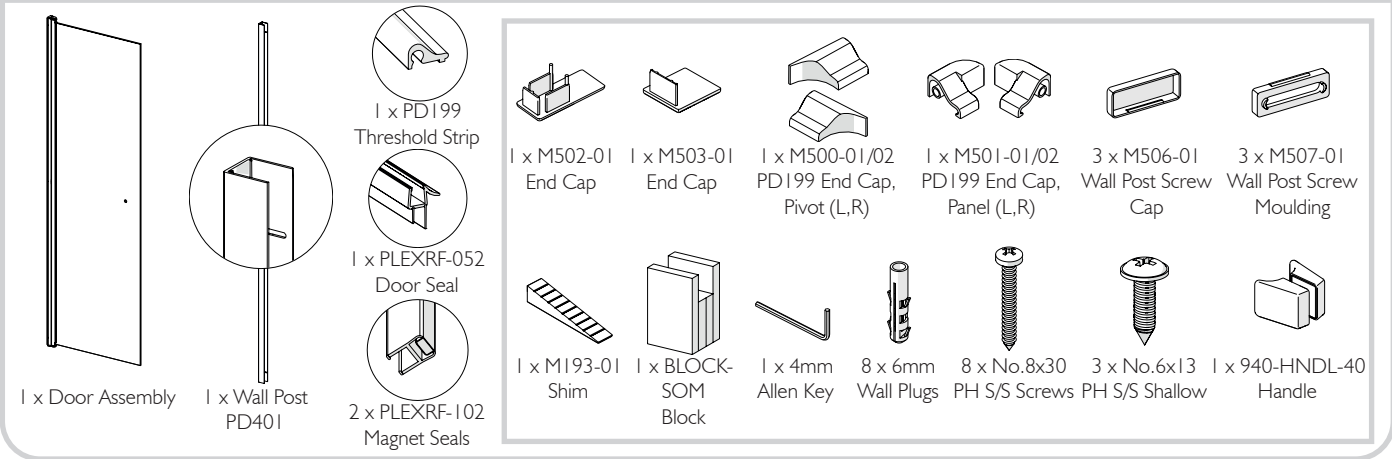
**ENCLOSURE HEIGHT = 2000mm**



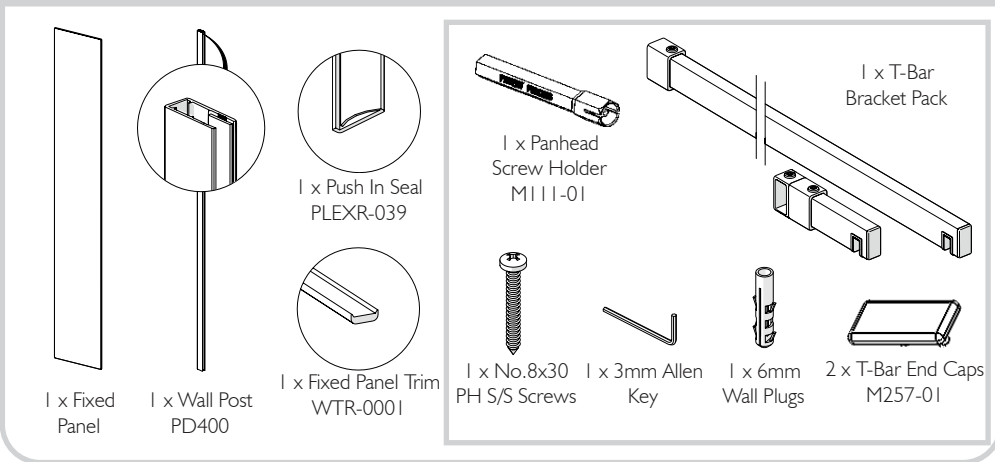
*Left Hand Configuration Shown*

## Parts List

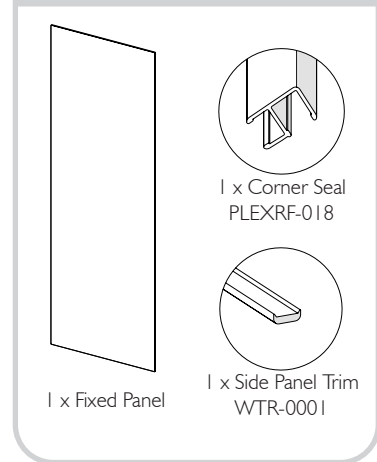
### Door Pack for Recess & Corner



### Inline Panel for Corner



### Side Panel for Corner



## Installation Steps

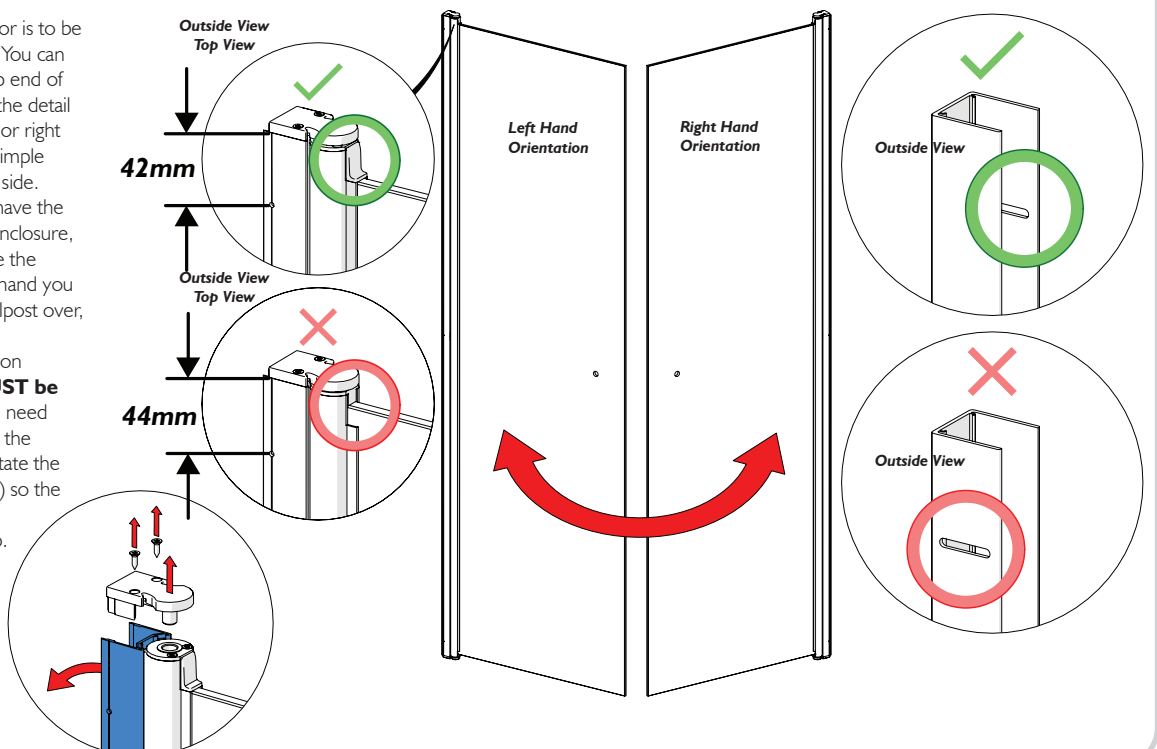
### Step 1 - Decide Handing of Door

1. Determine whether door is to be left or right hand opening. You can determine which is the top end of the Door Assembly using the detail shown. To make left hand or right hand the Door assembly simple needs to be flipped to the side.

2. The wallpost needs to have the slots on the inside of the enclosure, as shown in detail. To make the wallpost left hand or right hand you simply need to flip the wallpost over, as shown.

3. Check the hole dimension distance at the top. **It MUST be 42mm.** If it's 44mm you'll need to remove the top cast via the two CSK screws. Then rotate the extrusion (highlighted blue) so the hole that is 42mm from the edge is at the top.

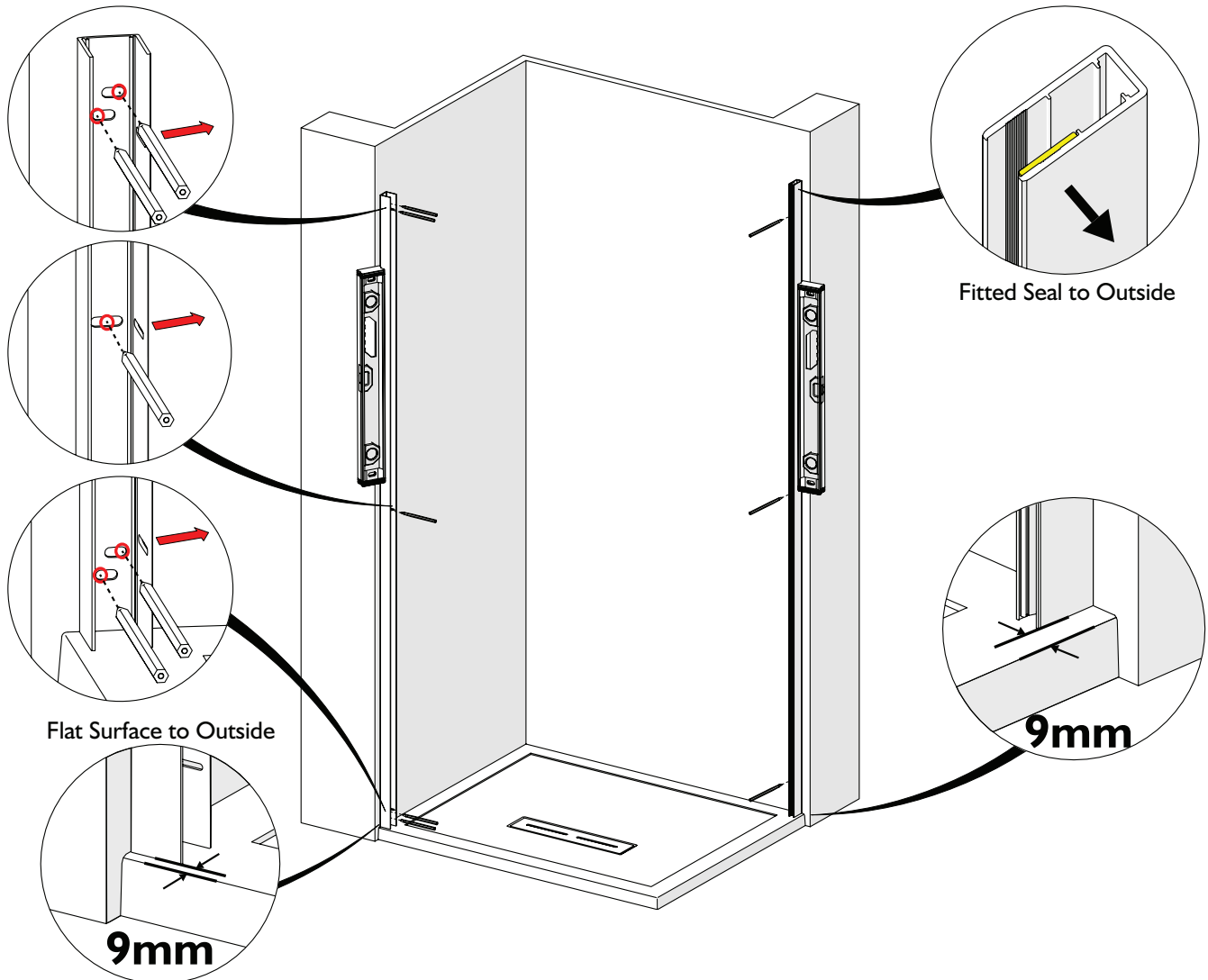
*Detail shown for a left hand configuration.*





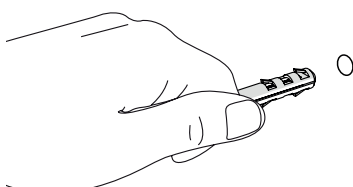
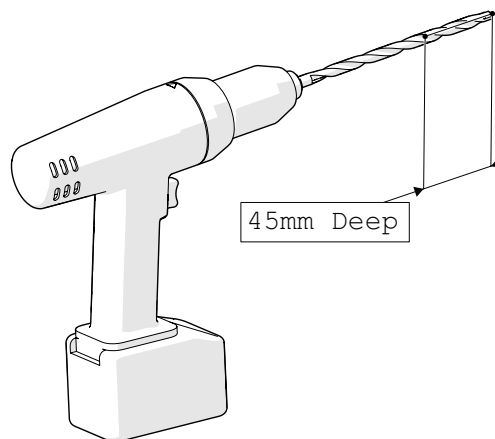
## Step 2 - Position and Mark Wallposts

1. Position wallpost for door (with side slots to inside) 9mm in from front edge of tray, as shown below. Using spirit level to ensure wallpost is vertical, mark through the 5 slots onto the wall surface as shown and remove wallpost. Important to mark the holes as indicated in red below, to the ends of the slots.
2. Position side panel wallpost (with fitted seal to outside) 9mm in from front edge of tray, as shown below. Using spirit level to ensure wallpost is vertical, mark through the 3 slotted holes onto the wall surface and remove wallpost.



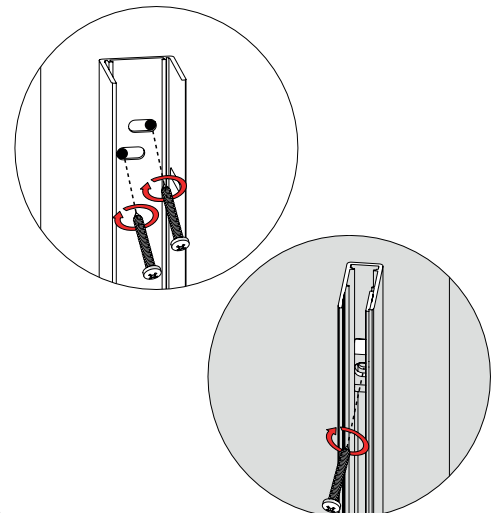
## Step 3 - Drill Mounting Holes

1. Remove the wallposts. Placing safely off to one-side.
2. Using a 7mm masonry drill bit and drill (or appropriate drill bit if drilling tiles), drill five holes for the door wallpost and three holes for the inline panel wallpost using the 'spot' marks from step 2, each hole should be 45mm in depth.
3. Insert the six '8mm Wall Plugs' into the eight holes.



## Step 4 - Fix Wallposts

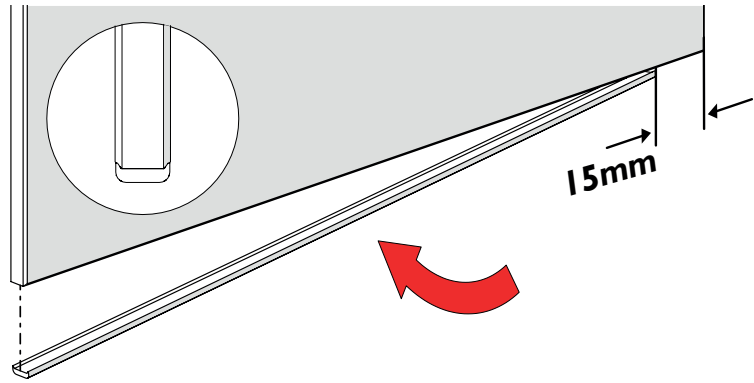
1. Fix wallposts using 8 x No.8x30 PH S/S Screws provided. Tighten all screws using pozi-head screwdriver, ensuring the wallpost is vertical.



### Step 5 - Fit Bottom Trim To Side Panel

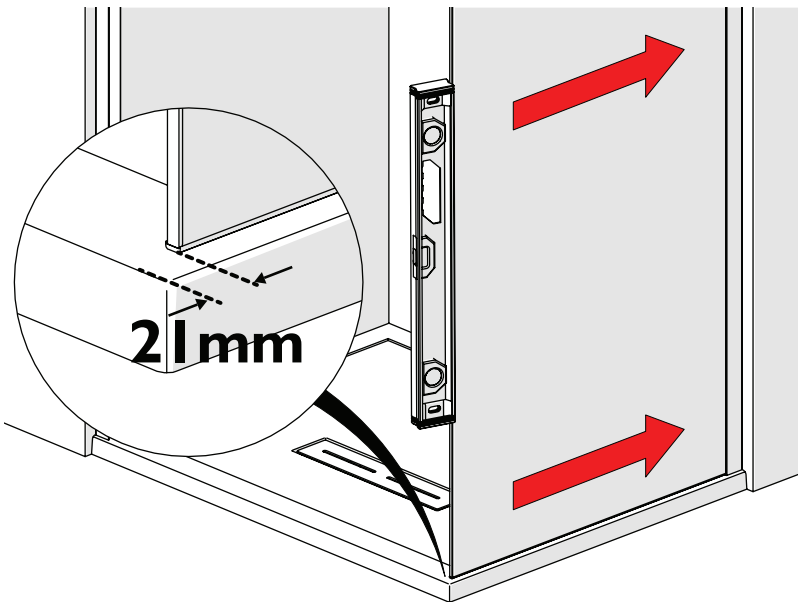
1. Take note of label **'This surface to outside'** this will determine which is the bottom edge of your installation.
2. Acquire the WTR-0001 Trim from the Side Panel Pack. Peel off a small length of the bottom trim adhesive tape and apply to bottom of glass panel 15mm from the end that will be going into the wallpost, as shown. Continue along length of trim, peeling away the tape as you go, until the full trim length is adhered to the panel.

Use small upturned edges on bottom trim against chamfered glass edges to ensure trim is fitted centrally.



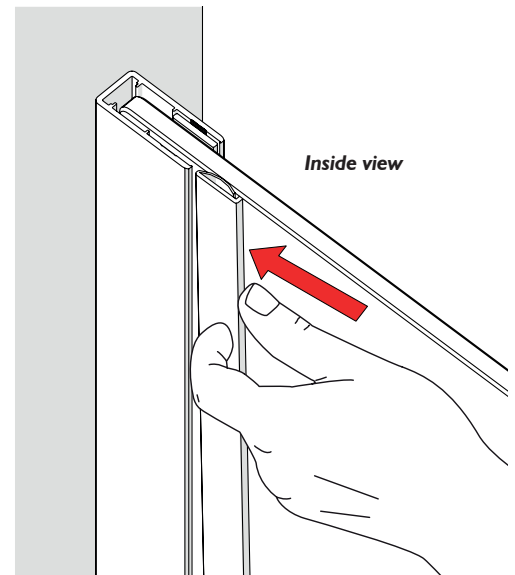
### Step 6 - Fit Side Panel

1. Carefully fit glass side panel into slot in wallpost, ensuring panel is parallel to tray edge.
2. Position outer edge of side panel **21mm** back from the front edge of tray, as shown. **Ensure factory drawn lines on side panel glass do not extend beyond front face of wallpost.**
3. Ensure outer edge of side panels vertical, as shown, using spirit level.



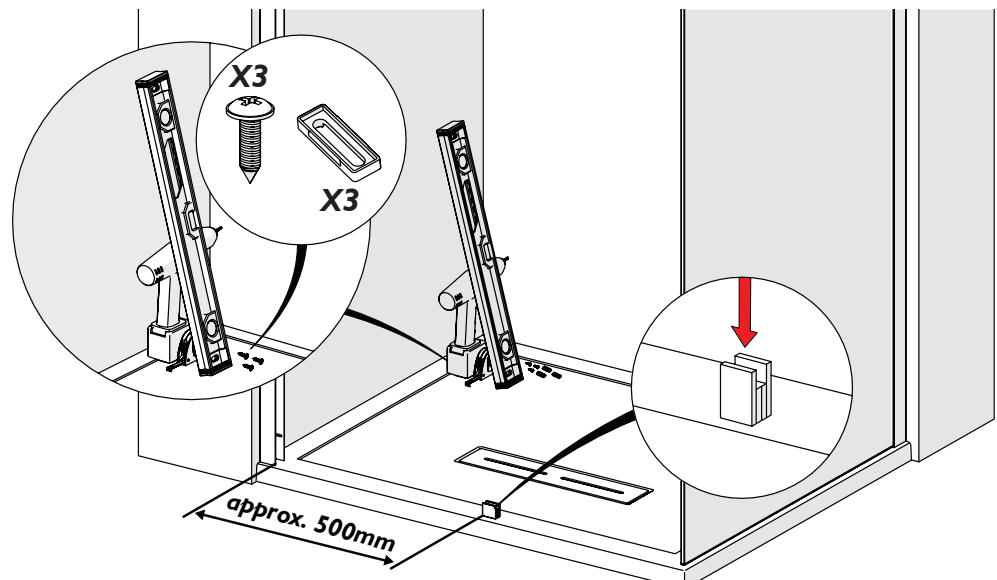
### Step 7 - Insert Push-In Seal

1. Take 'Push-In Seal (PLEXR-039),' Insert the seal to the inside of the enclosure, between the side glass panel and lip of the metal on post, ensuring the curved surface is contacting the glass. Start at the top and work downward, until the seal is fully inserted all the way down the panel, if tight, lubricate the seal with water.



### Step 8 - Preparation To Install Door Assembly

1. Place your drill, spirit level, tape measure, 3 x No.6x13 PH S/S Shallow and 3 x M507-01 (from the Door Installation Pack) inside the enclosure in the corner as shown. **Ensure the tray is adequately protected beforehand.**
2. Acquire 'BLOCK' (BLOCK-SOM) from the Door Installation Pack and place as shown roughly 500mm from the Door Wallpost.

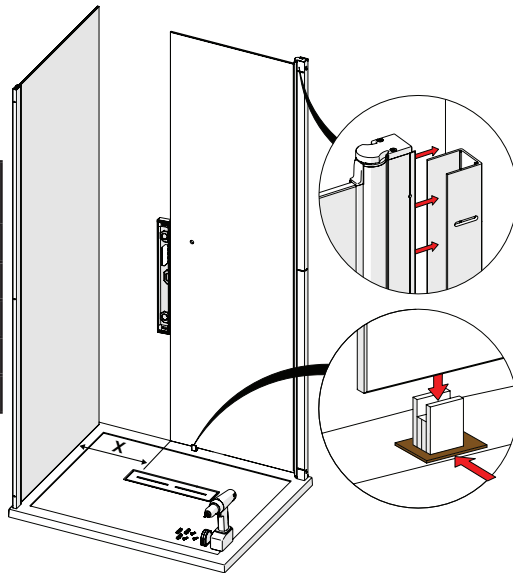


### Step 9 - Position Door Assembly

1. Carefully fit Door Glass Assembly into wallpost. Slot the glass into the 'BLOCK' already positioned, as shown. This will take the weight of the door. **Use your level to make sure the door edge is 'plumb' vertical. If not 'plumb' vertical use additional packing (e.g cardboard) to raise the 'Packer', as shown.**

2. Position vertical edge of the Door Glass 'X' mm to the In-Line Panel wallpost, as shown - refer to table to the below.

Door Size (nominal)	'X' Dimension
800	134
900	234
1000	334
1200	534
1400	734

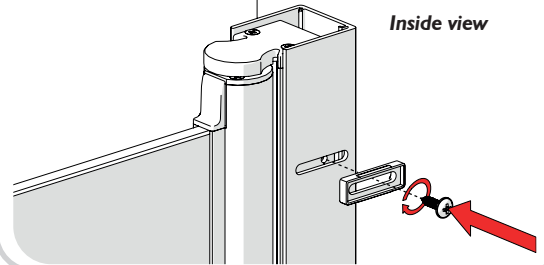


### Step 10 - Fix Door Assembly

1. Take the three 'Wallpost Screw Mouldings' from the Door Installation Pack and place them into the slots on the Door Wallpost from the inside of the enclosure, as shown.

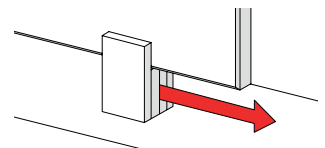
2. Fix the door Assembly in position using the 3 x No.6x13 PH S/S Shallow, as shown.

*Note: if you find the brush seal isn't in contact with the pivot barrel simply loosen the middle screw and level outwards the inner profile until the brush seal makes contact with the barrel. Retighten screw.*



### Step 11 - Remove Door 'Packer'

1. Remove 'Packer' from under the Door Glass by sliding out, as shown below. Do not discard.



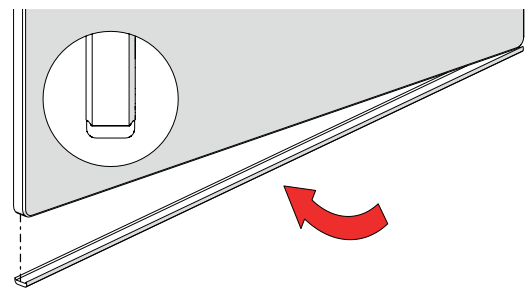
### Step 12 - Fit Bottom Trim To In-Line Panel

1. Take note of label **'This surface to outside'** this will determine which is the bottom edge of your installation.

2. Clean glass edge, then make sure it's completely dry.

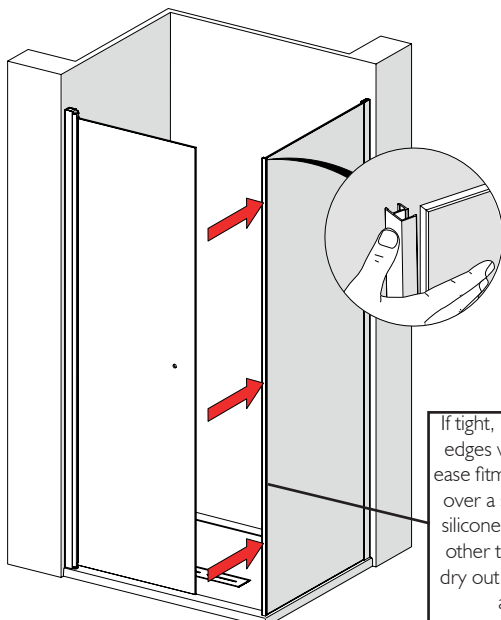
3. Acquire the WTR-0001 Trim from the In-line Panel Corner Pack. Peel off a small length of the bottom trim adhesive tape and apply to bottom up to the vertical edge. Continue along length of trim, peeling away the tape as you go, until the full trim length is adhered to the panel.

Use small upturned edges on bottom trim against chamfered glass edges to ensure trim is fitted centrally.



### Step 13 - Fit Glass to Glass Corner Seal

1. Fit glass to glass corner seal to edge of side glass panel. Note orientation of seal. Make sure the seal is fully inserted from top to bottom, use your thumb to apply pressure, as shown.

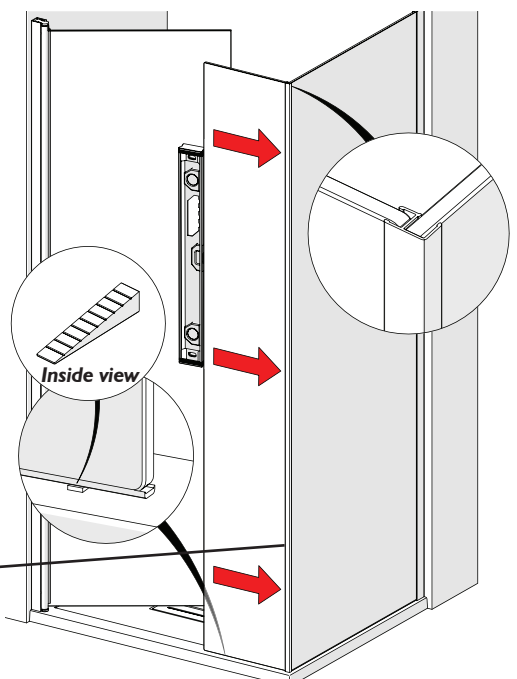


### Step 14 - Fit In-line Panel

1. Carefully insert the In-line Panel into corner seal, ensuring panel is parallel to tray edge.

2. Ensure In-line Panel is square to first panel. Corner seal must be fully inserted onto both panels.

3. Ensure outer edge of side panel is vertical, as shown, using spirit level. Often shower trays have different angled top faces, in order to help keep the glass supported use the 'Shim (M193-01)' supplied. **On the inside** of the enclosure measure the gap between the bottom of the glass and top of the tray, select the height required from the shim strip supplied, break off and insert under rail. The shim will be concealed by silicone sealant later.



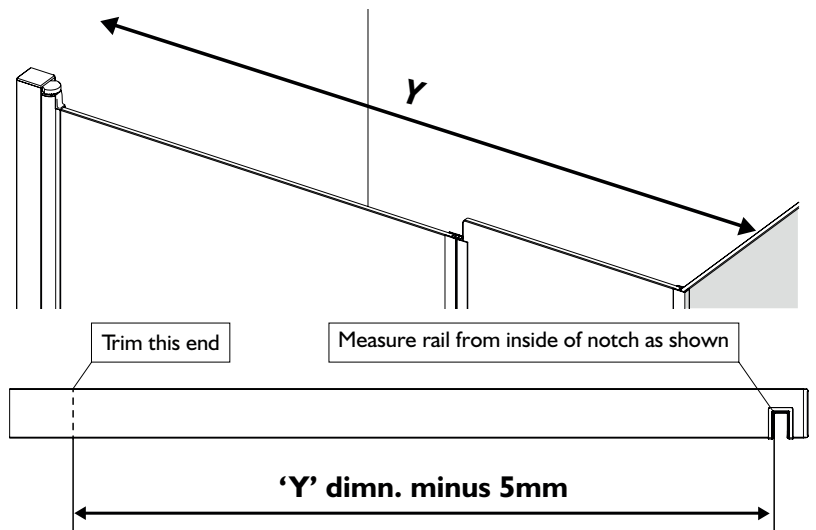
If tight, lubricate corner seal and glass edges with a damp **CLEAN** cloth to ease fitment - the water will evaporate over a short period. **DO NOT USE** silicone spray or any other substance other than water, these will not fully dry out and will compromise the grip and rigidity of the joint.

### Step 15 - Trim Stabiliser Rail (if required)

1. Measure distance from **INSIDE** face of side panel to side wall, as shown. Deduct **5mm** from this measurement and transfer this to the stabiliser rail.

Example: 'Y' = 760mm minus 5mm = 755 to mark on rail

2. Carefully trim stabiliser to length using hacksaw.



### Step 16 - Fitting Rail

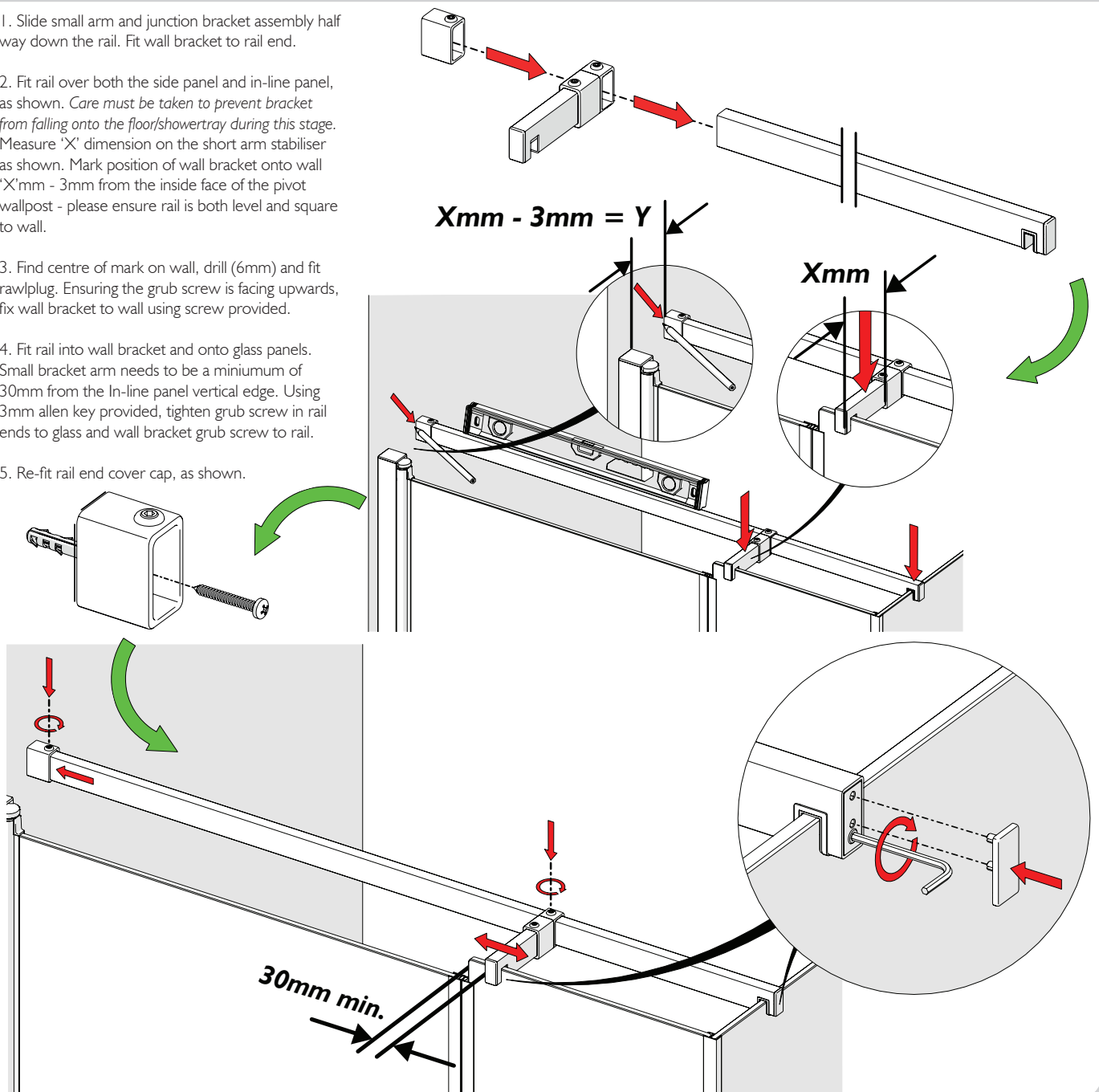
1. Slide small arm and junction bracket assembly half way down the rail. Fit wall bracket to rail end.

2. Fit rail over both the side panel and in-line panel, as shown. *Care must be taken to prevent bracket from falling onto the floor/showertray during this stage.* Measure 'X' dimension on the short arm stabiliser as shown. Mark position of wall bracket onto wall 'X' mm - 3mm from the inside face of the pivot wallpost - please ensure rail is both level and square to wall.

3. Find centre of mark on wall, drill (6mm) and fit rawplug. Ensuring the grub screw is facing upwards, fix wall bracket to wall using screw provided.

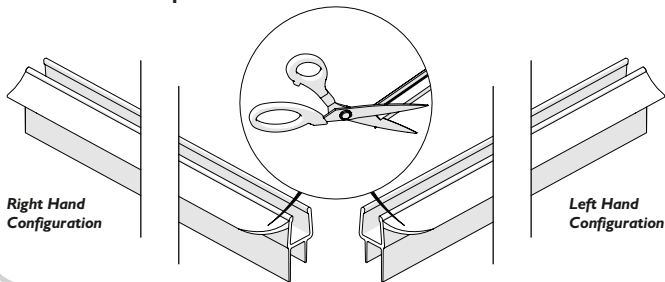
4. Fit rail into wall bracket and onto glass panels. Small bracket arm needs to be a minimum of 30mm from the In-line panel vertical edge. Using 3mm allen key provided, tighten grub screw in rail ends to glass and wall bracket grub screw to rail.

5. Re-fit rail end cover cap, as shown.



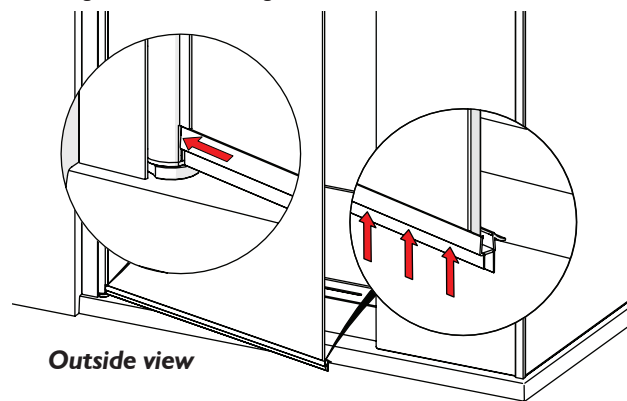
### Step 17 - Prepare Door Seal PLEXRF-052

1. Acquire PLEXRF-052 from the Door Pack. Cut the corners of the rigid flipper at 45 degree angle, as shown below. Using adequate scissors. **Make sure there are no sharp corners. Cut a smooth curve.**



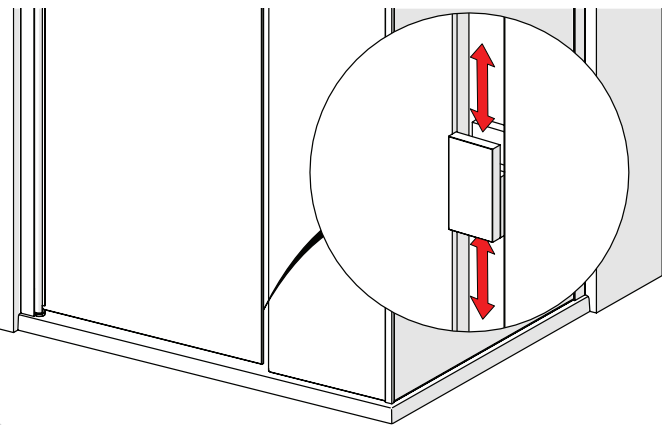
### Step 18 - Add Door Seal PLEXRF-052

1. Add the prepared Door Seal PLEXRF-052 to the bottom edge of the Door. Orientation as shown, with the water ramp on the inside of the enclosure. Makes sure the seal runs right up to the Pivot Barrel. The seal will over hang the end of the door glass, as shown.



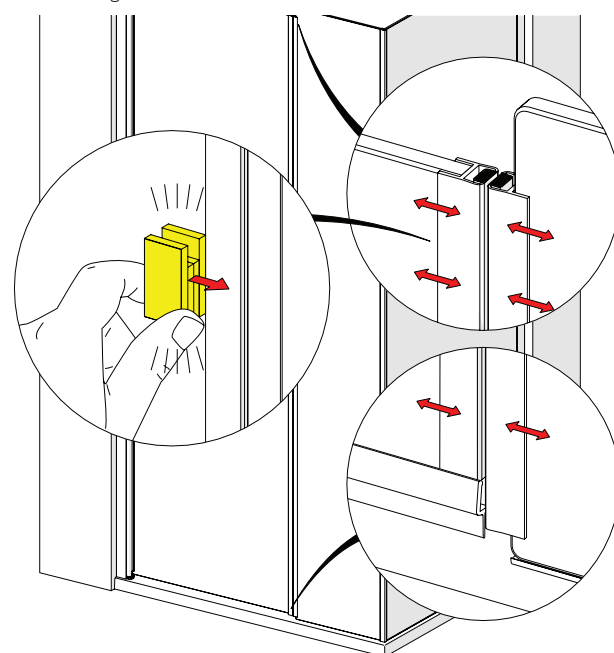
### Step 19 - Check Glass Spacing

1. Acquire the 'BLOCK' previously removed in step 11. Insert between glass door and in-line panels to ensure there is an adequate gap between the two (18mm), as shown. 'BLOCK' needs to be able to freely move up and down inbetween the two glass panels. If the gap needs to be adjusted, simply adjust the door position by adjusting the screws, see step 10. **Be careful as to not let the door fall into the in-line panel when adjusting the screws.** Remove 'packer' when satisfied.



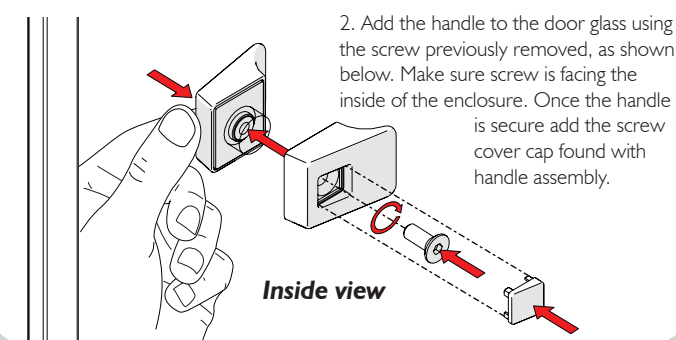
### Step 20 - Add Magentic Seals

1. Acquire 2 X PLEXRF-102 magnet seals from pack and add to the door glass and fixed panel glass, as shown below. Both seals need to be in line with the top edge of the door glass, as shown. **Magent seals should attract and sit flush together. If not, you'll need to rotate one of the seals 180 degrees.** Adjust the seals like the arrows shown below to set the magnet strength to your preference. Use the previously used 'BLOCK' (highlighted yellow) to adjust the seal by tapping the edge of the seals on the glass.



### Step 21 - Fit Handle

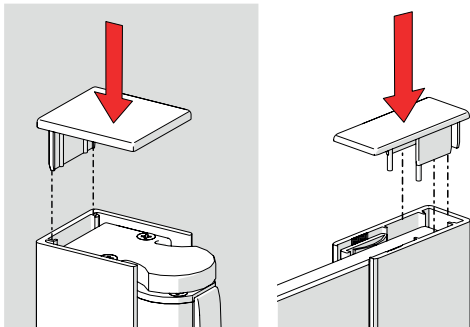
1. Acquire the Handle (940-HNDL-40) out of the Door Installation Pack. Separate the handle halves by removing the screw, using 4mm allen key provided.



2. Add the handle to the door glass using the screw previously removed, as shown below. Make sure screw is facing the inside of the enclosure. Once the handle is secure add the screw cover cap found with handle assembly.

### Step 22 - Insert Wallpost End Caps

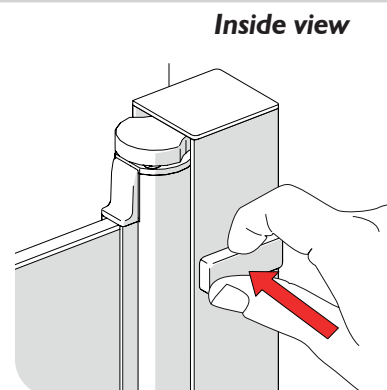
1. Add the End Caps (M503-01 & M502-01) to the Wallposts as shown below.



### Step 23 - Insert Screw Mouldings

1. Take the three 'Wall Post Screw Caps' from the Door Installation Pack and place over the 'Wallpost Screw Mouldings' previously fitted in step 10. The 'Wall Post Screw Caps' can be easily removed if you ever need to make an adjustment of the Door position.

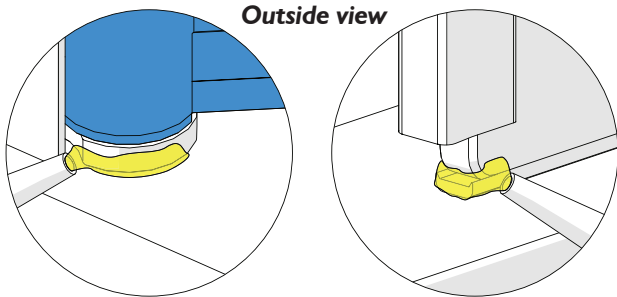
**The screw caps maybe fitted after step 25 to make silicone process easier.**



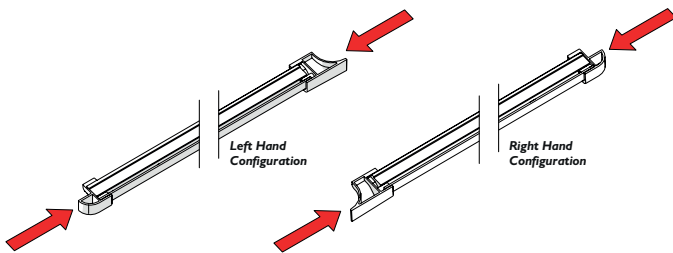
## Step 24 - Silicone and Apply Water Threshold Strip

**Before carrying out these last steps make sure you are happy with the door function. Won't be able to adjust after silicone is applied.**

1. Apply a small bead of silicone to the Fixed Panel bottom edge and the Pivot Base Cast, as shown and highlighted yellow below. This is where the threshold strip end caps are going to fit. Make sure silicone doesn't come into contact with the Pivot Door Barrel, highlighted blue below.

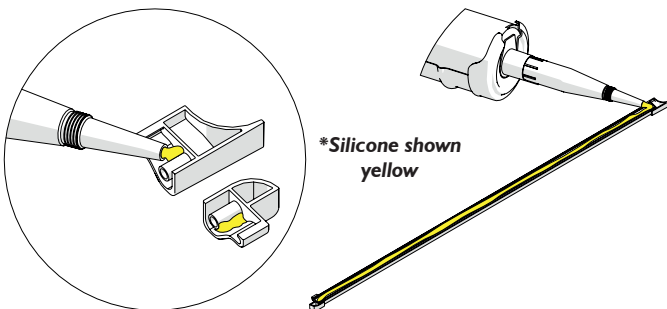


2. Configure the Threshold Strip (PD199) in either the Left or Right Configuration depending on the handing of your door.

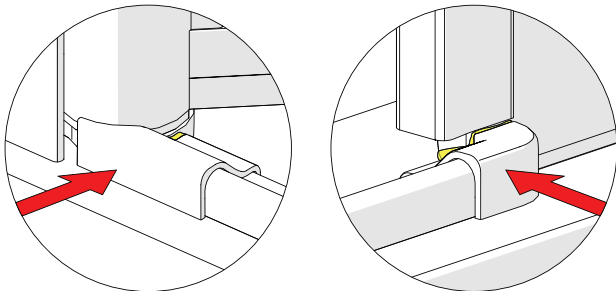


3. Silicone the end caps being used. Silicone a 'pea' sized amount, as shown.

4. Insert the end caps to the Threshold Extrusion ends and silicone the underside of the threshold strip, as shown. Use a thin small amount of silicone.



5. Carefully add the siliconed strip into position, as shown. Make sure the end caps touch up to the inline panel and the Door Pivot Barrel.



## Step 26 - Wait 24hr

1. Allow 24 hours before using the shower.



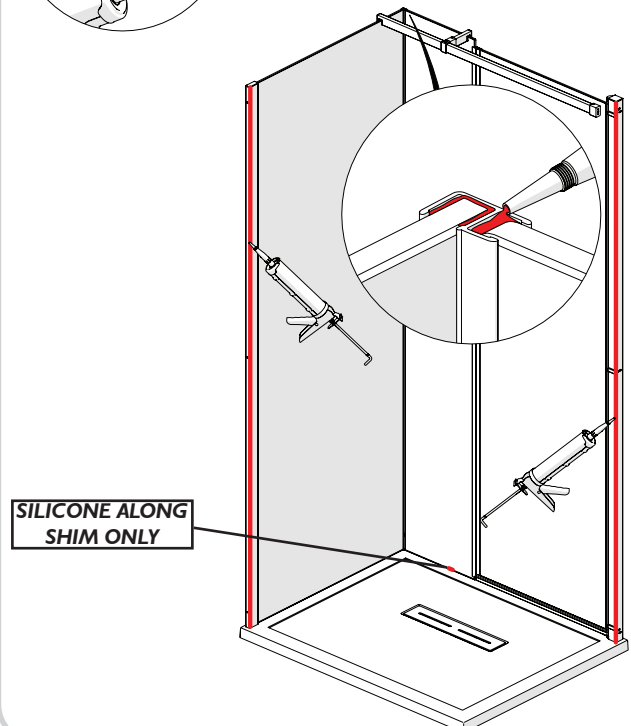
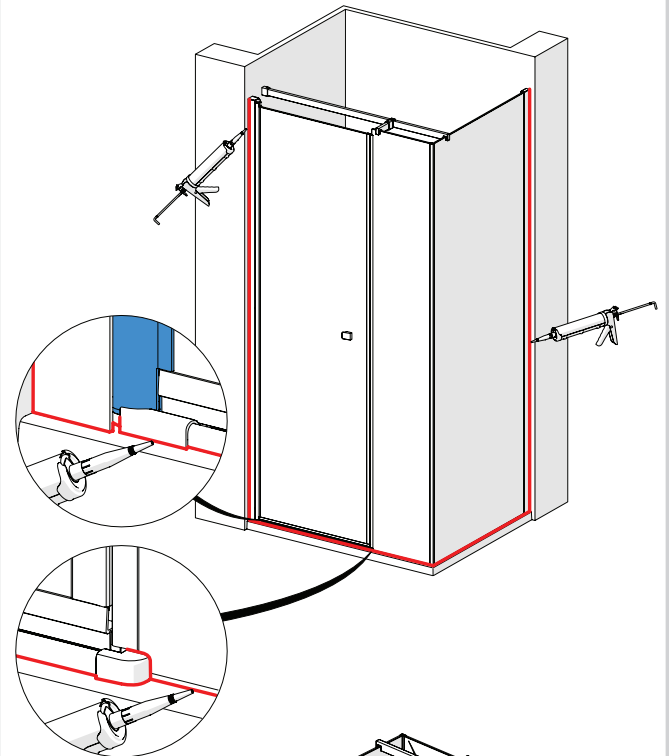
## Step 25 - Silicone

1. On the outside, silicone around all three junctions with the wall and tray, and also on the wallposts where the sill meets the uprights. On the inside, only silicone along the two vertical junctions with the wall. **Do not silicone seal on the inside of unit (except where shown).** Sealing the wall posts to the tray on the inside can result in leakage problems - please note that, in use, water can penetrate into the extrusions - this has no detrimental effect to the product- however, this water must be allowed to drain out of the extrusions to the inside.

Make sure silicone doesn't come into contact with the Pivot Door Barrel, highlighted blue below. As this is the mechanism by which the door pivots. Silicone the water threshold and end caps, as shown.

2. Apply a small bead of sealant to top of corner seal to prevent ingress of dirt between seal and glass panels, as shown.

When installed correctly, Kudos guarantee the enclosure will not leak under normal showering use, ie. when the shower head is in it's normal showering position. N.B. - Using the shower head to clean/rinse down the enclosure does not constitute normal showering use.



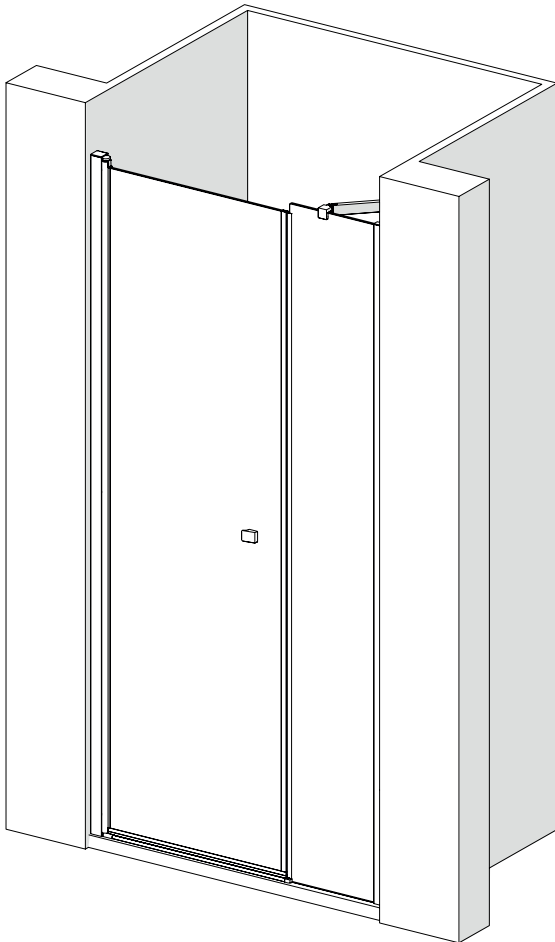




Please read these instructions throughout before installing as incorrect fitting will invalidate the guarantee.  
If you are unsure about these instructions please contact Barwick Bathroom Distribution LLP 01274 687555.

#### HEALTH & SAFETY WARNING

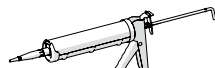
DUE TO THE WEIGHT & SIZE OF THE GLASS PANEL(S) A MINIMUM OF TWO PERSONS ARE REQUIRED TO MOVE AND INSTALL THIS ENCLOSURE



#### Tools Required



Pozzi-head Screwdriver



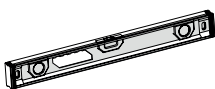
Clear Silicone Sealant



7mm Masonry Drill Bit



Drill (Battery or Mains)



Spirit Level



Tape Measure



Scissors



Pencil

#### Cleaning - General

For the wall post and fixings use only warm soapy water and damp cloth/ sponge on a regular basis. After cleaning please rinse with clean water to remove any residue.

Do not use abrasive scouring powders, chemicals or aerosol cleaners - these may result in damage to the surfaces, in particular, the plated component parts.

#### Glass Treatment

The glass panels are pre-treated with a protective coating on the inside surfaces only. Whilst this makes cleaning the glass easier and helps prevent the build up of harmful lime-scale and soap deposits, the glass still needs to be maintained on a regular basis. We recommend the use of a detergent and aroma free glass cleaner (A 50/50 mix of white vinegar and water works well)

DO NOT use strong detergents, abrasive cleaners or abrasive scrubbing equipment for cleaning, these can damage the coating.

DO use a squeegee to remove remaining droplets of water from glass after showering, any build up of residue can be removed easily using an appropriate cleaner and agitation from soft cleaning equipment

#### Important

Check appearance of all product - any defects must be reported to your retailer before assembly/installation. Claims for imperfections will only be accepted prior to assembly/installation.

Any claims made under the terms of the Lifetime Guarantee must be reported to your retailer within 21 days of the fault occurring

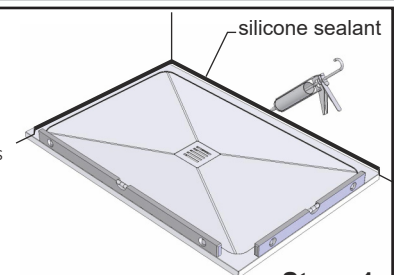
Check the enclosure adjustment sizes are suitable for your installation.

Use care when drilling into the walls to avoid hidden pipes or electric cables.

#### Shower Tray

Ensure the top of shower tray is LEVEL in ALL directions.

Once the tray is installed but before the wall tiles are fitted, any gap between the tray and the walls must be filled with silicone sealant flush with the top of the tray.



Stage 1

Once the walls have been tiled but before the enclosure is installed, the tiles must be silicone sealed to the tray all of the way around in one continuous bead.

**Failure to follow these instructions will result in leakage problems.**



Stage 2

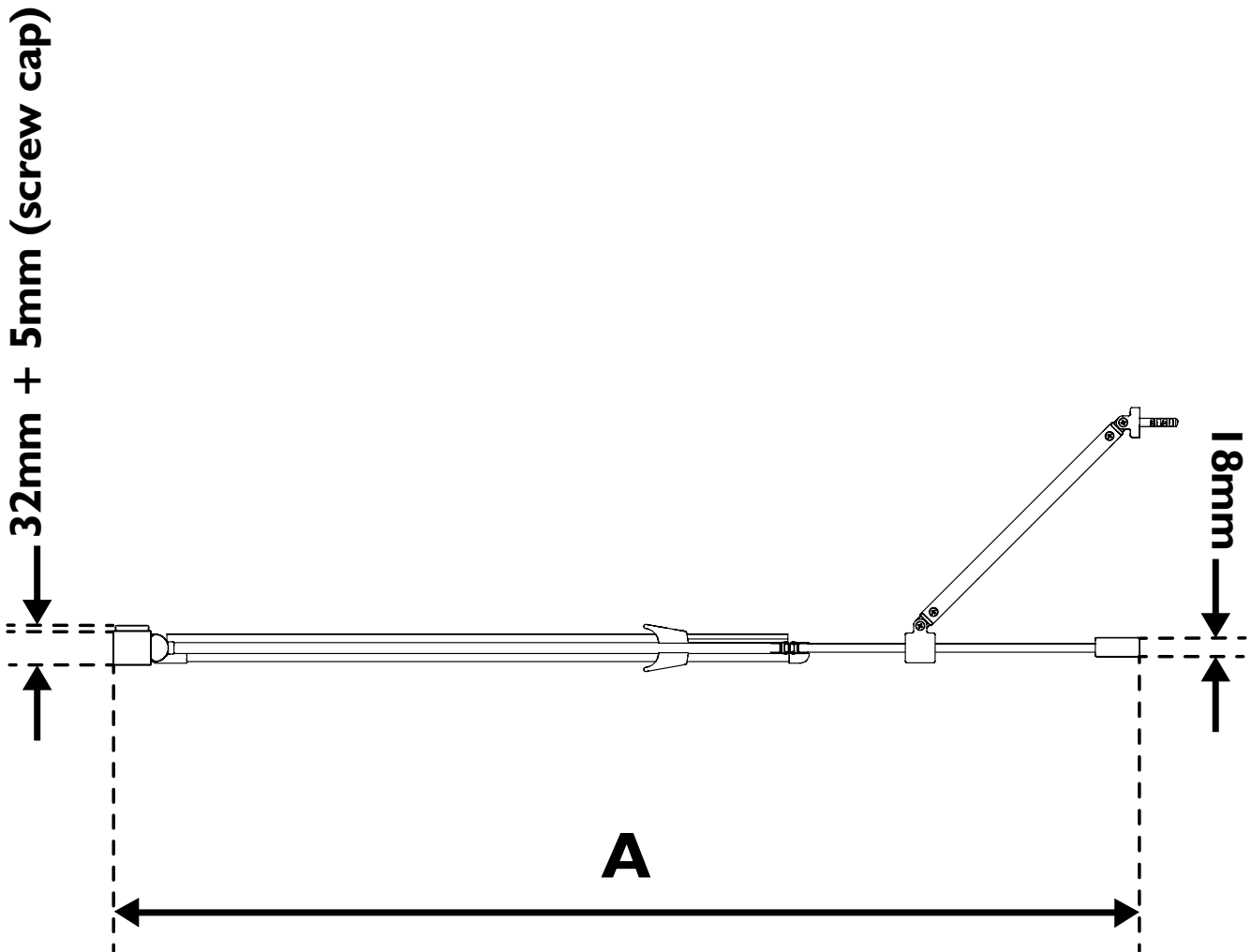
**THESE INSTRUCTIONS ARE TO BE LEFT WITH THE CONSUMER**



Product Sizes and Adjustments

PRODUCT	PACK CODES		DIMENSIONS (mm)
PIVOT	RECESS IN-LINE PANEL PACK	DOOR PACK	<b>A</b>
<b>800</b>	PEV6(C/BK)	PEVX(C/BK)	765 to 805
<b>900</b>	PEV7(C/BK)	PEVX(C/BK)	865 to 905
<b>1000</b>	PEV8(C/BK)	PEVX(C/BK)	965 to 1005
<b>1200</b>	PEV9(C/BK)	PEVX(C/BK)	1165 to 1205
<b>1400</b>	PEV10(C/BK)	PEVX(C/BK)	1365 to 1405

**ENCLOSURE HEIGHT = 2000mm**



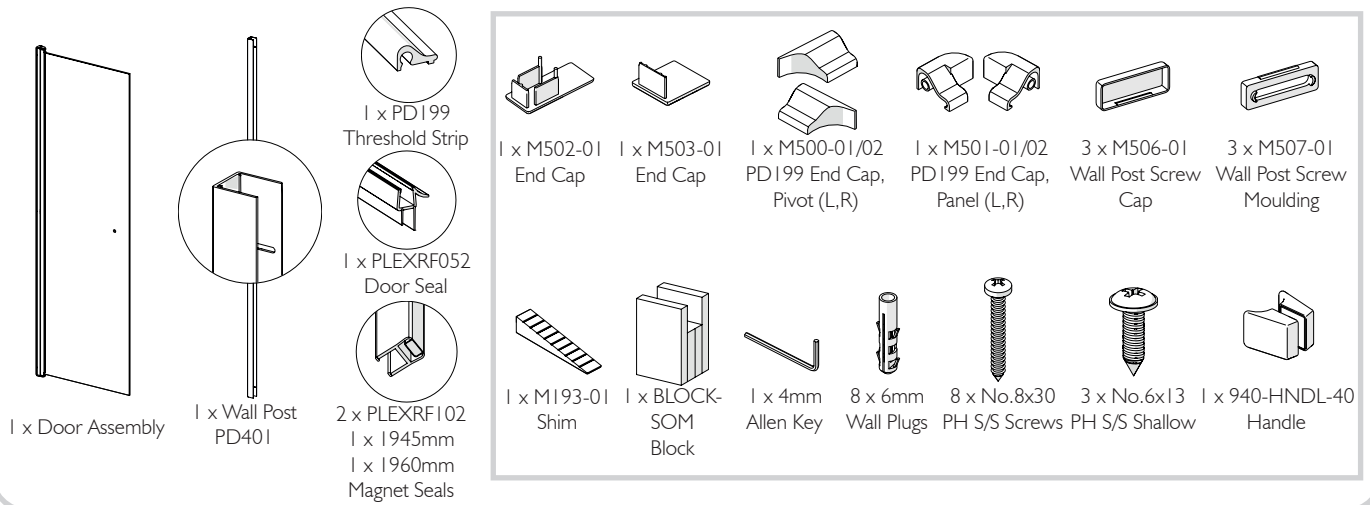
*Left Hand Configuration Shown*

## Important

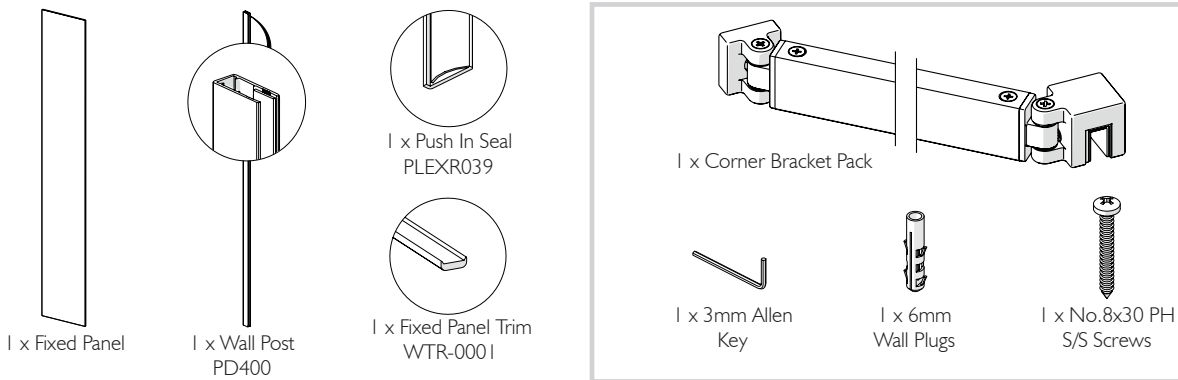
THIS INSTRUCTION IS TO INSTALL A RECESS OPTION ONLY. FOR A CORNER YOU WILL NEED TO PURCHASE A CORNER PACK.

### Parts List

#### Door Pack for Recess & Corner



#### Inline Panel for Recess

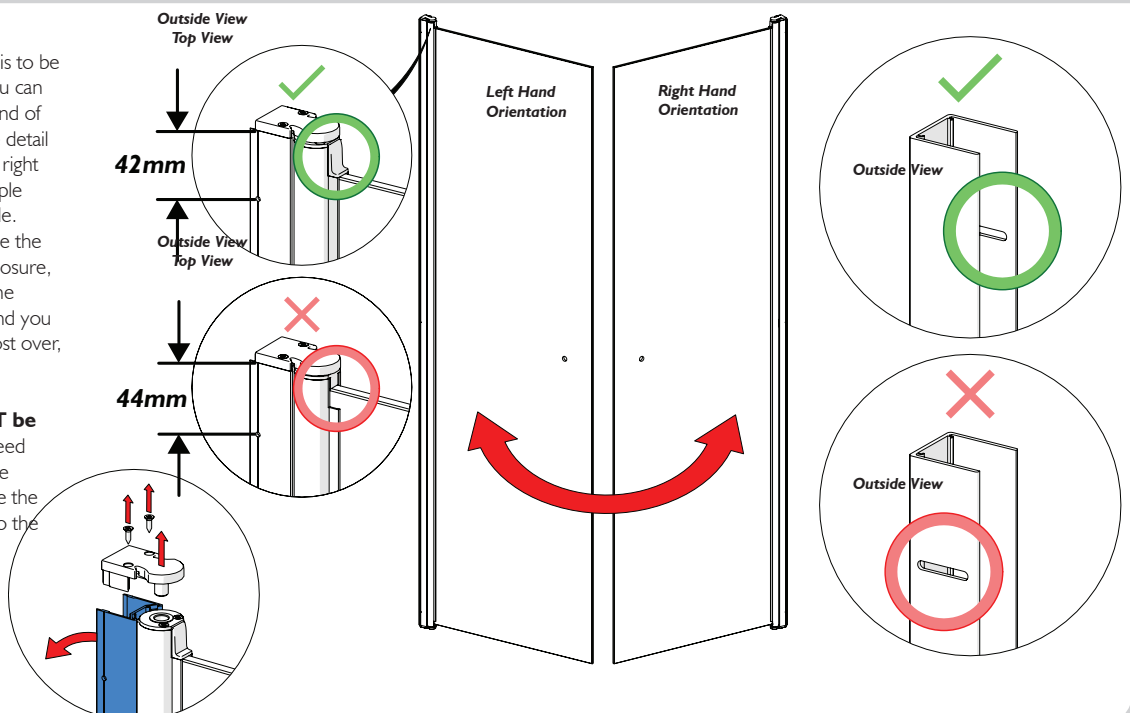


### Installation Steps

#### Step 1 - Decide Handing of Door

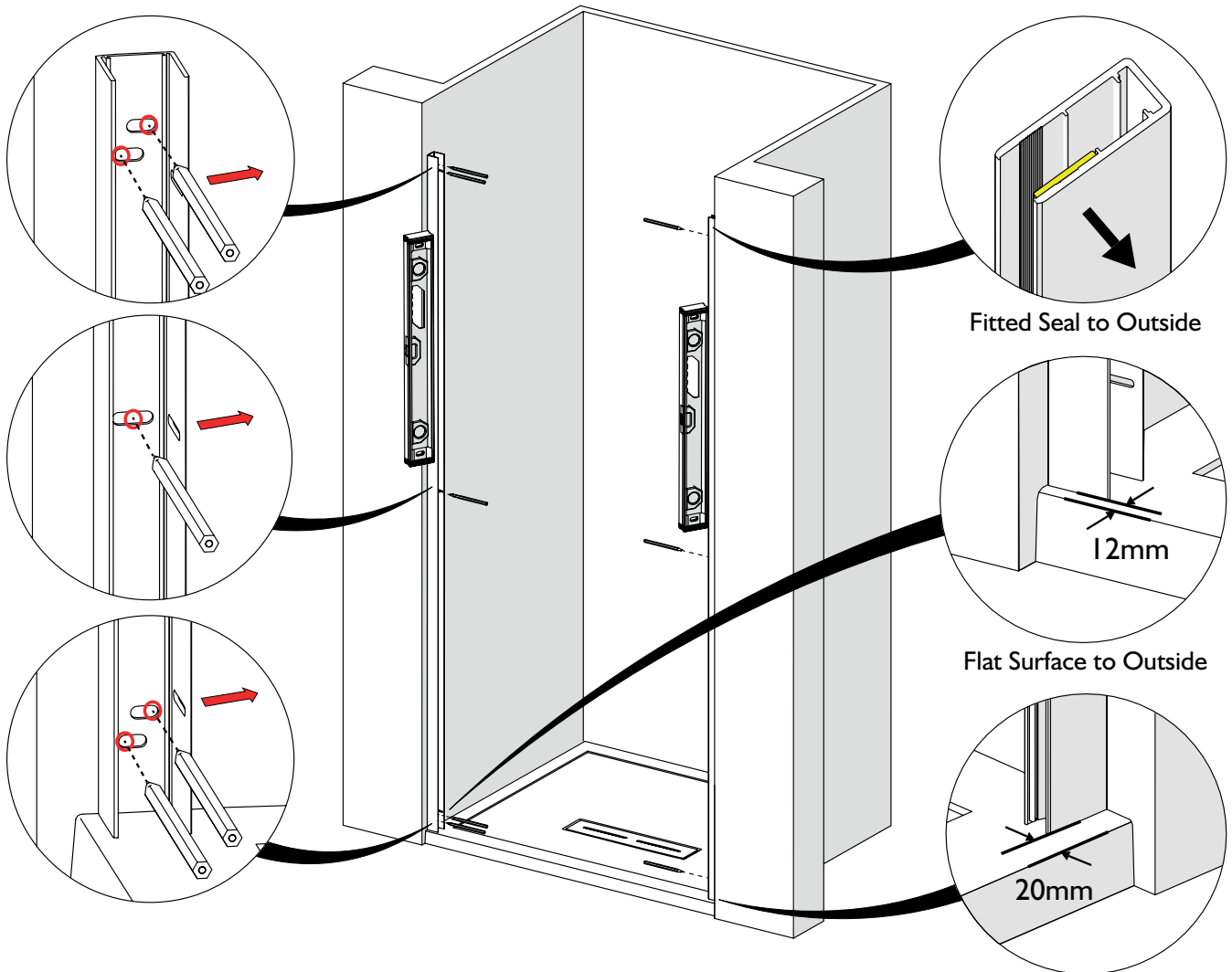
1. Determine whether door is to be left or right hand opening. You can determine which is the top end of the Door Assembly using the detail shown. To make left hand or right hand the Door assembly simple needs to be flipped to the side.
2. The wallpost needs to have the slots on the inside of the enclosure, as shown in detail. To make the wallpost left hand or right hand you simply need to flip the wallpost over, as shown.
3. Check the hole dimension distance at the top. **It MUST be 42mm.** If it's 44mm you'll need to remove the top cast via the two CSK screws. Then rotate the extrusion (highlighted blue) so the hole that is 42mm from the edge is at the top.

Detail shown for a left hand configuration.



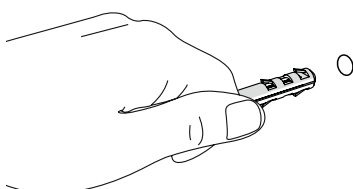
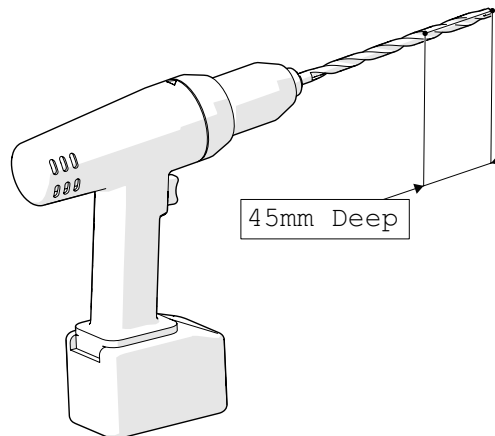
## Step 2 - Position and Mark Wallposts

1. Position wallpost for door (with side slots to inside) 12mm in from front edge of tray, as shown below. Using spirit level to ensure wallpost is vertical, mark through the 5 slots onto the wall surface as shown and remove wallpost. Important to mark the holes as indicated in red below, to the ends of the slots.
2. Position in-line panel wallpost (with fitted seal to outside) 20mm in from front edge of tray, as shown below. Using spirit level to ensure wallpost is vertical, mark through the 3 slotted holes onto the wall surface and remove wallpost.



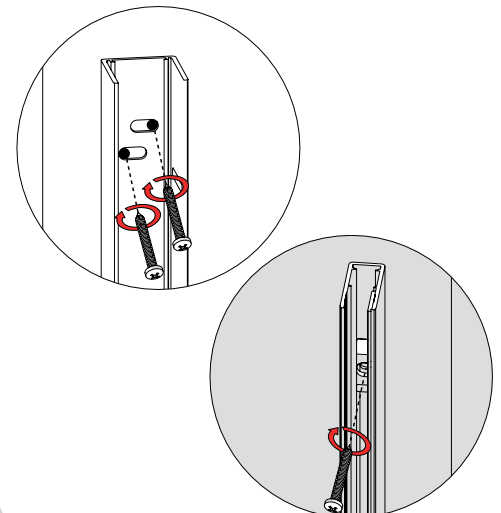
## Step 3 - Drill Mounting Holes

1. Remove the wallposts. Placing safely off to one-side.
2. Using a 7mm masonry drill bit and drill (or appropriate drill bit if drilling tiles), drill five holes for the door wallpost and three holes for the in-line panel wallpost using the 'spot' marks from step 2, each hole should be 45mm in depth.
3. Insert the eight '6mm Wall Plugs' into the six holes.



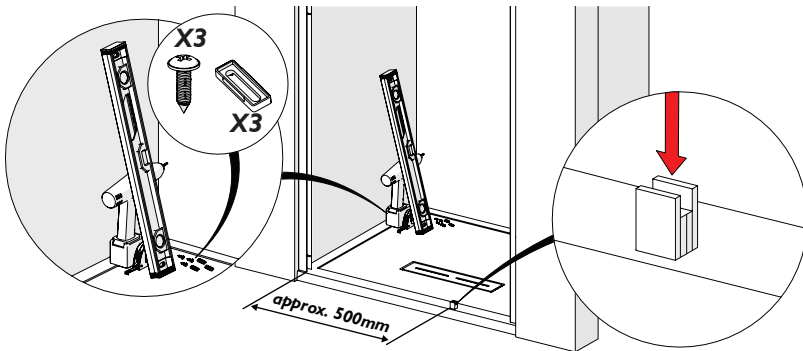
## Step 4 - Fix wallposts

1. Fix wallposts using 8 x No.8x30 PH S/S Screws provided. Tighten all screws using pozi-head screwdriver, ensuring the wallpost is vertical.



### Step 5 - Preparation To Install Door Assembly

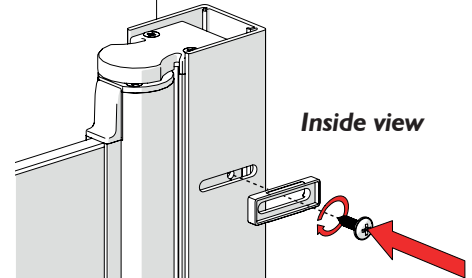
1. Place your drill, spirit level, tape measure, 3 x No.6x13 PH S/S Shallow and 3 x M507-01 (from the Door Installation Pack) inside the enclosure in the corner as shown. **Ensure the tray is adequately protected beforehand.**
2. Acquire 'BLOCK' (BLOCK-SOM) from the Door Installation Pack and place as shown roughly 500mm from the Door Wallpost.



### Step 7 - Fix Door Assembly

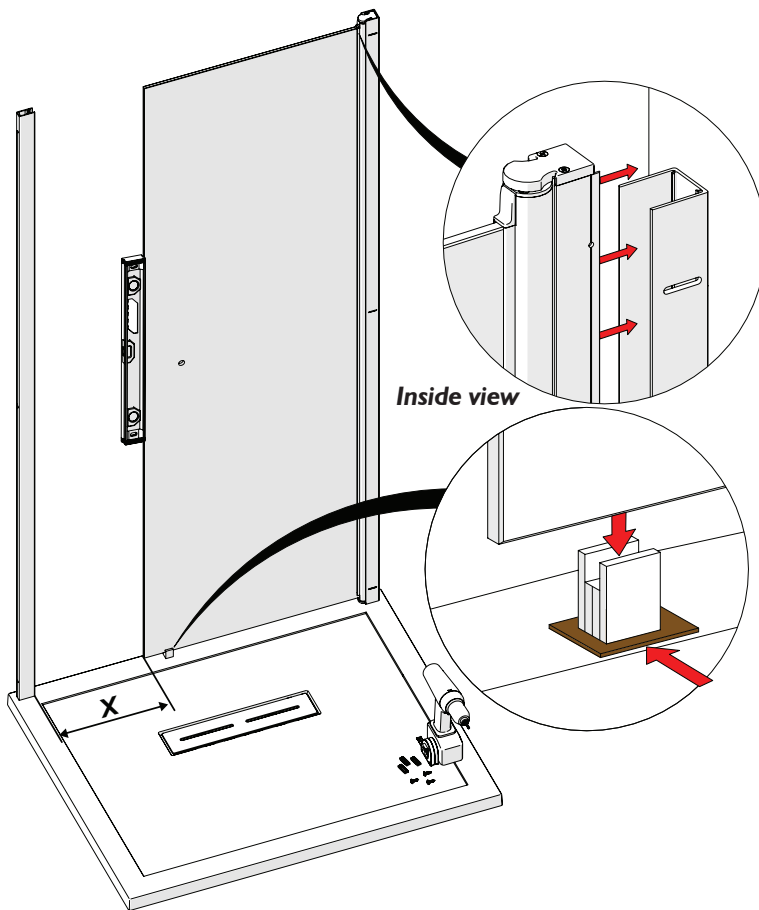
1. Take the three 'Wallpost Screw Mouldings' from the Door Installation Pack and place them into the slots on the Door Wallpost from the inside of the enclosure, as shown.
2. Fix the door Assembly in position using the 3 x No.6x13 PH S/S Shallow, as shown.

*Note: if you find the brush seal isn't in contact with the pivot barrel simply loosen the middle screw and level outwards the inner profile until the brush seal makes contact with the barrel. Retighten screw.*



### Step 6 - Position Door Assembly

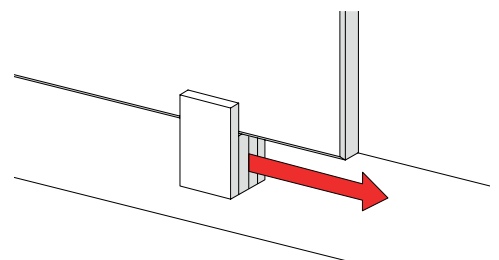
1. Carefully fit Door Glass Assembly into wallpost. Slot the glass into the 'BLOCK' already positioned, as shown. This will take the weight of the door. **Use your level to make sure the door edge is 'plumb' vertical. If not 'plumb' vertical use additional packing (e.g cardboard) to raise the 'Packer', as shown.**
2. Position vertical edge of the Door Glass 'X' mm to the In-Line Panel wallpost, as shown - refer to table to the right.



Door Size (nominal)	'X' Dimension
800	98-138
900	198-238
1000	298-338
1200	498-538
1400	698-738

### Step 8 - Remove Door 'BLOCK'

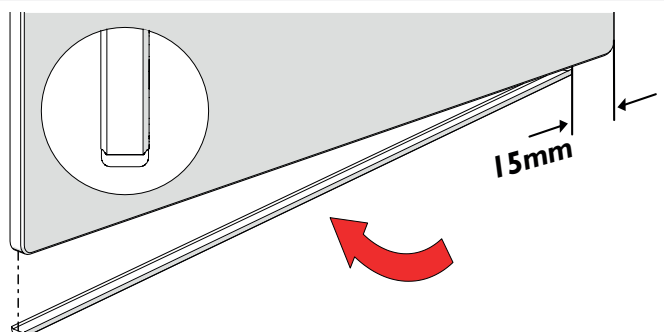
1. Remove 'BLOCK' from under the Door Glass by sliding out, as shown below. **Do not discard.**



### Step 9 - Fit Bottom Trim To In-Line Panel

1. Take note of label **'This surface to outside'** this will determine which is the bottom edge of your installation.
2. Clean glass edge, then make sure it's completely dry.
3. Acquire the WTR-0001 Trim. Peel off a small length of the bottom trim adhesive tape and apply to bottom of glass panel 15mm from the end that will be going into the wallpost, as shown. Make sure no 'dirt' gets on the adhesive strip. Continue along length of trim, peeling away the tape as you go, until the full trim length is adhered to the panel.

Use small upturned edges on bottom trim against chamfered glass edges to ensure trim is fitted centrally.

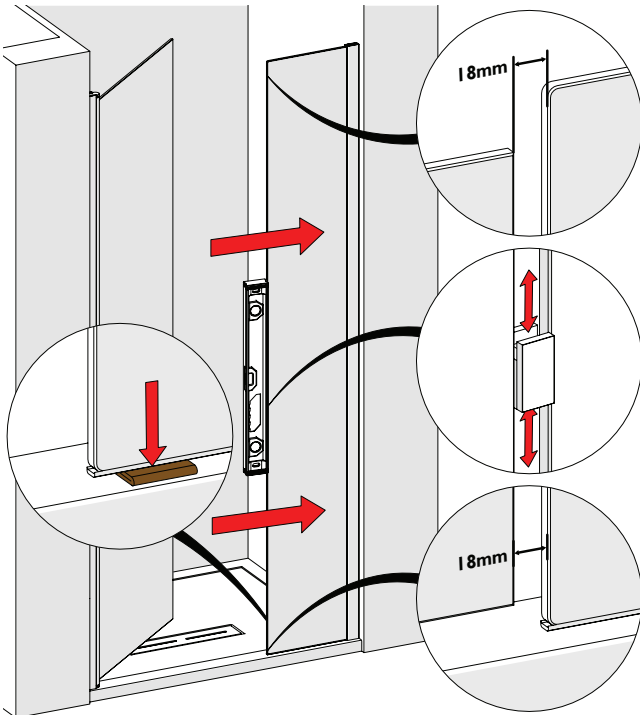


### Step 10 - Insert In-line Panel

1. Carefully fit glass panel into slot in wallpost, ensuring panel is parallel to tray edge. **Ensure factory drawn lines on side panel glass do not extend beyond front face of wallpost.** Ensure outer edge of in-line panel is plumb vertical, as shown, using spirit level.

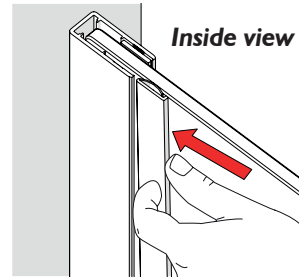
2. Acquire the 'BLOCK' previously removed in step 8. Insert between glass door and in-line panels to ensure there is an adequate gap between the two (18mm), as shown. 'BLOCK' needs to be able to freely move up and down inbetween the two glass panels. If the gap needs to be adjusted, simply adjust the inline panel distance into the wallpost or the door position by adjusting the screws, see step 7. Remove 'packer' when satisfied.

3. Often shower trays have different angled top faces. In order to keep the fixed panel supported use adequate 'packing' (eg cardboard). **Make sure the panel is 'plumb' vertical.**



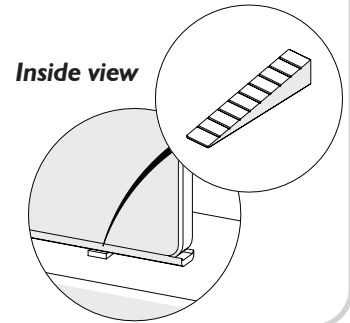
### Step 11 - Insert Push-In Seal

1. Take 'Push-In Seal (PLEXR-039),' Insert the seal to the inside of the enclosure, between the side glass panel and lip of the metal on post, ensuring the curved surface is contacting the glass. Start at the top and work downward, until the seal is fully inserted all the way down the panel, if tight, lubricate the seal with water.



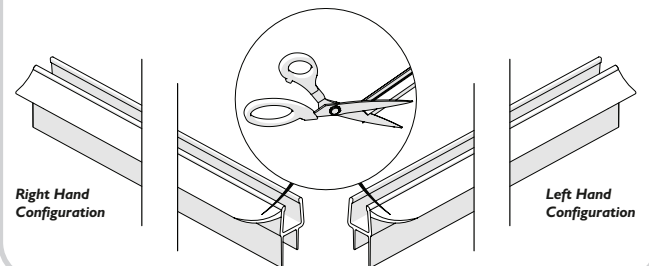
### Step 12 - Insert Push-In Seal

1. The weight of the panel is now taken by the Push-In seal applied in the last step. Remove the 'packing' under the panel. **On the inside** of the enclosure measure the gap between the bottom of the glass and top of the tray, select the height required from the shim strip supplied, break off and insert under rail. The shim will be concealed by silicone sealant later.



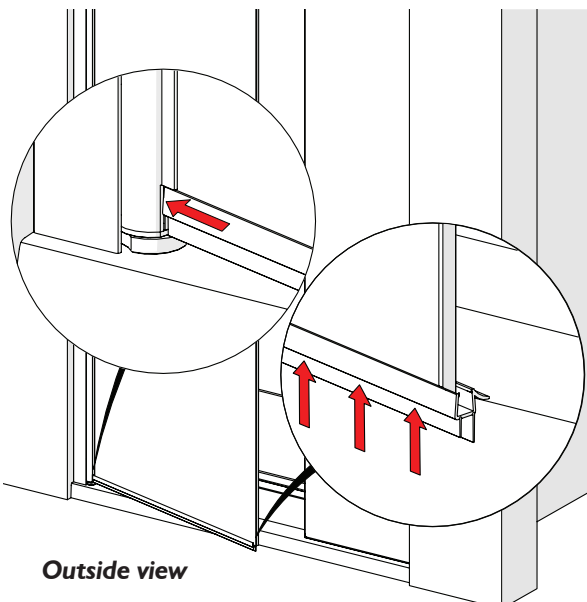
### Step 13 - Prepare Door Seal PLEXRF-052

1. Acquire PLEXRF052 from the Door Pack. Cut the corner of the rigid flipper at 45 degree angle, as shown below. Cut the end depending on your opening. The none cut side is to go up against the pivot barrel for reference. Using adequate scissors. **Make sure the end that's cut has no sharp edge, cut a smooth curve.**



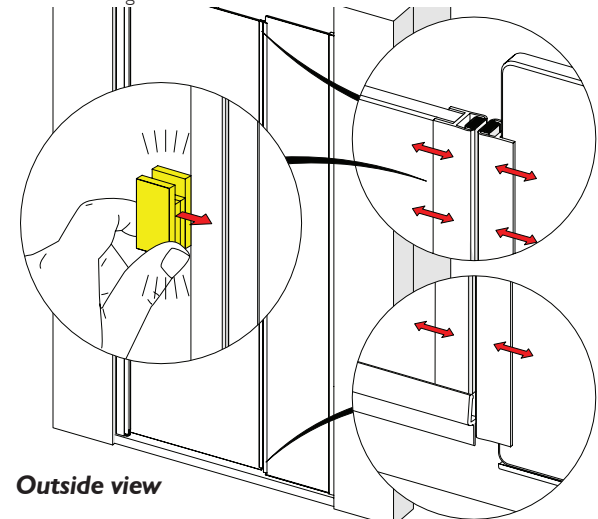
### Step 14 - Add Door Seal PLEXRF-052

1. Add the prepared Door Seal PLEXRF-052 to the bottom edge of the Door. Orientation as shown, with the water ramp on the inside of the enclosure. Make sure the seal runs right up to the Pivot Barrel. The seal will overhang the end of the door glass, as shown.



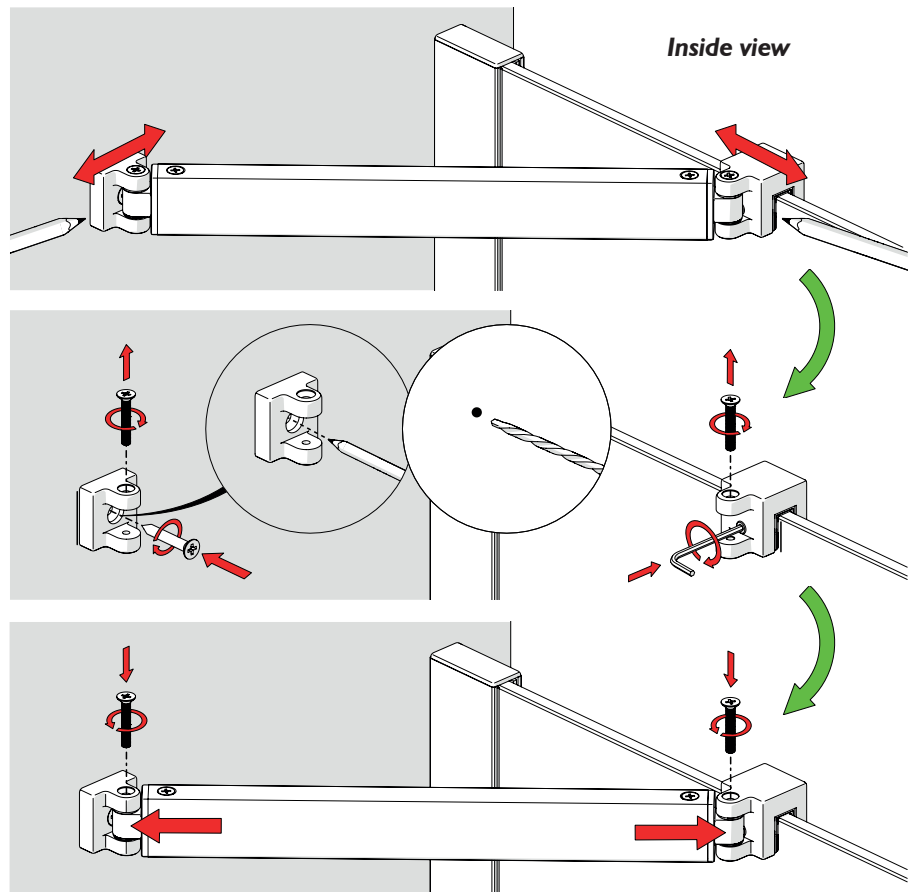
### Step 15 - Add Magentic Seals

1. Acquire 2 X PLEXRF-102 magnet seals from pack. Add shorter length (1945mm) to the door glass and longer length (1960m) to the fixed panel glass, as shown below. **Magnet seals should attract and sit flush together. If not, you'll need to rotate one of the seals 180 degrees.** Adjust the seals like the arrows shown below to set the magnet strength to your preference. Use the previously used 'BLOCK' (highlighted yellow) to adjust the seal by tapping the edge of the seals on the glass.



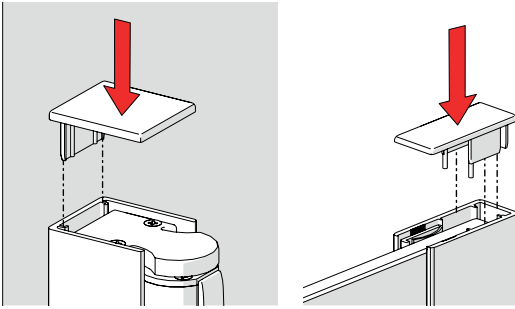
### Step 16 - Add Corner Bracket

1. Fit glass clamp of stabiliser arm over top of glass panel.
2. Position stabiliser bar to required position on glass panel and to wall, as shown in first image.
3. Ensuring bar is horizontal, mark positions of glass clamp onto glass panel and wall bracket onto wall. Remove support bar, as shown in first image.
4. Release wall bracket from bar by removing the M4X25mm long csk screw as shown in second image. Position bracket to marks made on wall and mark through central hole onto wall.
5. Using 6mm drill bit, drill hole in wall and fit rawlplug supplied. Fix wall bracket into position using the no. 10x32mm long csk screw supplied, ensuring csk hole in bracket is to top.
6. Release glass clamp from bar by removing the M4X25mm long screw, as shown. Position glass clamp to marks made on glass panel and secure in place by tightening the grub screw using 3mm allen key supplied.
7. Refit bar to wall bracket and glass clamp using screws previously removed.



### Step 17 - Insert Wallpost End Caps

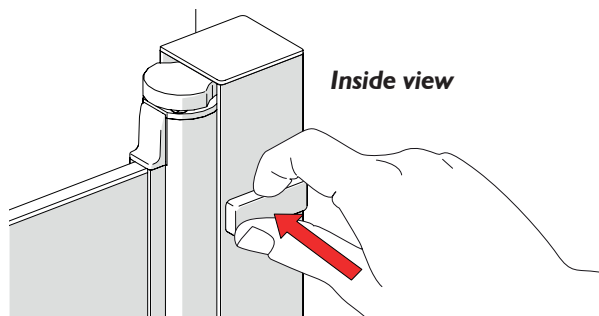
1. Add the End Caps (M503-01 & M502-01) to the Wallposts as shown below.



### Step 19 - Insert Screw Mouldings

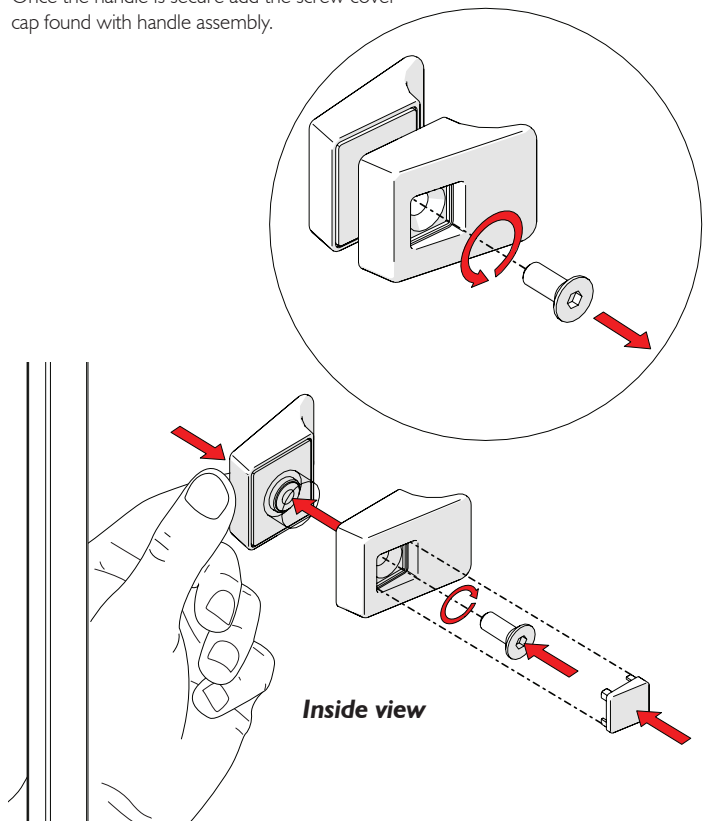
1. Take the three 'Wall Post Screw Caps' from the Door Installation Pack and place over the 'Wallpost Screw Mouldings' previously fitted in step 7. The 'Wall Post Screw Caps' can be easily removed if you ever need to make an adjustment of the Door position.

**The screw caps may be fitted after step 21 to make silicone process easier.**



### Step 18 - Fit Handle

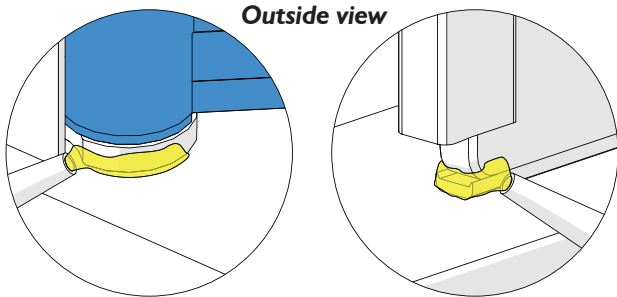
1. Acquire the Handle (940-HNDL-40) out of the Door Installation Pack. Separate the handle halves by removing the screw, using 4mm allen key provided. Add the handle to the door glass using the screw previously removed, as shown below. Make sure screw is facing the inside of the enclosure. Once the handle is secure add the screw cover cap found with handle assembly.



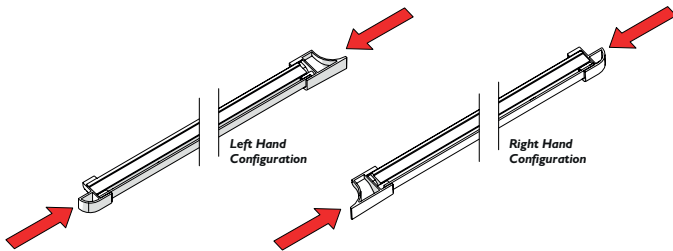
## Step 20 - Silicone and Apply Water Threshold Strip

**Before carrying out these last steps make sure you are happy with the door function. Won't be able to adjust after silicone is applied.**

1. Apply a small bead of silicone to the Fixed Panel bottom edge and the Pivot Base Cast, as shown and highlighted yellow below. This is where the threshold strip end caps are going to fit. Make sure silicone doesn't come into contact with the Pivot Door Barrel, highlighted blue below.

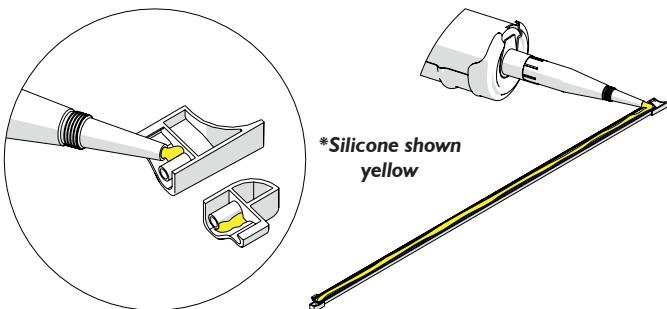


2. Configure the Threshold Strip (PD199) in either the Left or Right Configuration depending on the handing of your door.

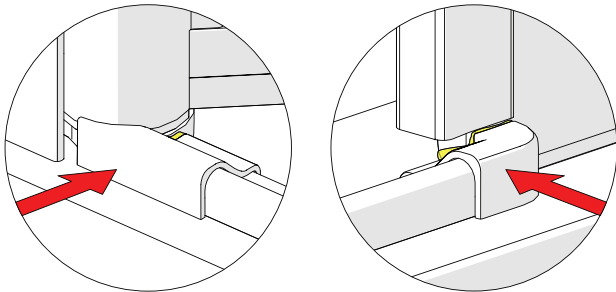


3. Silicone the end caps being used. Silicone a 'pea' sized amount, as shown.

4. Insert the end caps to the Threshold Extrusion ends and silicone the underside of the threshold strip, as shown. Use a thin small amount of silicone.



5. Carefully add the siliconed strip into position, as shown. Make sure the end caps touch up to the inline panel and the Door Pivot Barrel.



## Step 22 - Wait 24hr

1. Allow 24 hours before using the shower.



## Step 21 - Silicone

1. On the outside, silicone around all three junctions with the wall and tray, and also on the wallposts where the sill meets the uprights. On the inside, only silicone along the two vertical junctions with the wall. **Do not silicone seal on the inside of unit (except where shown).** Sealing the wall posts to the tray on the inside can result in leakage problems - please note that, in use, water can penetrate into the extrusions - this has no detrimental effect to the product- however, this water must be allowed to drain out of the extrusions to the inside.

Make sure silicone doesn't come into contact with the Pivot Door Barrel, highlighted blue below. As this is the mechanism by which the door pivots. Silicone the water threshold and end caps, as shown.

When installed correctly, Kudos guarantee the enclosure will not leak under normal showering use, ie. when the shower head is in it's normal showering position. N.B. - Using the shower head to clean/rinse down the enclosure does not constitute normal showering use.

